

Plan and Profile
showing the Relocation and Widening
of a portion of

WASHINGTON STREET, WELLESLEY

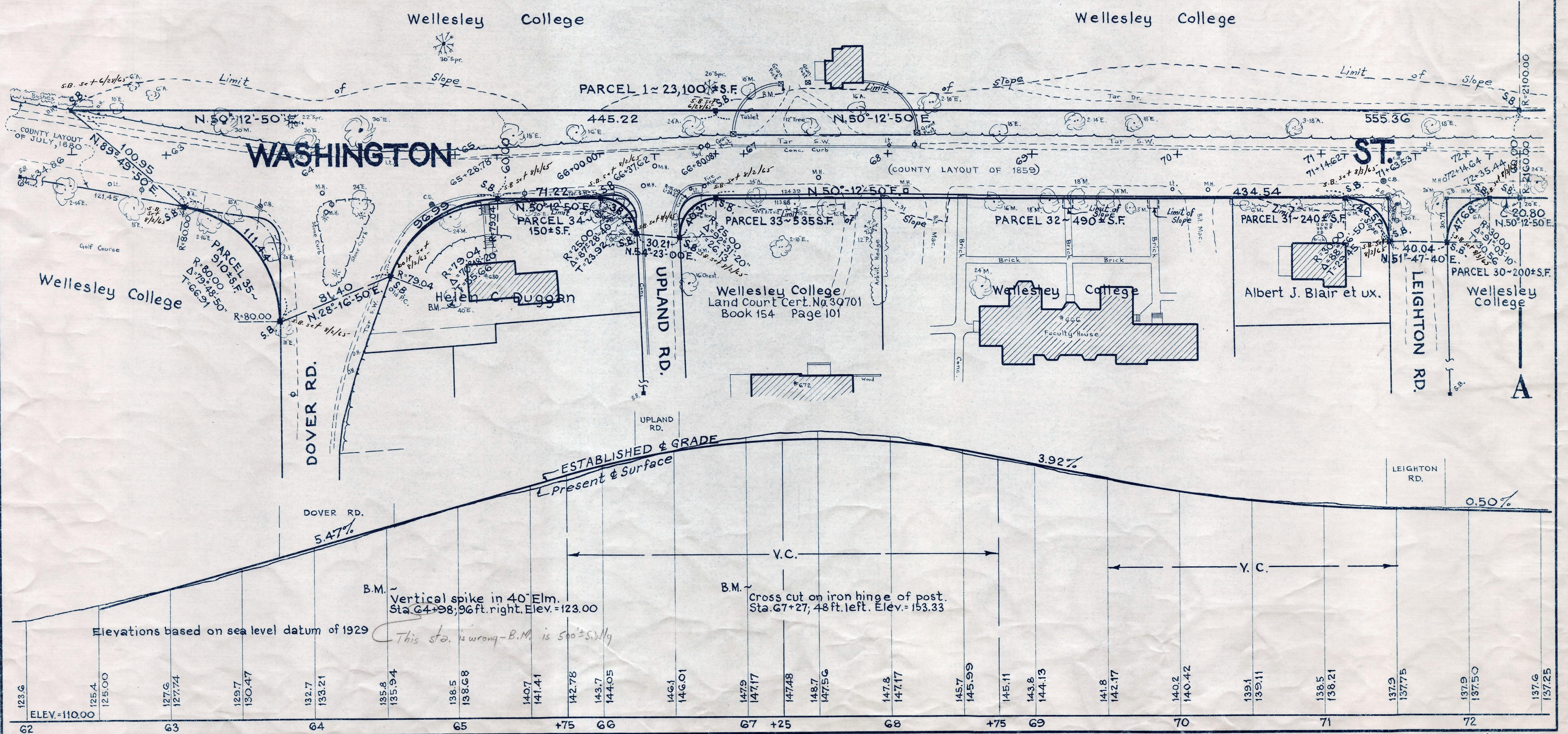
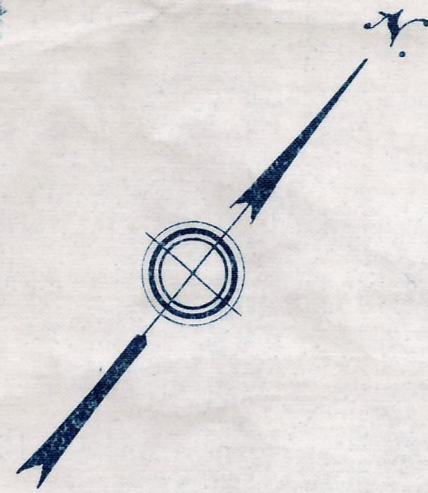
between
DOVER ROAD AND CHURCH STREET

as made by the Norfolk County Commissioners
by Return dated April 30, 1963

Horizontal Scale: 1 inch = 40 feet.
Vertical Scale: 1 inch = 8 feet.

Wallace S. Carson, County Engineer.

Russell J. Bates CHAIRMAN.



501-1

Date of Entry May 13, 1963

REC. IN REGISTRY 4069-301 ~ 5-8-63
PL. BK. 215 NO. 516-518 INCL.