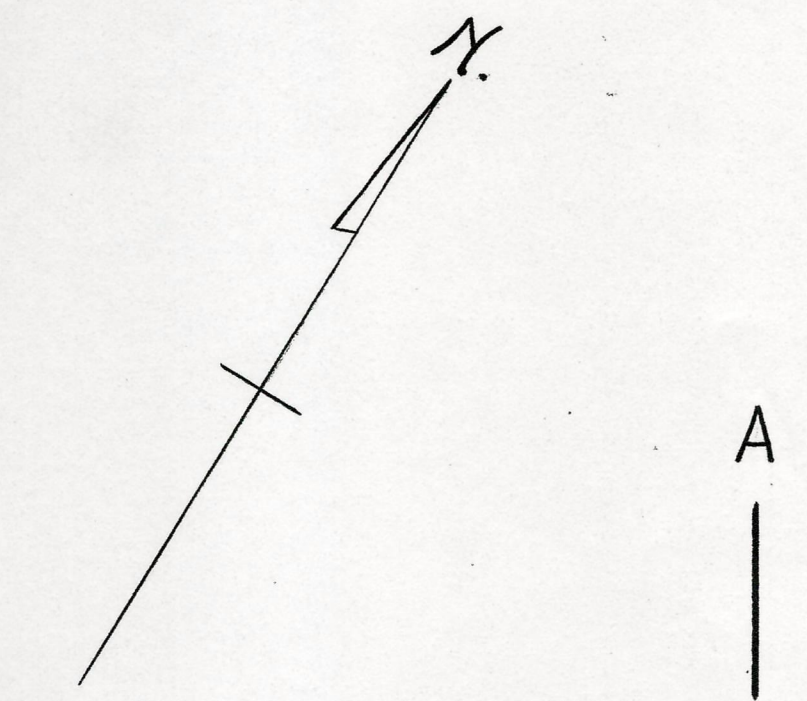
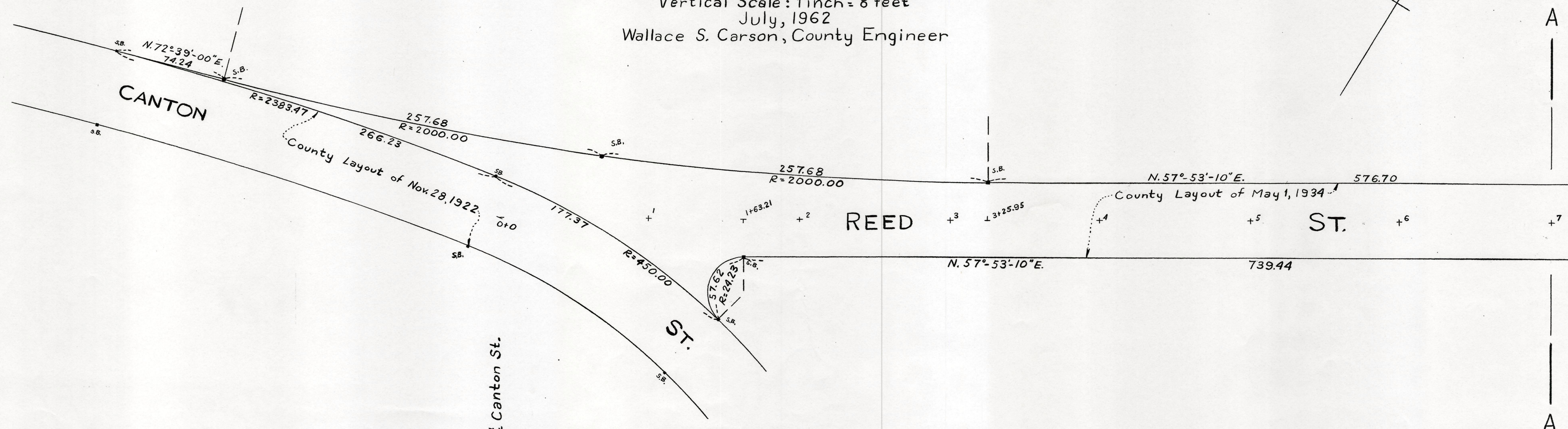
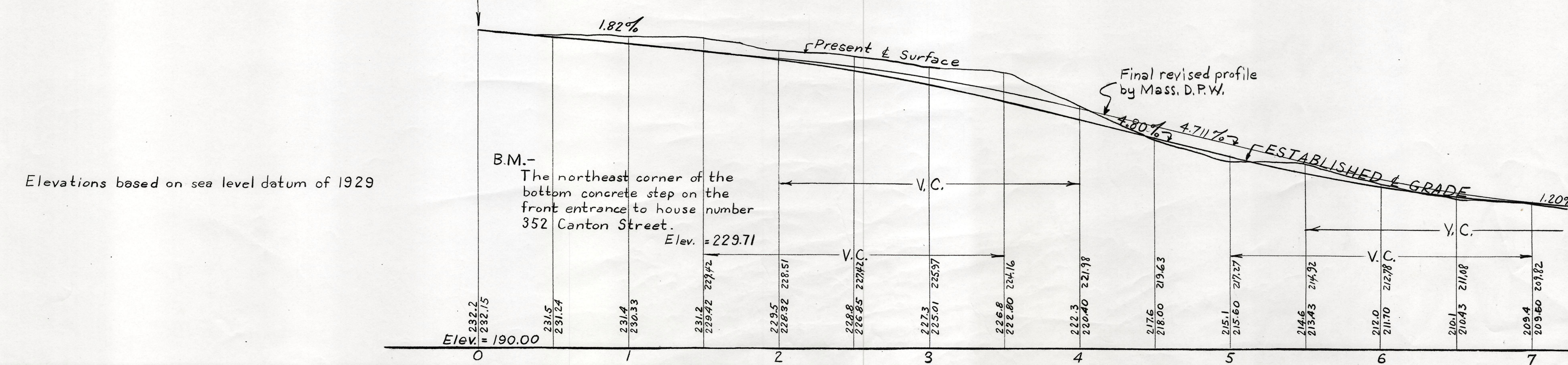


Plan and Profile
of
REED STREET, RANDOLPH
between
CANTON STREET AND NORTH MAIN STREET
Horizontal Scale: 1 inch = 40 feet
Vertical Scale: 1 inch = 8 feet
July, 1962
Wallace S. Carson, County Engineer



A
|
A



Elevations based on sea level datum of 1929

B.M.-
The northeast corner of the
bottom concrete step on the
front entrance to house number
352 Canton Street.
Elev. = 229.71

Final revised profile
by Mass. D.P.W.