

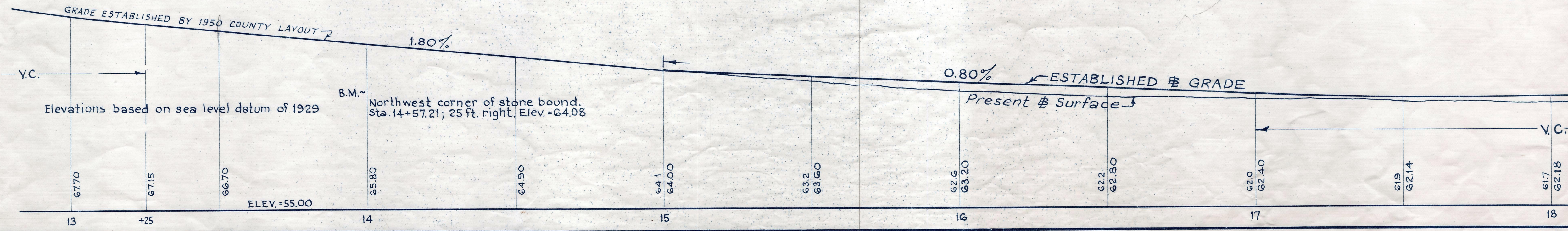
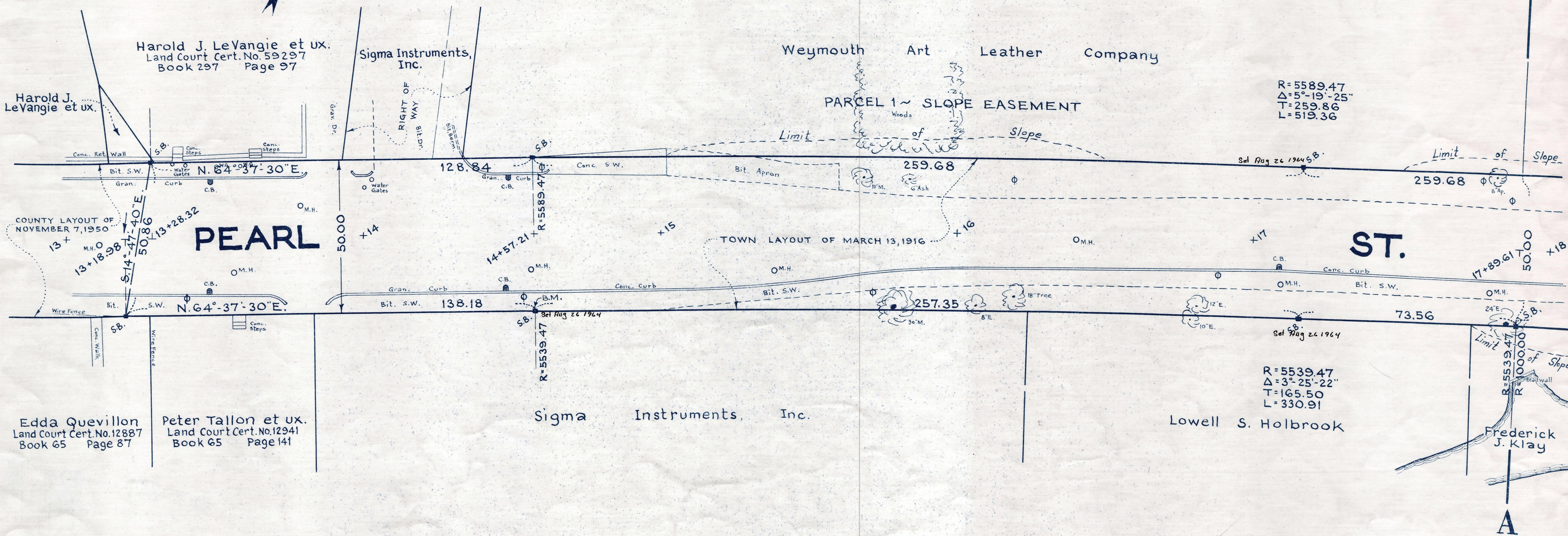
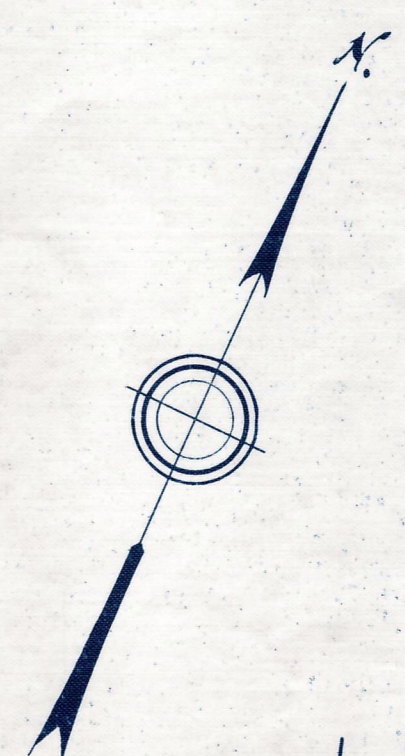
Plan and Profile
showing the Relocation and Widening
of a portion of
PEARL STREET, BRAINTREE

from
STATION 13+28.32 TO STATION 24+92.84
as made by the Norfolk County Commissioners
by Return dated July 24, 1962

Horizontal Scale: 1 inch=20 feet.
Vertical Scale: 1 inch=4 feet.

Wallace S. Carson, County Engineer.

Wallace S. Carson CHAIRMAN.



REC. IN REGISTRY BK 401-556 8-24-62
PL. BK. 213 NO. 867-869 INCL. of 62 Date of Entry Aug, 13 1962
Cert. of Entry 4011-556

492-1

EASE
FEE