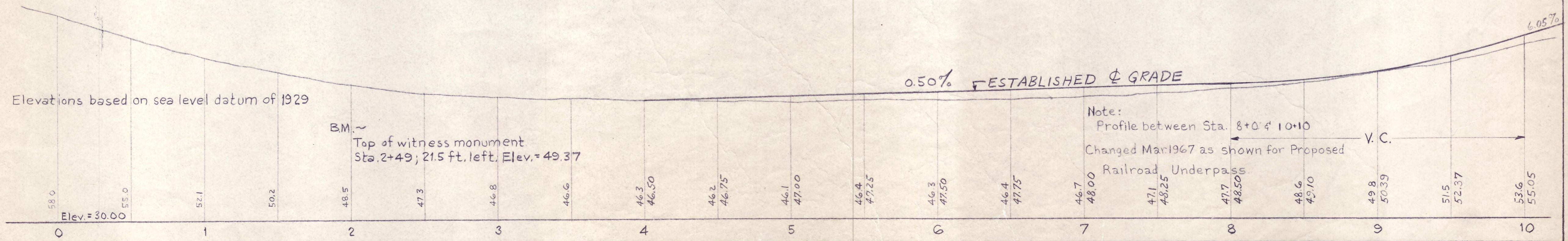
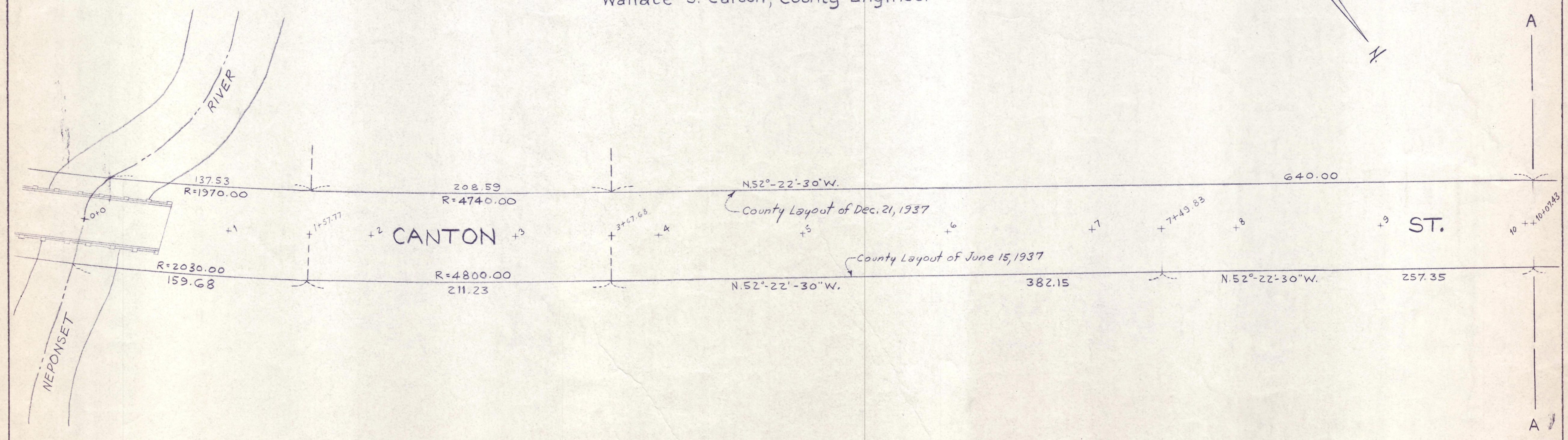
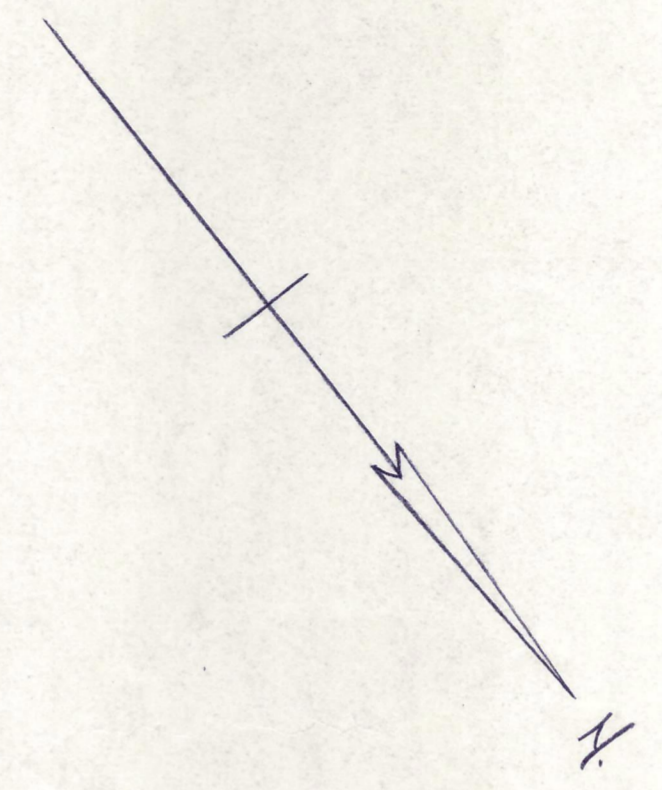


Plan and Profile
of a portion of
CANTON STREET, WESTWOOD
between
THE NEPONSET RIVER AND EVERETT STREET
Horizontal Scale: 1 inch=40 feet.
Vertical Scale: 1 inch=8 feet.
February 1962
Wallace S. Carson, County Engineer



Elevations based on sea level datum of 1929

BM ~
Top of witness monument
Sta. 2+49; 21.5 ft. left, Elev. = 49.37

Note:
Profile between Sta. 8+0 & 10+10
Changed Mar 1967 as shown for Proposed
Railroad Underpass