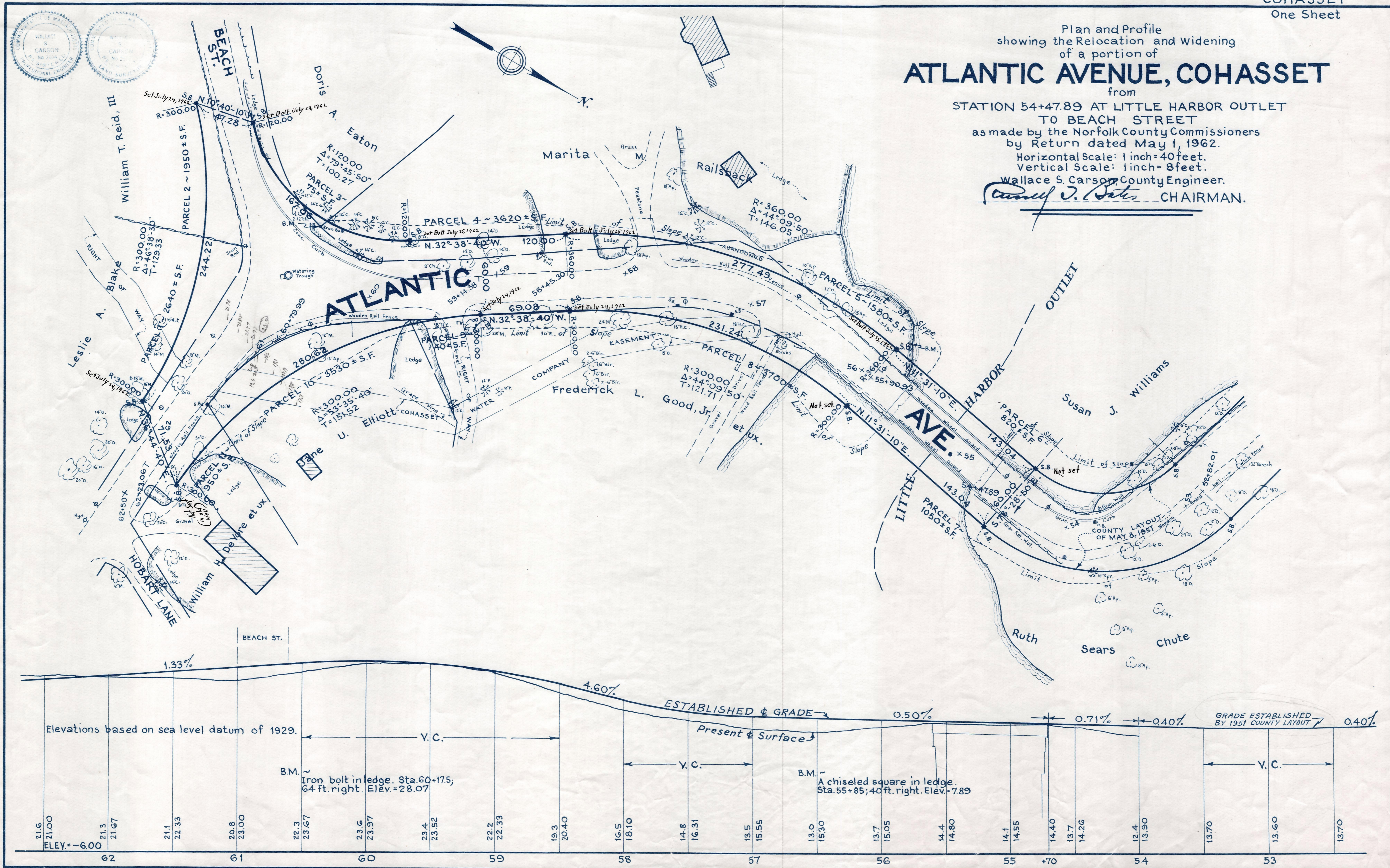


Plan and Profile
showing the Relocation and Widening
of a portion of
ATLANTIC AVENUE, COHASSET

from
STATION 54+47.89 AT LITTLE HARBOR OUTLET
TO BEACH STREET
as made by the Norfolk County Commissioners
by Return dated May 1, 1962.
Horizontal Scale: 1 inch=40 feet.
Vertical Scale: 1 inch=8 feet.
Wallace S. Carson, County Engineer.
Carroll J. Bates CHAIRMAN.



Rec. in Registry 5/14/62 3984-47 489 "FEE"
Plan Bk. 212 - No. 501
Entry Cert. Rec. 6/13/62 3991-435
Date of Entry June 5, 1962