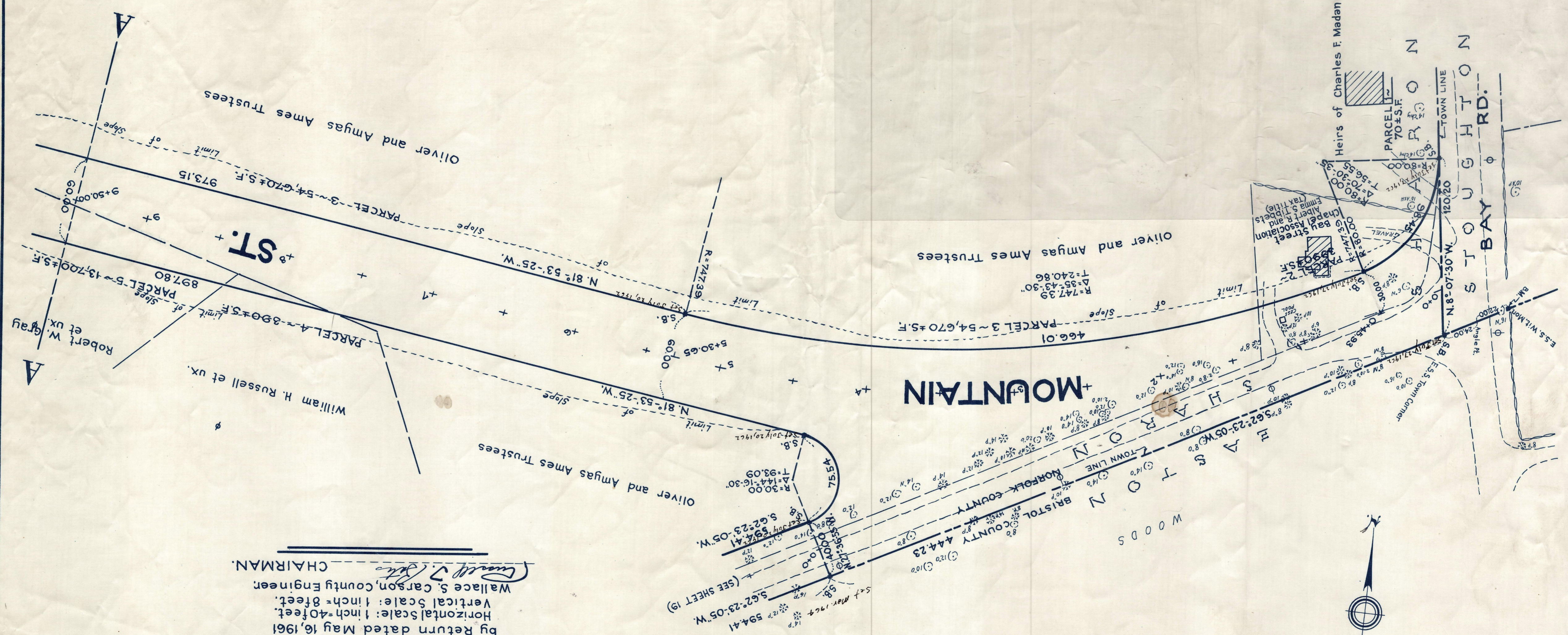


MOUNTAIN STREET, SHARON

from
BAY ROAD TO EAST STREET
as made by the Norfolk County Commissioners
by Return dated May 16, 1961
Horizontal scale: 1 inch = 40 feet.
Vertical scale: 1 inch = 8 feet.
Wallace S. Carson, County Engineer
CHAIRMAN.



Station	Elevation
0	246.0
1	247.9
2	247.8
3	244.6
4	244.1
5	247.9
6	249.4
7	247.3
8	242.4
9	246.2

B.M. ~ A chiseled square on top of Easton, Sharon, and Stoughton town corner witness monument. Elev. = 247.95
 Elevations based on sea level datum of 1929
 Present & surface
 ESTABLISHED & GRADE
 0.50%
 BAY RD. TOWN LINE
 TOWN LINE
 ELEV. = 230.00

594
1A 665
52 AAA
1038664