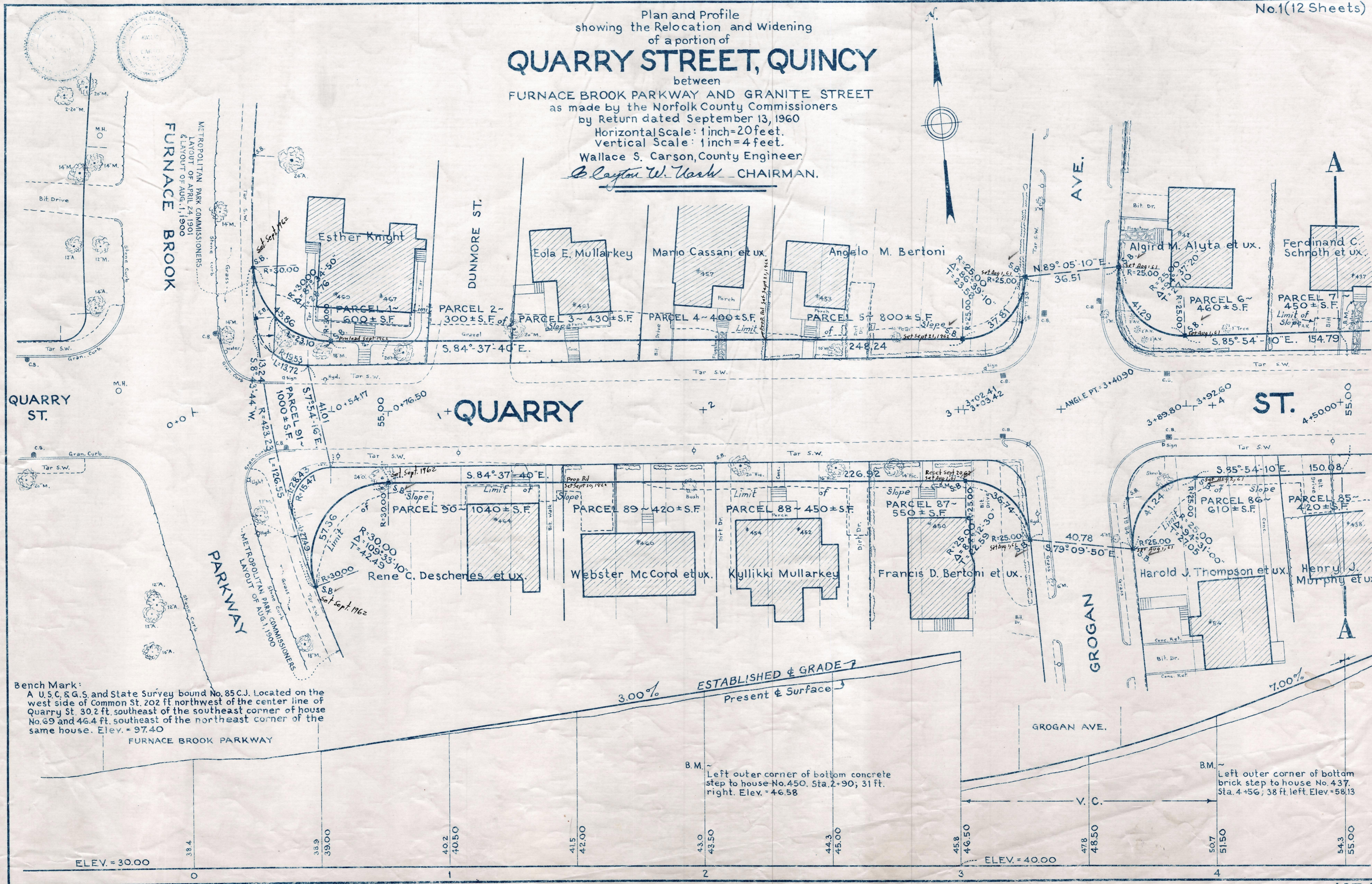
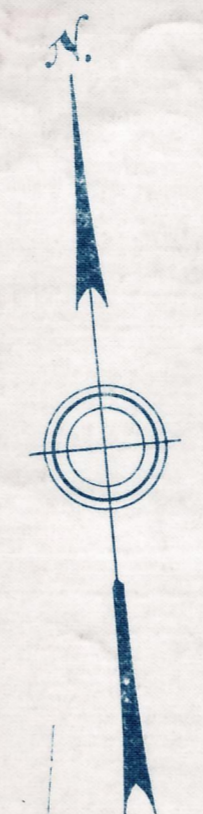


Plan and Profile  
showing the Relocation and Widening  
of a portion of  
**QUARRY STREET, QUINCY**

between  
FURNACE BROOK PARKWAY AND GRANITE STREET  
as made by the Norfolk County Commissioners  
by Return dated September 13, 1960  
Horizontal Scale: 1 inch=20 feet.  
Vertical Scale: 1 inch=4 feet.  
Wallace S. Carson, County Engineer.  
*Clayton W. Nash* CHAIRMAN.



Bench Mark:  
A U.S.C. & G.S. and State Survey bound No. 85C.J. Located on the west side of Common St. 202 ft. northwest of the center line of Quarry St. 30.2 ft. southeast of the southeast corner of house No. 69 and 46.4 ft. southeast of the northeast corner of the same house. Elev. = 97.40

B.M. ~  
Left outer corner of bottom concrete step to house No. 450. Sta. 2+90; 31 ft. right. Elev. = 46.58

B.M. ~  
Left outer corner of bottom brick step to house No. 437. Sta. 4+56; 38 ft. left. Elev. = 58.13