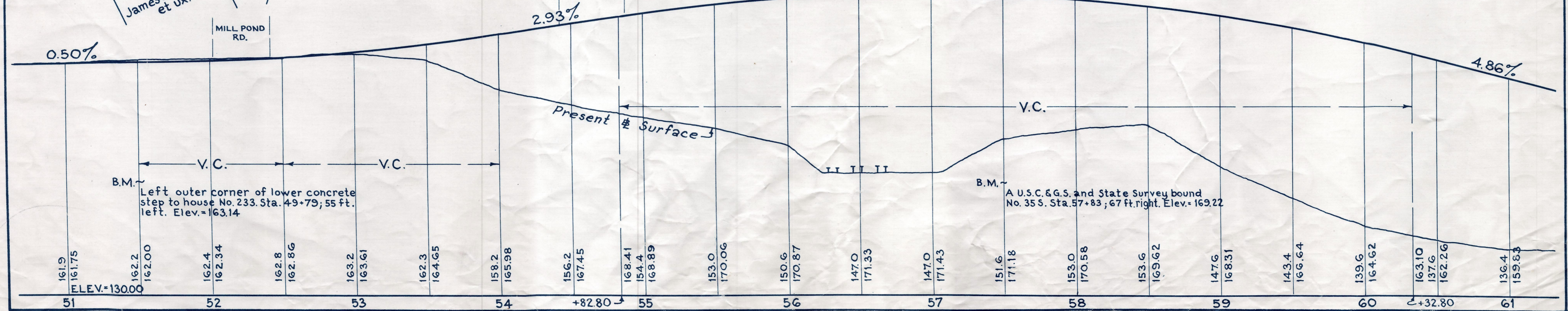
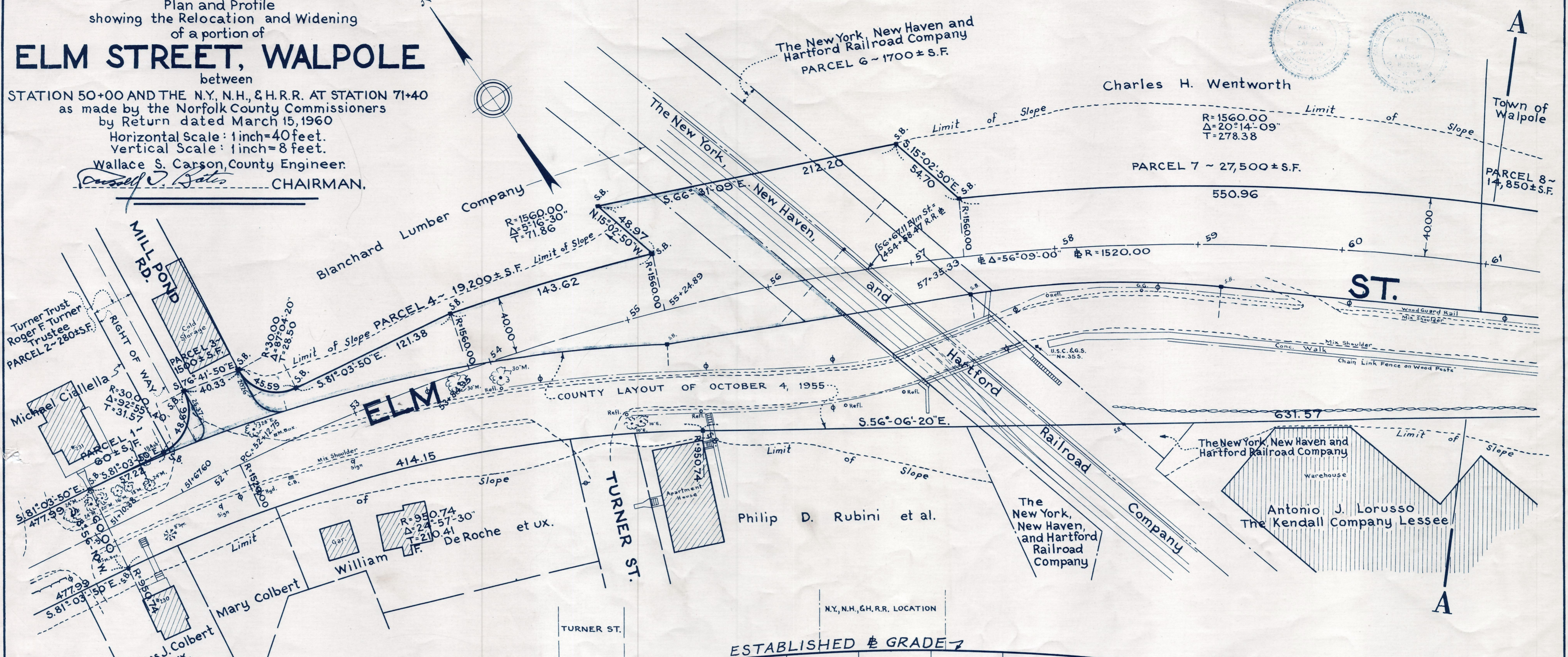


ELM STREET, WALPOLE

Plan and Profile
showing the Relocation and Widening
of a portion of
STATION 50+00 AND THE N.Y., N.H., & H.R.R. AT STATION 71+40
as made by the Norfolk County Commissioners
by Return dated March 15, 1960
Horizontal Scale: 1 inch=40 feet.
Vertical Scale: 1 inch=8 feet.
Wallace S. Carson, County Engineer.
Russell J. Gates CHAIRMAN.



COUNTY TAKING RECORDED BK 3804-575 (FEE TAKEN)
SEE STATE PLANS VOL. 24/1409 AND VOL. 26/1601
SEE ALSO REC. PLAN BK. 208, PLANS 343 & 344

(Layout Transferred to town - See State Hwy Vol. 26/19, 1601)

Date of Entry March 31, 1960