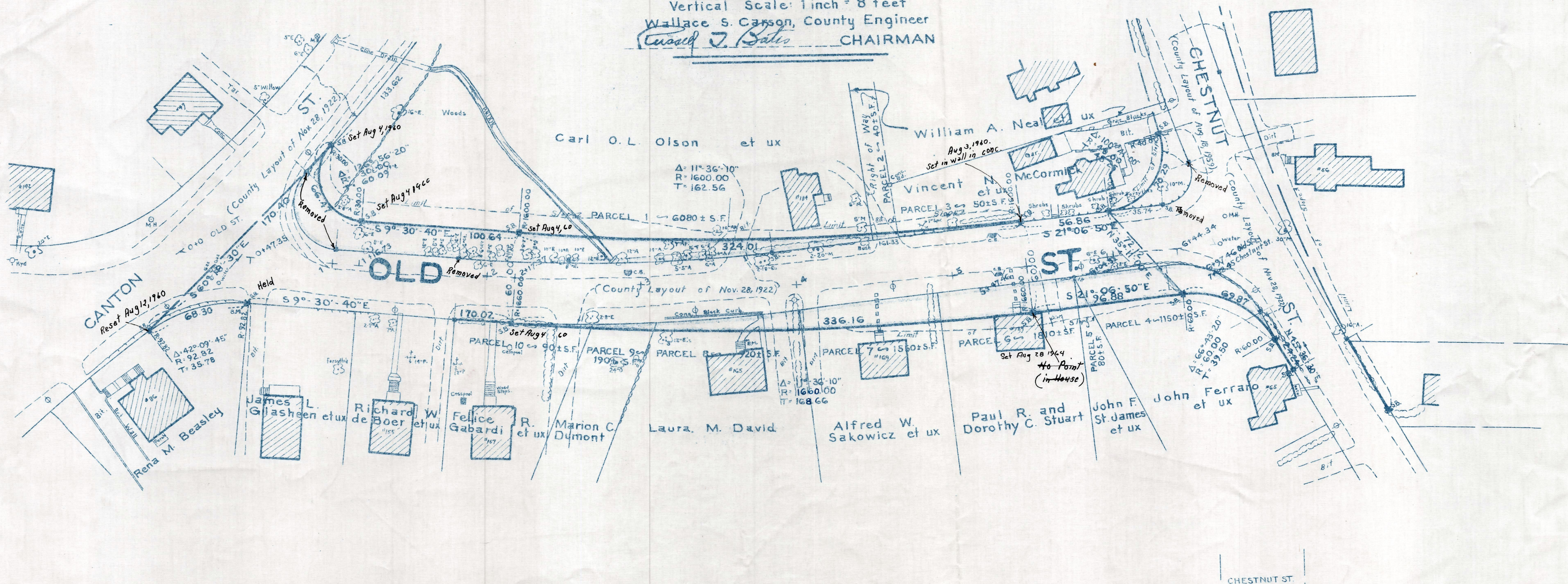
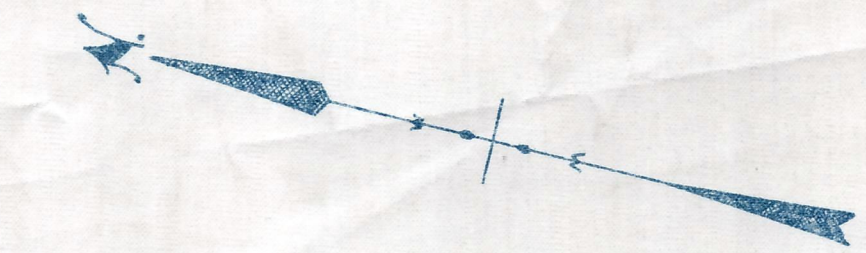


Plan and Profile  
showing the Relocation and Widening  
of a portion of  
**OLD STREET, RANDOLPH**

between  
CANTON STREET AND CHESTNUT STREET  
as made by the Norfolk County Commissioners  
by Return dated: August 18, 1959  
Horizontal Scale: 1 inch = 40 feet  
Vertical Scale: 1 inch = 8 feet  
Wallace S. Carson, County Engineer  
*W. J. Bates* CHAIRMAN



Bench Mark:  
A U.S.C. & G. Survey and State Survey  
Bound No. 57 F. located on the West  
side of North Main St. (Rte. No. 28) and  
the North side of Chestnut St.

