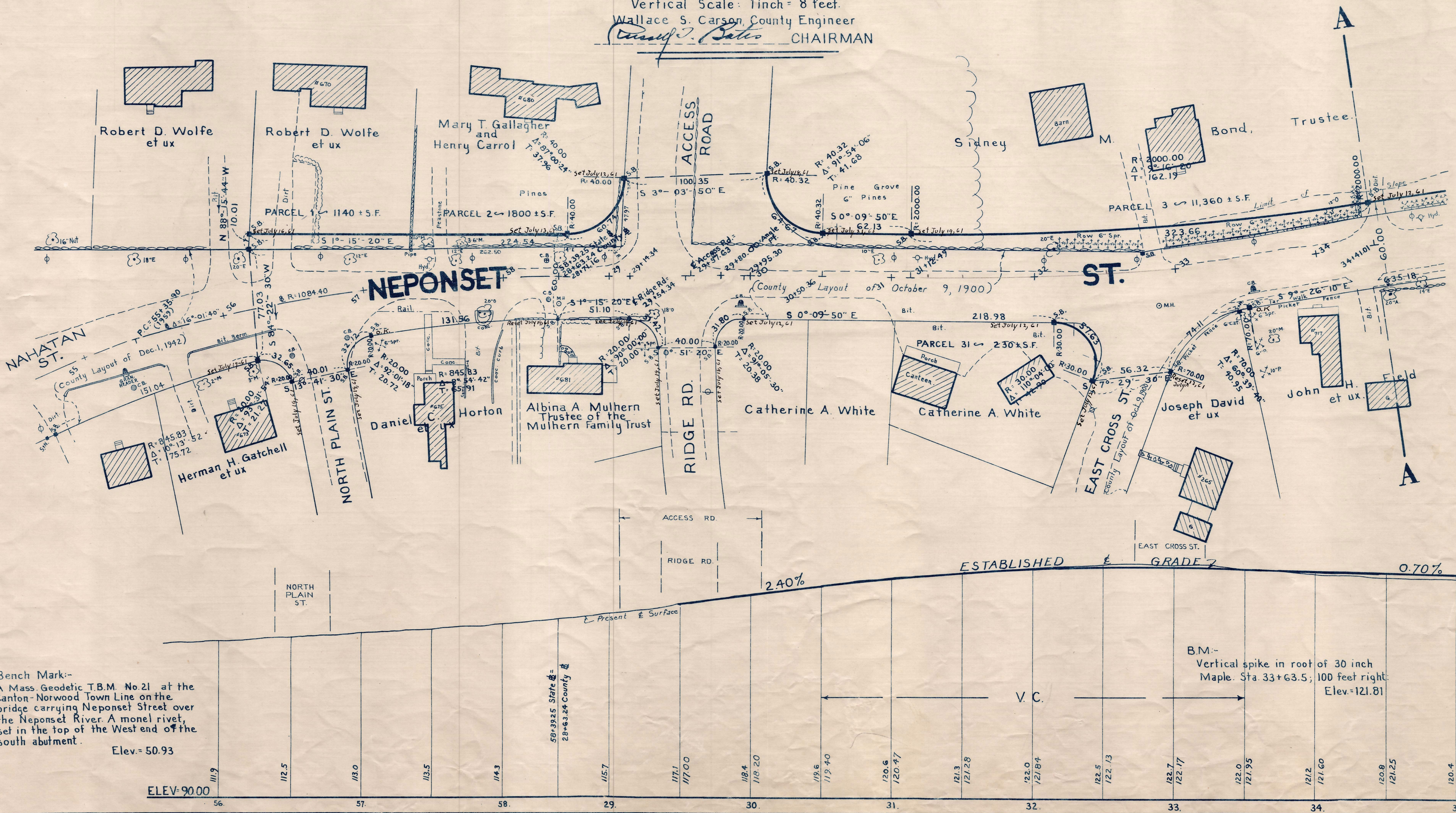
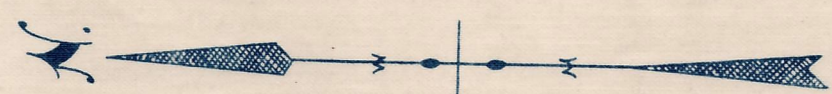


Plan and Profile showing the Relocation and Widening of a Portion of **NEPONSET STREET, NORWOOD**

between
NAHATAN STREET AND NORTON DRIVE
as made by the Norfolk County Commissioners
by Return dated: June 2, 1959

Horizontal Scale: 1 inch = 40 feet.
Vertical Scale: 1 inch = 8 feet.

Wallace S. Carson, County Engineer
Wallace S. Carson CHAIRMAN



Bench Mark:-
A Mass. Geodetic T.B.M. No. 21 at the
Canton-Norwood Town Line on the
bridge carrying Neponset Street over
the Neponset River. A metal rivet,
set in the top of the West end of the
south abutment.
Elev. = 50.93

B.M.:-
Vertical spike in root of 30 inch
Maple. Sta. 33+63.5; 100 feet right.
Elev. = 121.81

Date of Entry June 1, 1961