

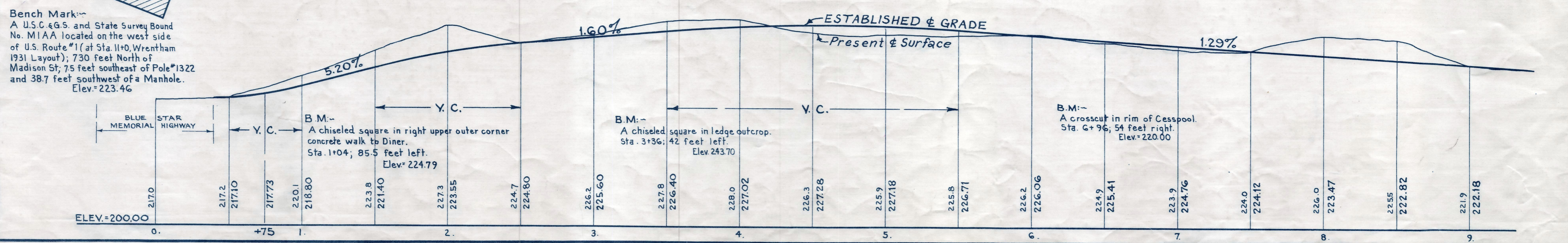
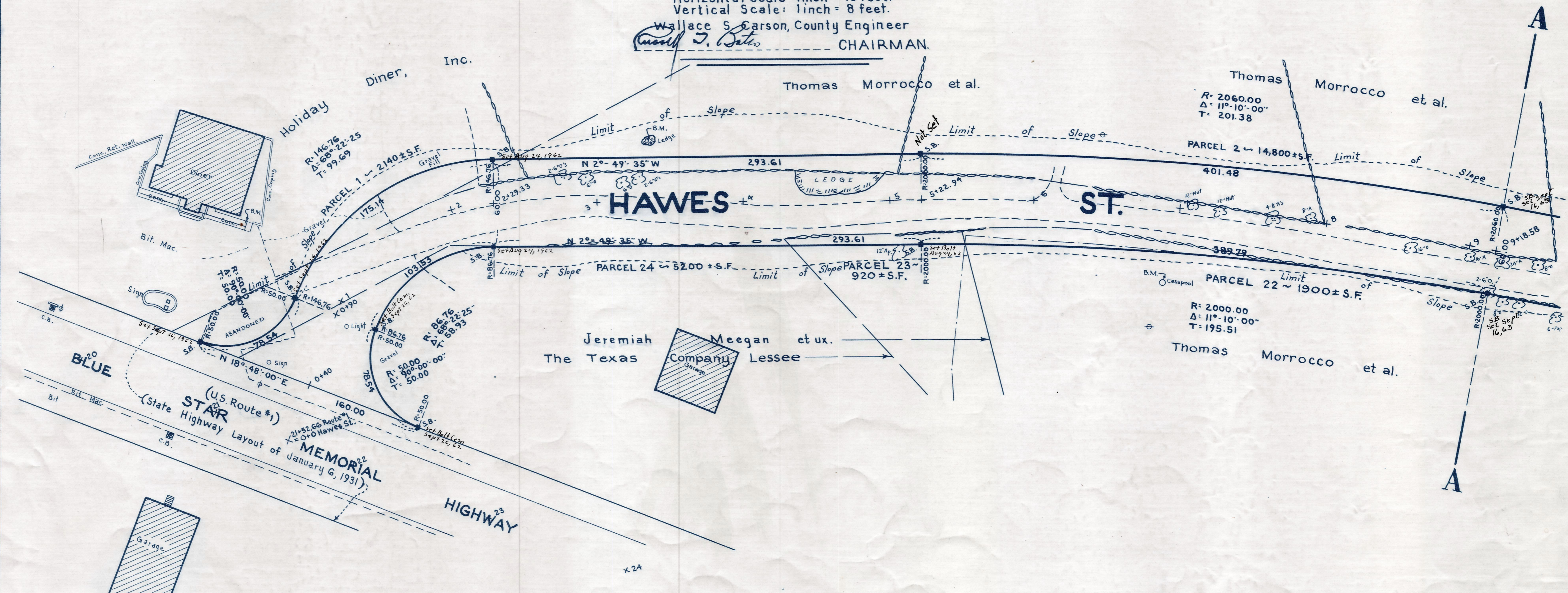
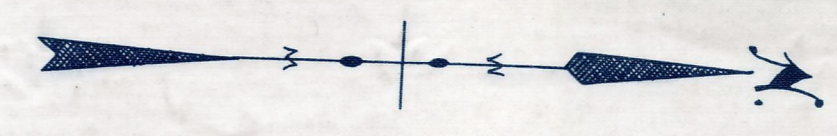
Plan and Profile  
showing the Relocation and Widening  
of

# HAWES STREET, WRENTHAM

between  
BLUE STAR MEMORIAL HIGHWAY AND THURSTON STREET  
as made by the Norfolk County Commissioners  
by Return dated December 19, 1961

Horizontal Scale: 1 inch = 40 feet.  
Vertical Scale: 1 inch = 8 feet.

Wallace S. Carson, County Engineer  
*Russell J. Bates* CHAIRMAN.



Bench Mark:-  
A U.S.C. & G.S. and State Survey Bound  
No. M1AA located on the west side  
of U.S. Route #1 (at Sta. 11+0, Wrentham  
1931 Layout); 730 feet North of  
Madison St; 75 feet southeast of Pole #1322  
and 38.7 feet southwest of a Manhole.  
Elev. = 223.46

1200  
3958  
67146