

Plan and Profile
showing the Relocation and Widening
of a portion of
UNION STREET, BRAINTREE

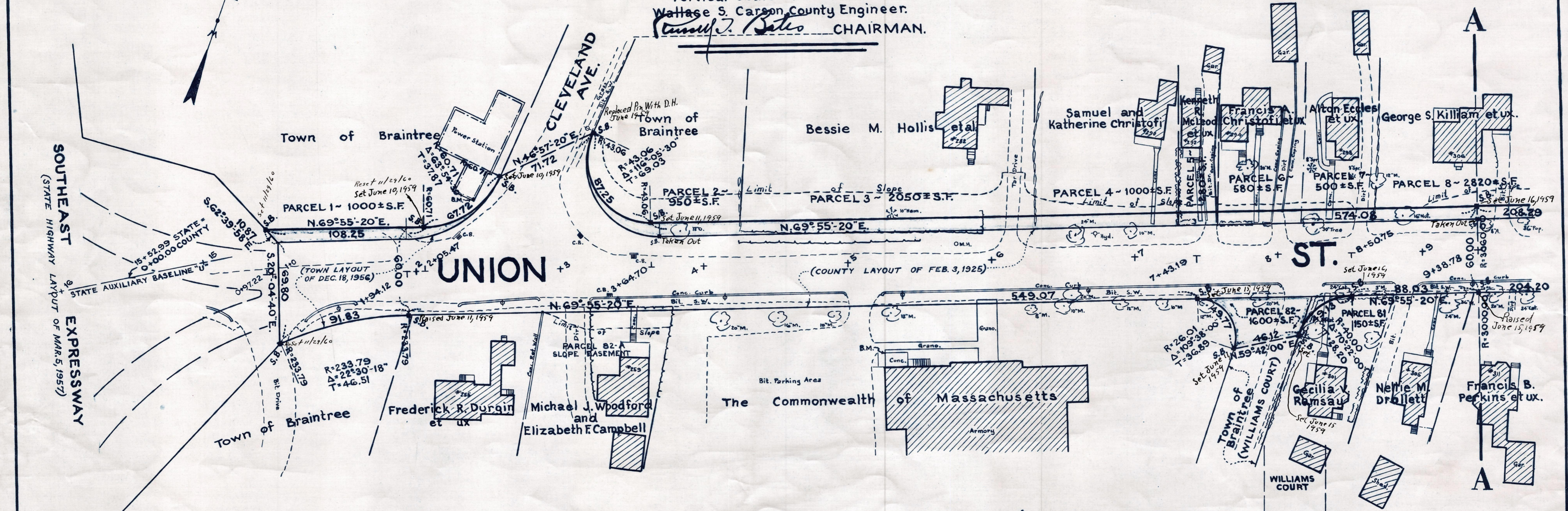
between
CLEVELAND AVENUE AND LIBERTY STREET

as made by the Norfolk County Commissioners
by Return dated February 10, 1959

Horizontal Scale: 1 inch = 40 feet.
Vertical Scale: 1 inch = 8 feet.

Wallace S. Carson County Engineer.

Samuel J. Bates CHAIRMAN.



Bench Mark:
U.S.C. & G. Survey and State Survey
Bound No. 13C. Located on the east side
of the N.Y., N.H. & H. R.R., 5.6 feet east of the
easterly rail and 178 ft. south of the center
of Union Street crossing. Elev. = 91.02

