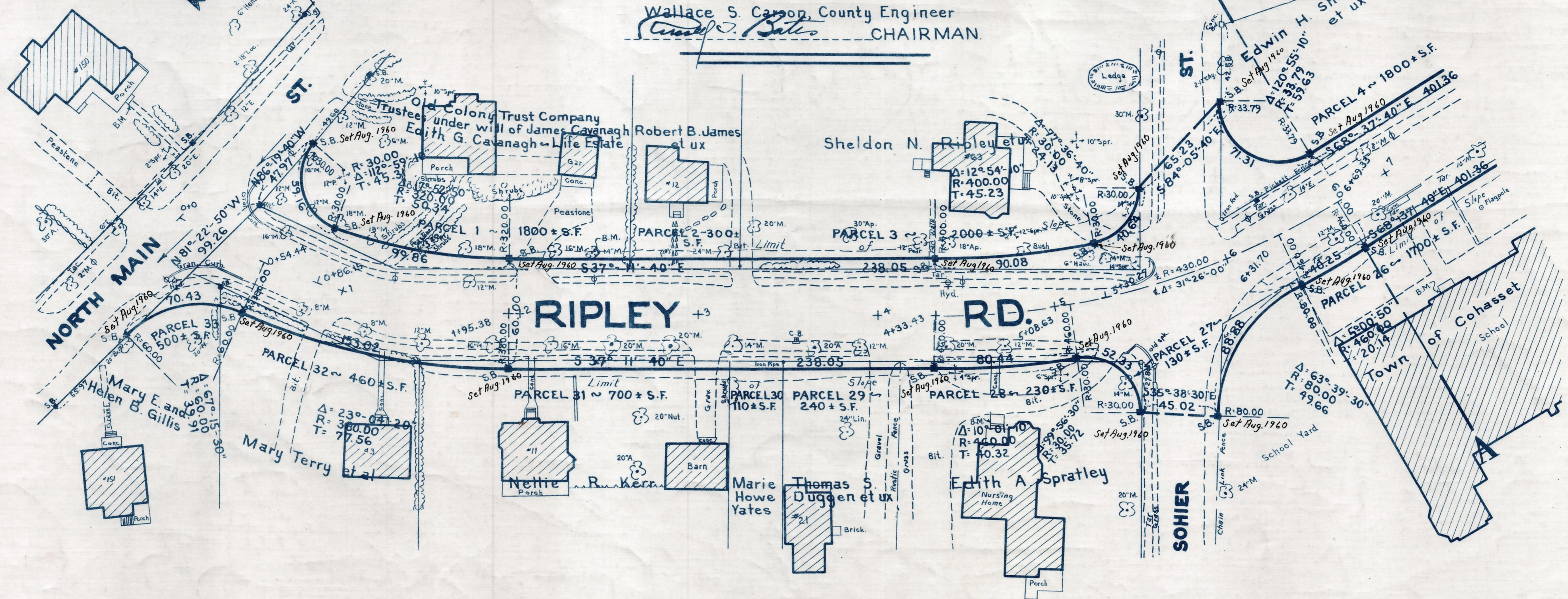


Plan and Profile
showing the Relocation and Widening
of
RIPLEY ROAD, COHASSET
between

NORTH MAIN STREET AND DEPOT COURT.
as made by the Norfolk County Commissioners
by Return dated: June 2, 1959

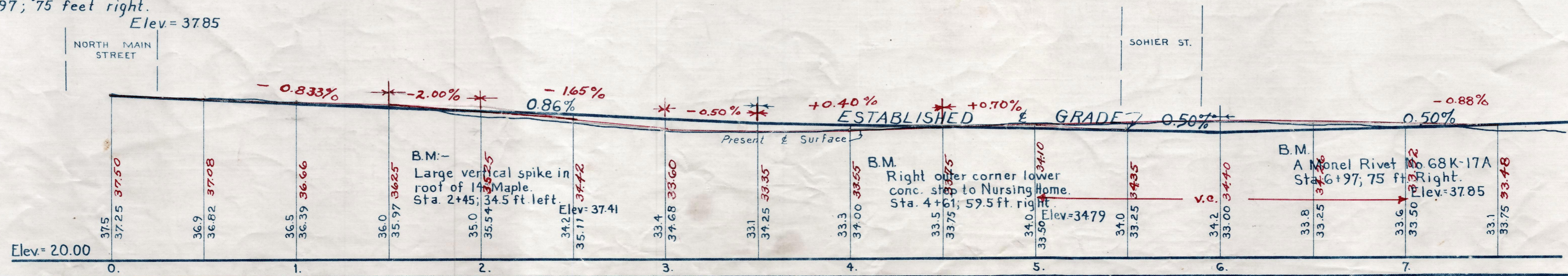
Horizontal Scale: 1 inch = 40 feet.
Vertical Scale: 1 inch = 8 feet.

Wallace S. Carson, County Engineer
Wallace S. Carson CHAIRMAN.



Bench Mark:-
A U.S.C. & G.S. and State Survey Bound
No. 68K & 17A set in the north side
of the doorsill of the center entrance
of the Ripley Road School.
Sta. = 6+97; 75 feet right.
Elev. = 3785

ELEV. IN RED REVISED BY D.P.W. SEPT 1959



REC. IN REGISTRY BK 3739-102
PL. BK. 207 NO. 755-757 INCL. 6-29-59 455-1