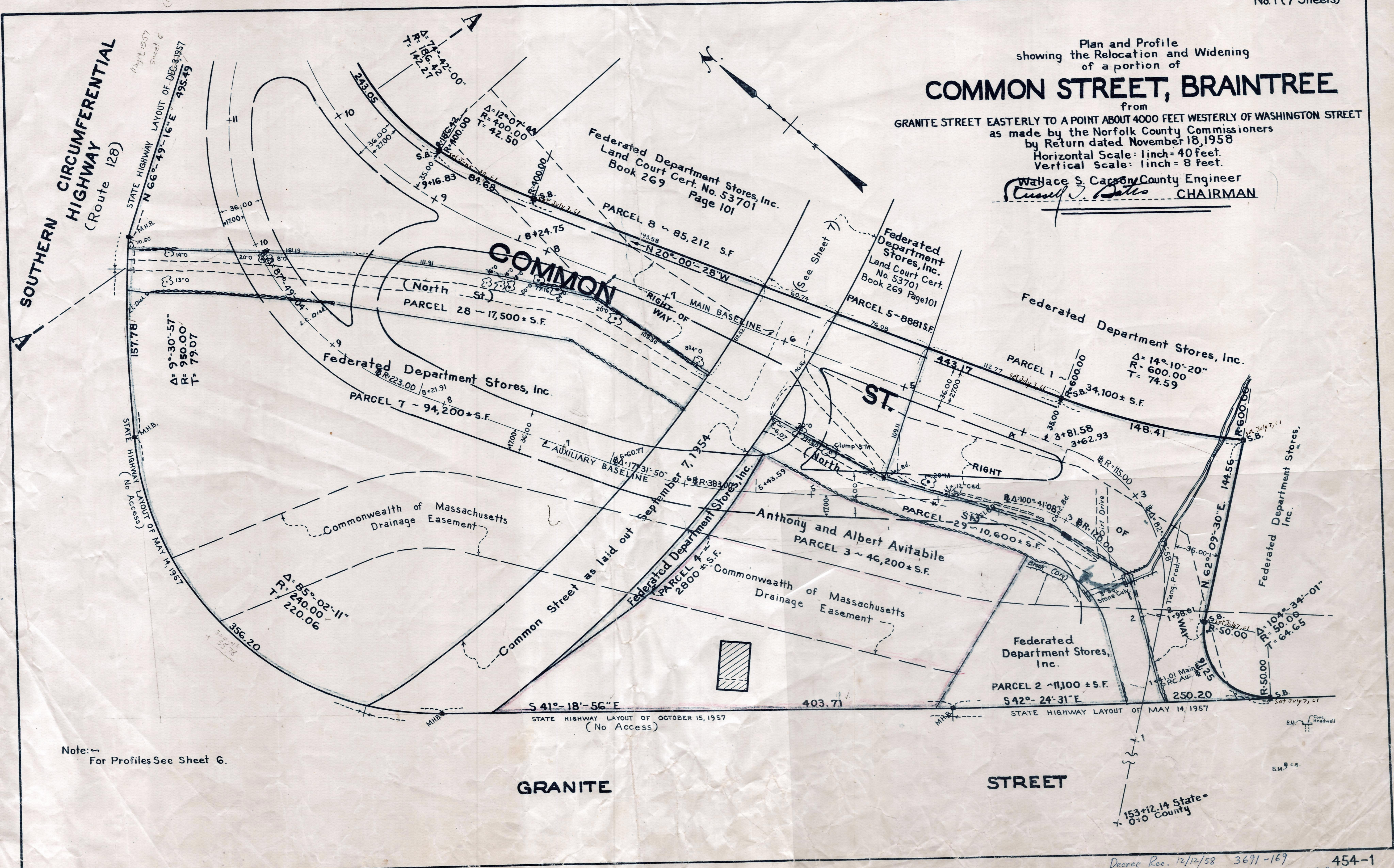


Plan and Profile showing the Relocation and Widening of a portion of **COMMON STREET, BRAINTREE**

from
GRANITE STREET EASTERLY TO A POINT ABOUT 4000 FEET WESTERLY OF WASHINGTON STREET
as made by the Norfolk County Commissioners
by Return dated November 18, 1958
Horizontal Scale: 1 inch = 40 feet.
Vertical Scale: 1 inch = 8 feet.

Wallace S. Carson County Engineer
Wallace S. Carson CHAIRMAN



Note: For Profiles See Sheet 6.

Dee. Rec. 12/12/58 3691-169 454-1 FEE
Plan Rec. Plan BK 206 # 1210-1216 of 1958

Date of Entry Dec. 23, 1958 (Rec. Dec. 31, 1958 3695/252)