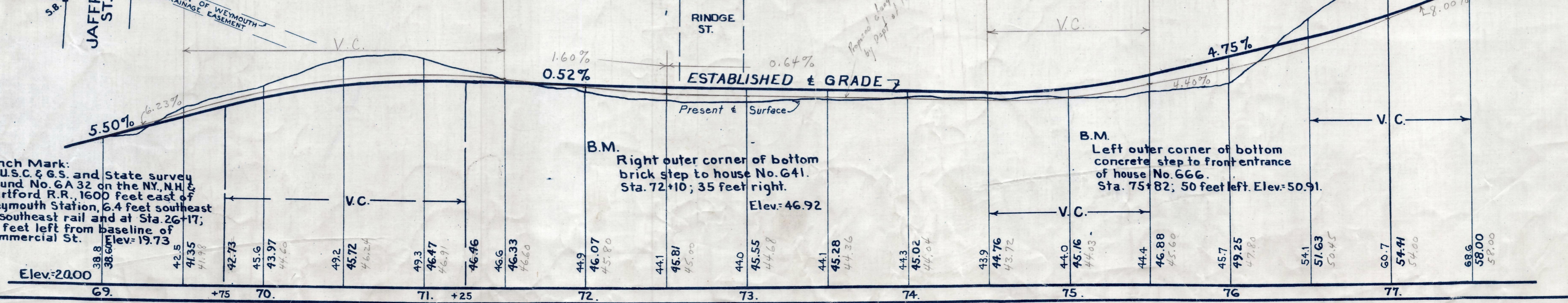
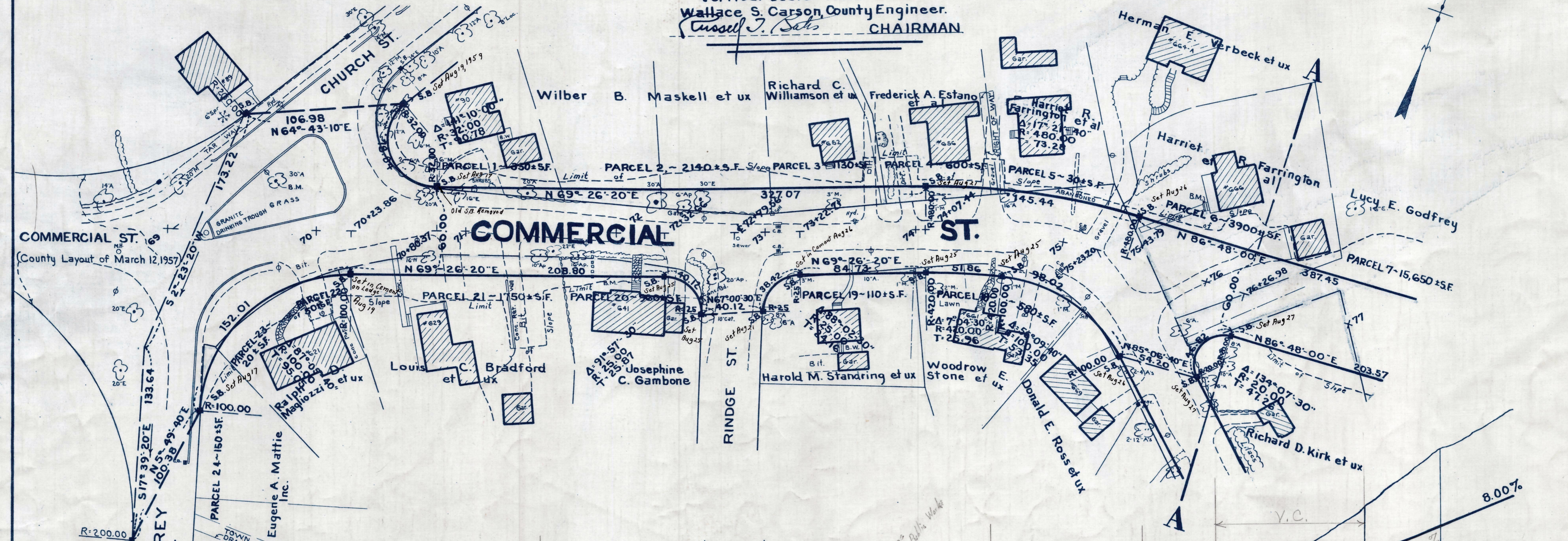
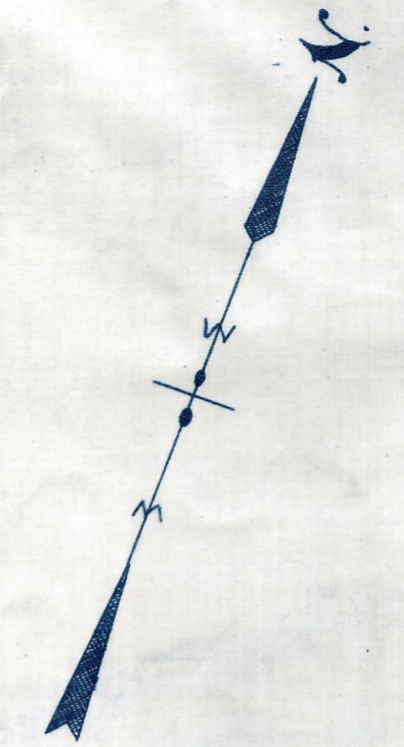


Plan and Profile showing the Relocation and Widening of a portion of **COMMERCIAL STREET, WEYMOUTH**

between
CHURCH STREET AND NORTH STREET
as made by the Norfolk County Commissioners
by Return dated August 19, 1958
Horizontal Scale: 1 inch = 40 feet.
Vertical Scale: 1 inch = 8 feet.
Wallace S. Carson County Engineer.
Russell J. Sals CHAIRMAN



Bench Mark:
A U.S.C. & G.S. and State survey
bound No. 6A 32 on the N.Y., N.H. &
Hartford R.R., 1600 feet east of
Weymouth Station, 6.4 feet southeast
of southeast rail and at Sta. 26+17;
38 feet left from baseline of
Commercial St.
Elev. = 19.73

B.M.
Right outer corner of bottom
brick step to house No. 641.
Sta. 72+10; 35 feet right.
Elev. = 46.92

B.M.
Left outer corner of bottom
concrete step to front entrance
of house No. 666.
Sta. 75+82; 50 feet left. Elev. = 50.91.

Elev. 20.00	38.8	42.5	43.35	43.97	49.2	45.72	49.3	46.47	46.46	46.6	46.33	44.9	46.07	44.1	45.81	44.0	45.55	44.1	45.28	44.3	45.02	43.9	44.76	44.0	45.76	44.4	46.88	45.7	49.25	54.1	51.63	60.7	54.41	68.6
69		+75	70				71	+25				72				73				74				75			76			77				