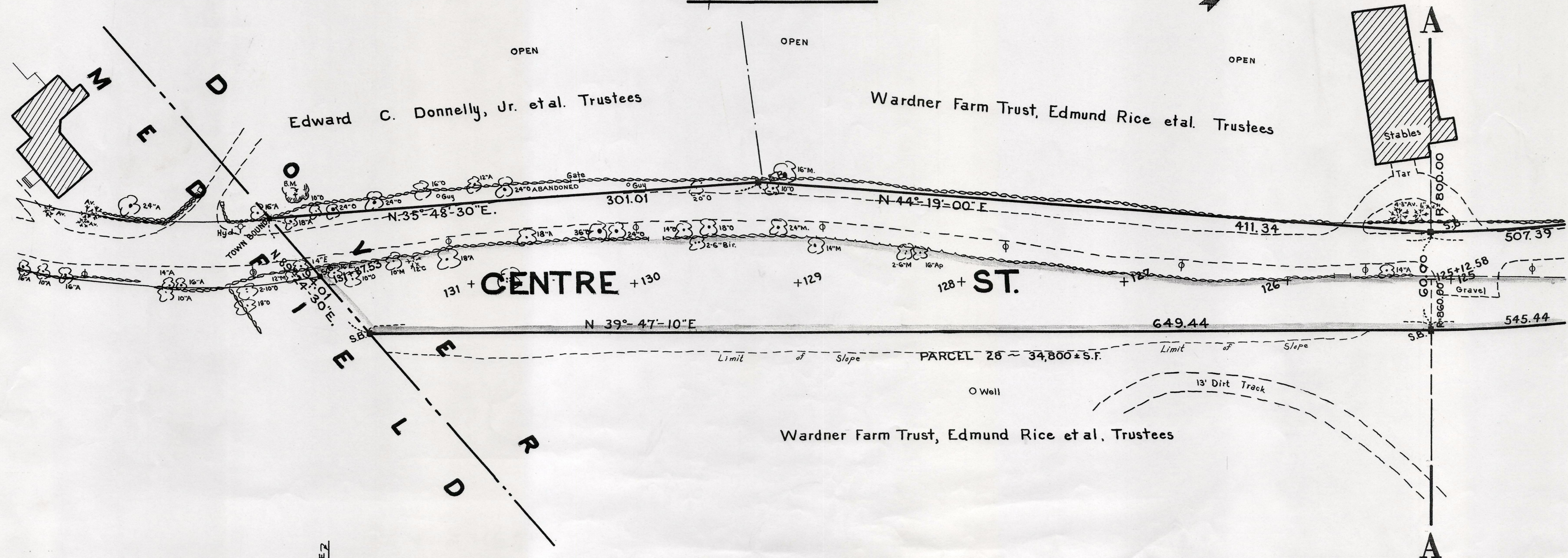
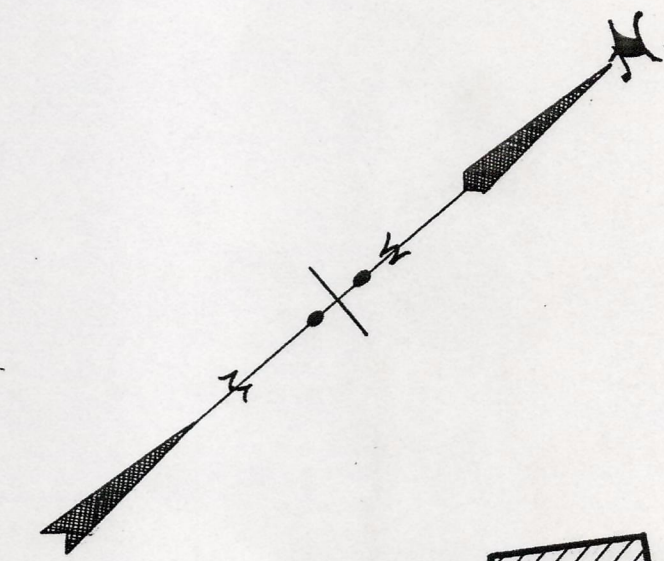


Plan and Profile
showing the Relocation and Widening
of a portion of
CENTRE STREET, DOVER

from
THE MEDFIELD TOWN LINE NORTHERLY TO STATION 37+81.93
as made by the Norfolk County Commissioners
by Return dated May 20, 1958
Horizontal Scale: 1 inch = 40 feet.
Vertical Scale: 1 inch = 8 feet.
Wallace S. Carson, County Engineer.
Cassell J. Bates CHAIRMAN



Bench Mark:
A Mass. Geodetic Survey T.B.M. No.2083
in Medfield. A chiseled square in ledge outcrop
located on the northwest side of the N.Y., N.H. &
H.R.R., 89.2 feet from northwest rail and 19 feet
southwest of center line of Farm St. Elev. = 183.07

B.M.
A chiseled square in ledge
Sta. 132+06; 55 feet right.
Elev. = 221.32

