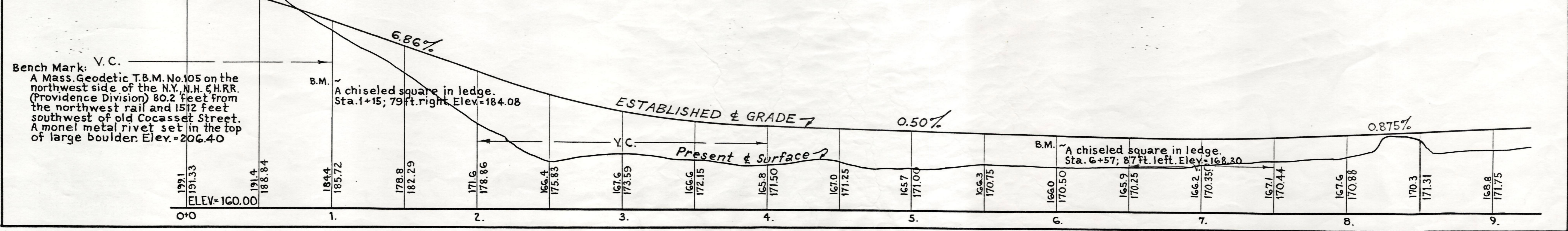
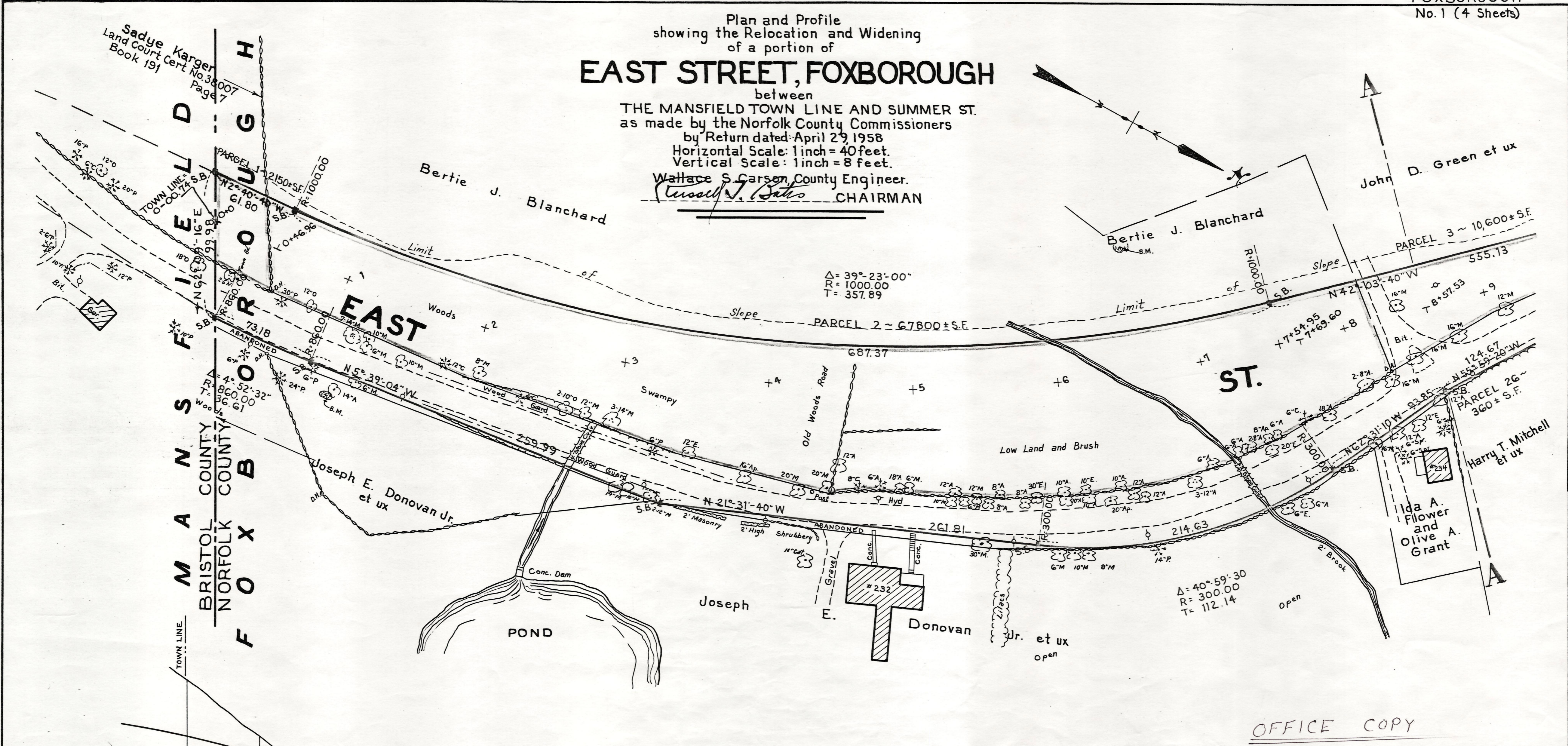


Plan and Profile
showing the Relocation and Widening
of a portion of
EAST STREET, FOXBOROUGH

between
THE MANSFIELD TOWN LINE AND SUMMER ST.
as made by the Norfolk County Commissioners
by Return dated April 29 1958
Horizontal Scale: 1 inch = 40 feet.
Vertical Scale: 1 inch = 8 feet.
Wallace S. Carson, County Engineer.
Carroll J. Bates CHAIRMAN



OFFICE COPY