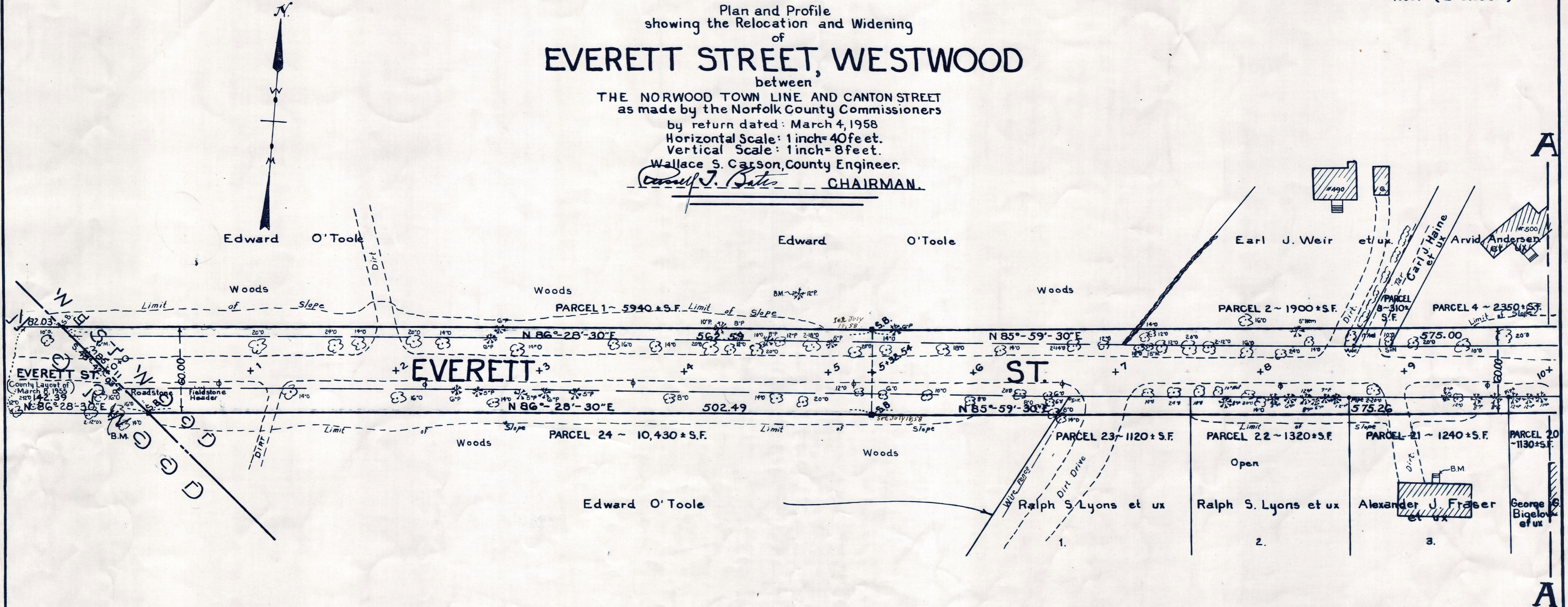


Plan and Profile
showing the Relocation and Widening
of
EVERETT STREET, WESTWOOD

between
THE NORWOOD TOWN LINE AND CANTON STREET
as made by the Norfolk County Commissioners
by return dated: March 4, 1958
Horizontal Scale: 1 inch = 40 feet.
Vertical Scale: 1 inch = 8 feet.
Wallace S. Carson, County Engineer.
Conrad J. Bates CHAIRMAN.



Bench Mark:-
A U.S. Coast and Geodetic Survey bound
No. M18F in the Town of Westwood, 825
feet north of the Norwood - Westwood
T.L. on U.S. Route No. 1; 44.2 feet east of
center line. Elev. = 78.21

B.M.:-
Vertical Spike in 14" Oak.
Sta. 0+10; 31 feet right
Elev. = 33.58

B.M.:-
Vertical spike in root of 12" pine
Sta. 4+78; 58 ft. left.
Elev. = 151.31

B.M.:-
Left outer corner of bottom
brick step to House No. 495.
Sta. 9+22; 73.5 ft. right.
Elev. = 171.58

