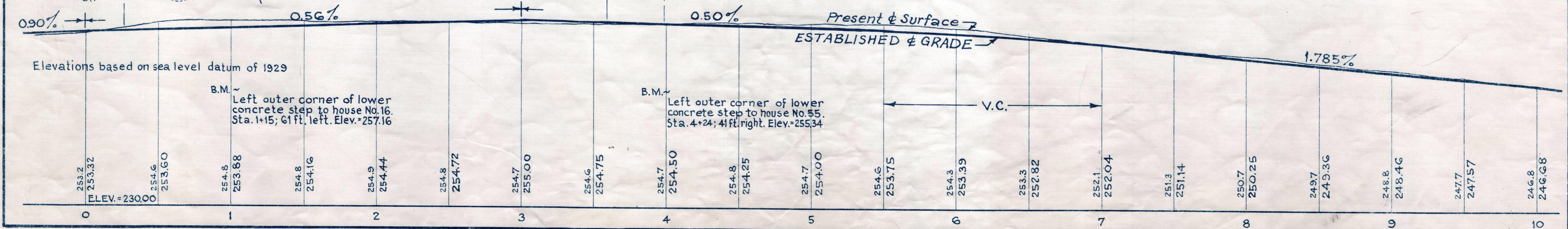
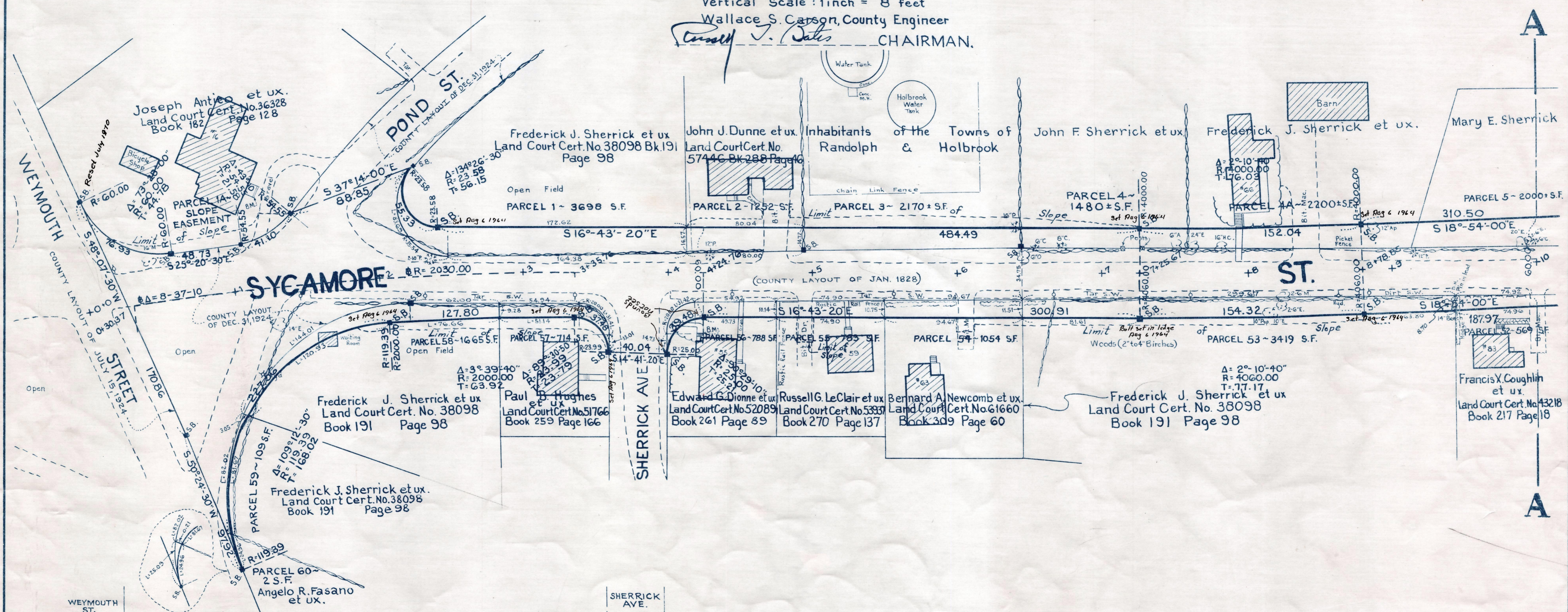


Plan and Profile
showing the Relocation and Widening
of
SYCAMORE ST. HOLBROOK

between
WEYMOUTH ST. AND PLYMOUTH ST.
as made by the Norfolk County Commissioners
by Return dated July 16, 1963

Horizontal Scale : 1 inch = 40 feet
Vertical Scale : 1 inch = 8 feet

Wallace S. Carson, County Engineer
Wallace S. Carson CHAIRMAN.



CRIF. ORDER RELOCATION BK. 4098 Pg. 213 8-23-63
TK6. BK. 4093 Pg. 19, PL. BK. 215 PLS. 831-835 INCL. 8-5-63

440-1

Date of Entry - August 8, 1963