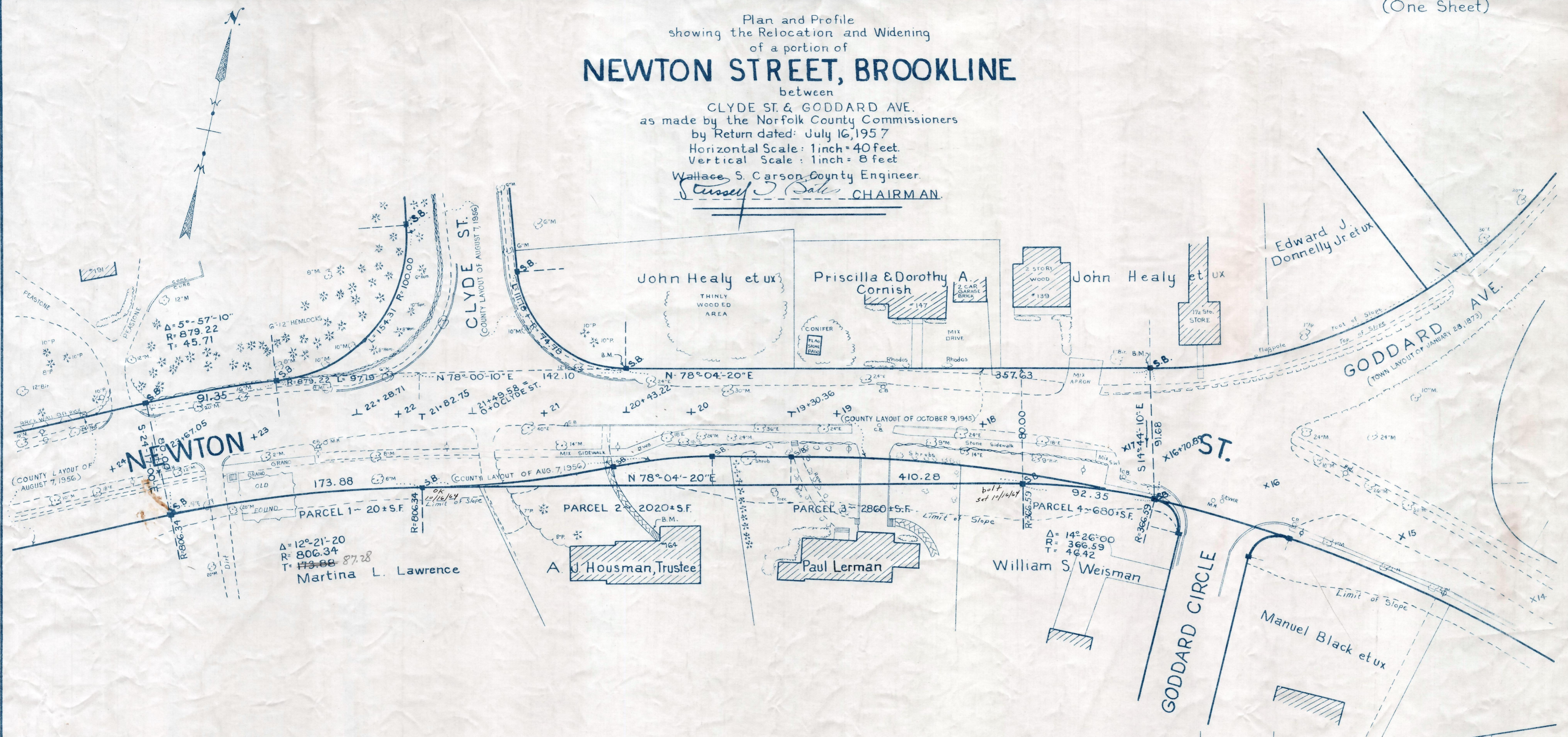
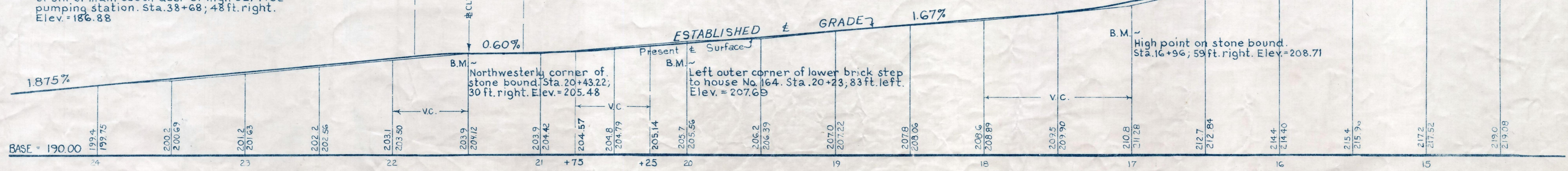


Plan and Profile
showing the Relocation and Widening
of a portion of
NEWTON STREET, BROOKLINE

between
CLYDE ST. & GODDARD AVE.
as made by the Norfolk County Commissioners
by Return dated: July 16, 1957
Horizontal Scale: 1 inch = 40 feet
Vertical Scale: 1 inch = 8 feet
Wallace S. Carson County Engineer.
W. S. Carson CHAIRMAN.



Bench Mark:
A U.S.C. & G.S. and State Survey bound
No. 68E-G2. A monel rivet, set at west end
of sill of main south door of High Service
pumping station. Sta. 38+68; 48 ft. right.
Elev. = 186.88



CRTF. ORDER RELOCATION BK. 3629 PG. 40 4-7-58
TK6. BK. 3578 PG. 274, PL. BK. 204 PL. 861 8-1-58

Date of Entry March 18, 1958.