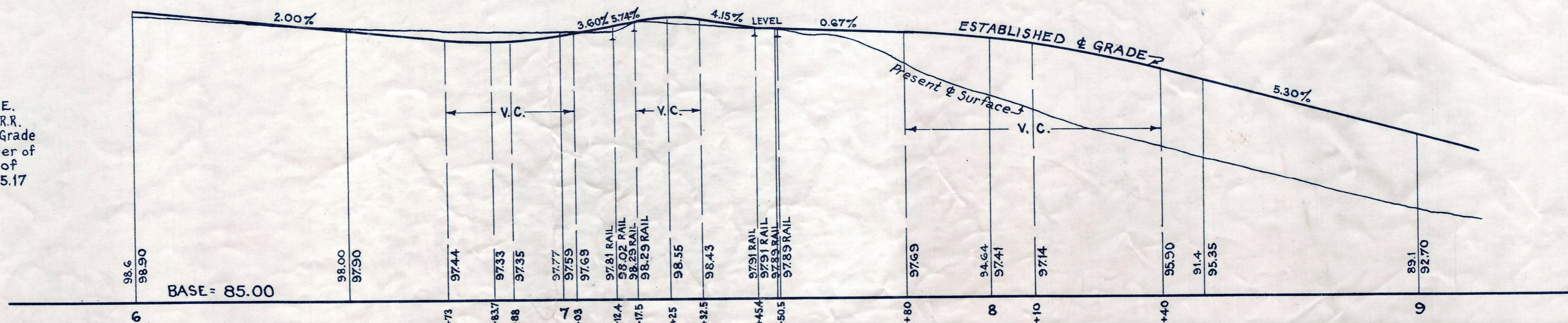
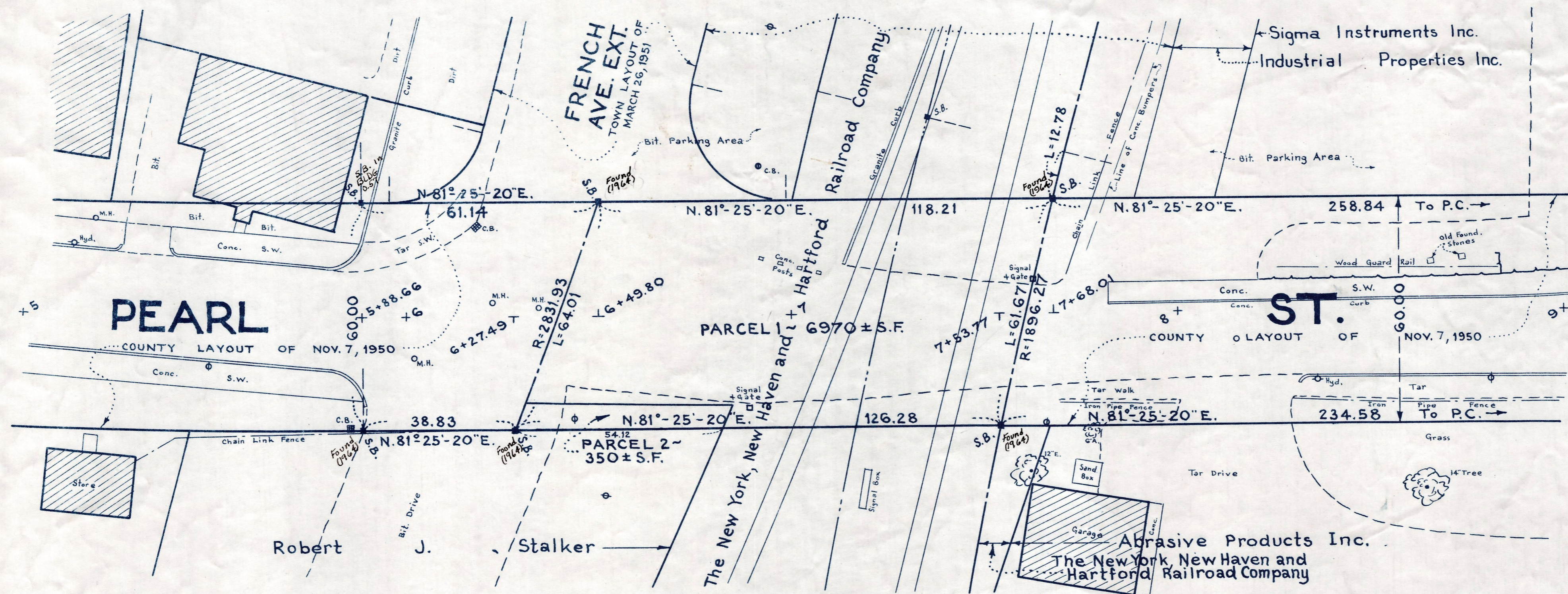


Plan and Profile
showing Alteration of Railroad Crossing
on
PEARL STREET, BRAINTREE

as made by the Norfolk County Commissioners
by Decision dated: June 25, 1957
Horizontal Scale: 1 inch = 20 feet. Vertical Scale: 1 inch = 4 feet.

Wallace S. Carson, County Engineer
Wallace S. Carson
CHAIRMAN



Bench Mark:
A U.S.C. & G.S. and State Survey Bound No. 13E.
Located in South Braintree on the N.Y., N.H., & H.R.R.
about 390 ft. south of the center of Pearl St. Grade
Crossing, 132 ft. west of the southwest corner of
Abrasive Products Inc. and 42.3 feet west of
the South Weymouth bound tracks. Elev. = 95.17

B.M. ~
Left outer corner of bottom
concrete step. Sta. 4+53; 29 ft.
right. Elev. = 103.19