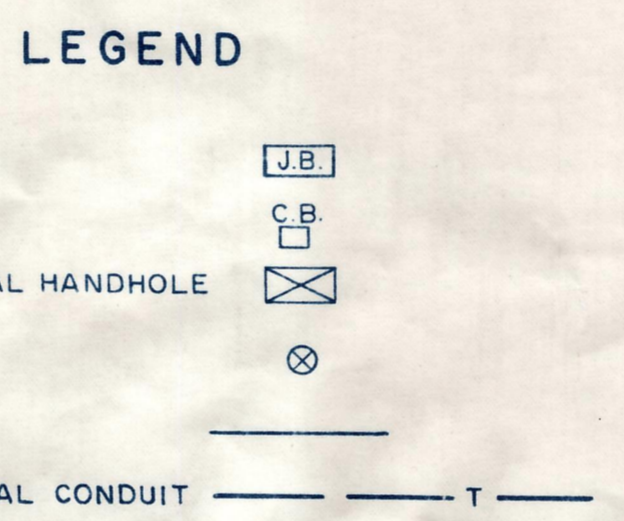
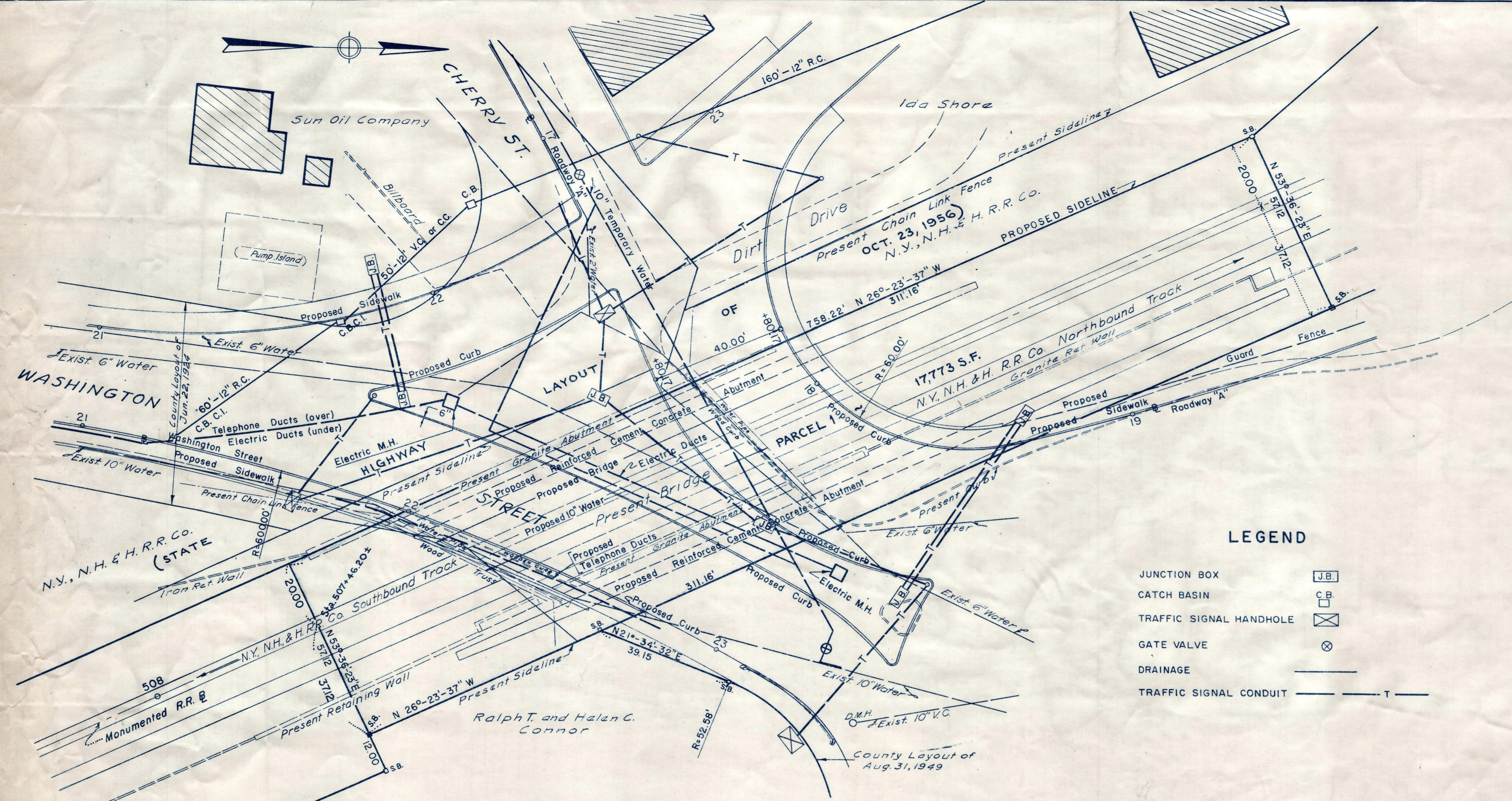


Plan and Profile
 Showing Alterations
 on
WASHINGTON STREET, BRAINTREE

at the Crossing of the
 New York, New Haven and Hartford Railroad Company
 as made by the Norfolk County Commissioners
 by Decision Dated April 16, 1957

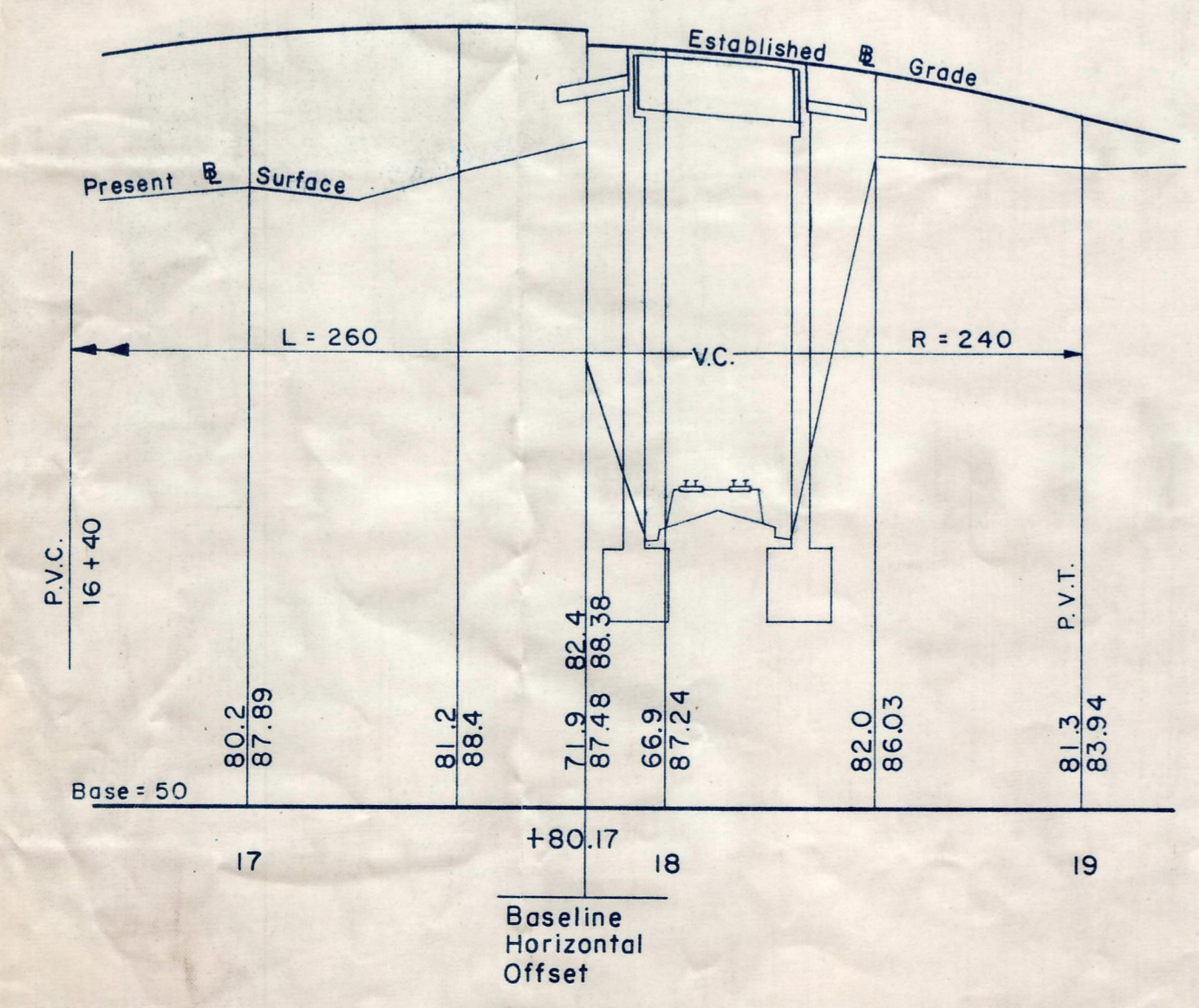
Scales as noted
 Wallace S. Carson, County Engineer
Wallace S. Carson, Chairman

- A TRUE COPY -
 Attest: _____ Clerk

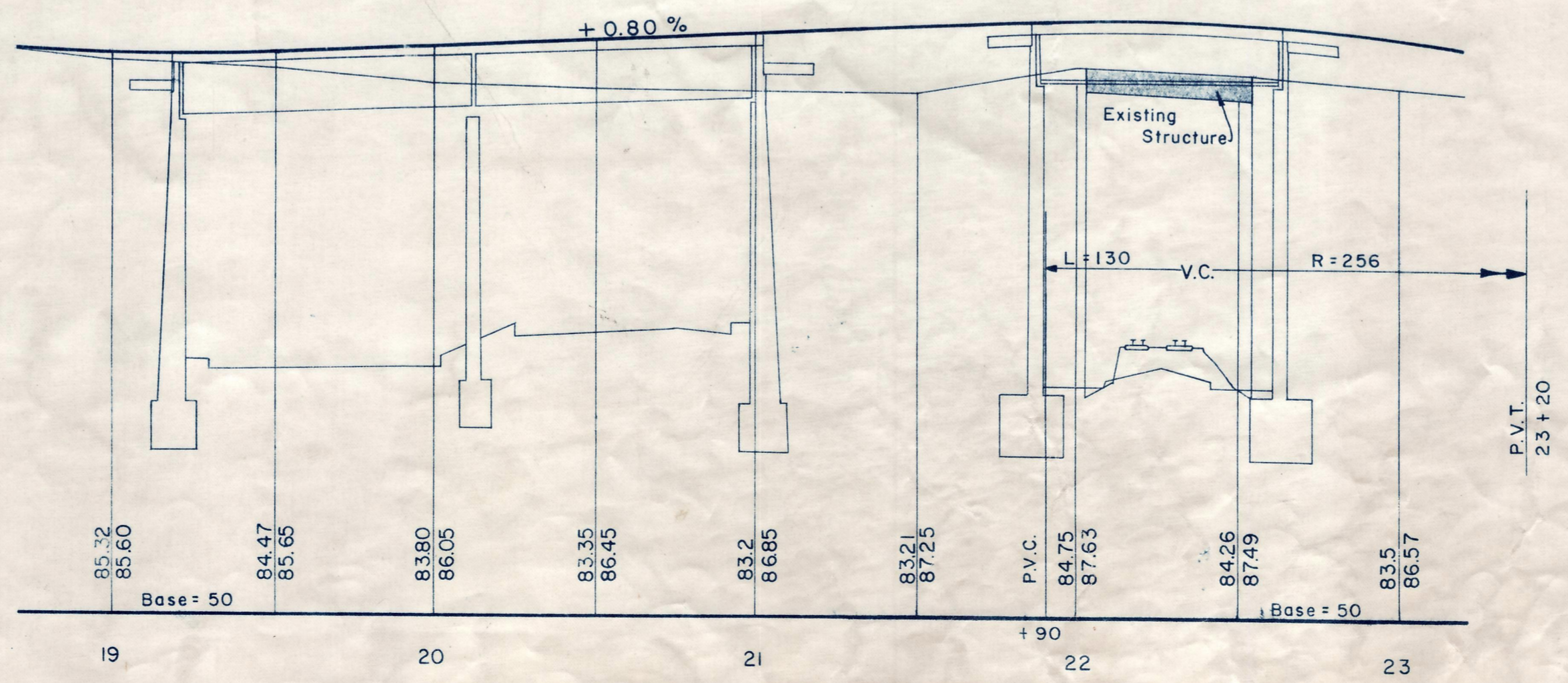


LOCATION PLAN
 Scale: 1" = 20'

B.M. #6 442+53.304 ± LT.
 R.O.C. Middle Conc. Step #32
 Cavanaugh Rd.
 Elevation 76.769
 SEA LEVEL DATUM of 1929



PROFILE ROADWAY A
 Scales: Hor. 1" = 40'
 Vert. 1" = 8'



PROFILE WASHINGTON ST.
 Scales: Hor. 1" = 40'
 Vert. 1" = 8'

TKG. BK. 3555/164, PL. BK. 204 PL. 452 1/2 459 4-26-57

Copy of Decree
 in Env. 298