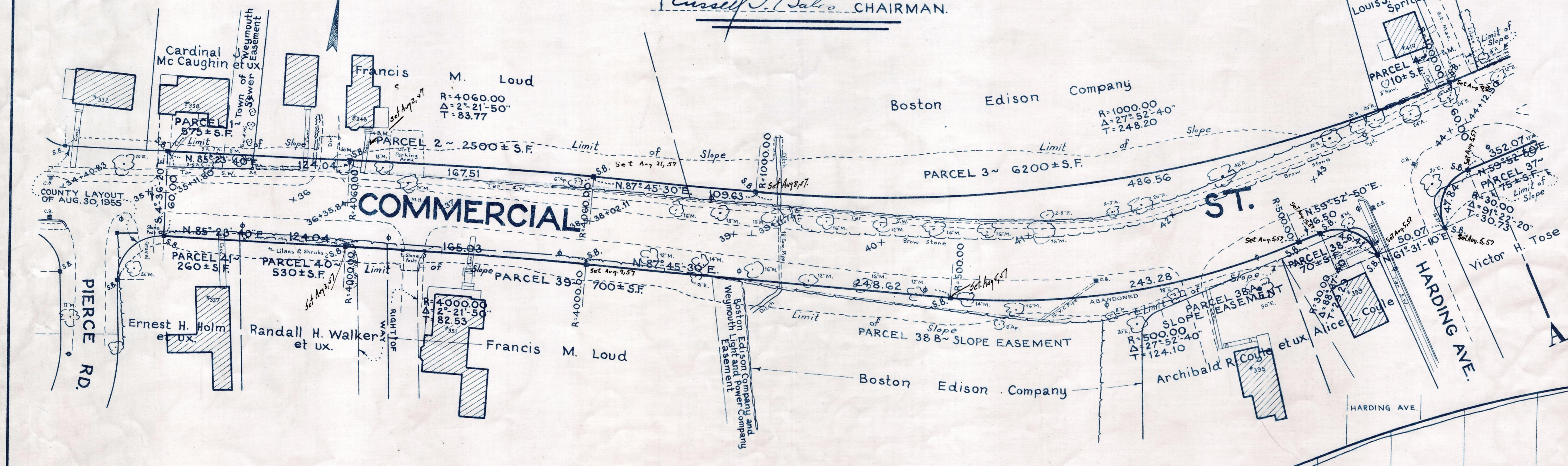


Plan and Profile showing the Relocation and Widening of a portion of **COMMERCIAL STREET, WEYMOUTH**

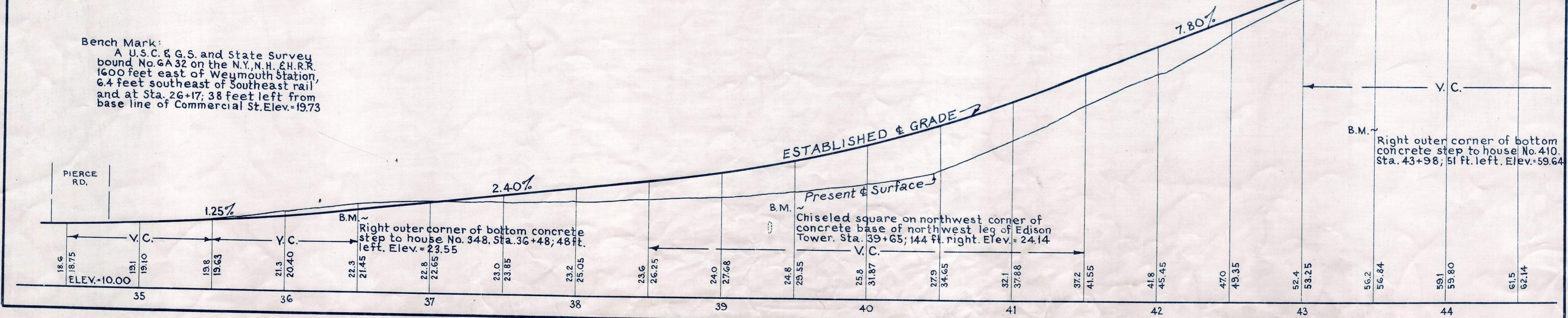
between
PIERCE ROAD AND CHURCH STREET
as made by the Norfolk County Commissioners
by Return dated March 12, 1957

Horizontal Scale: 1 inch = 40 feet.
Vertical Scale: 1 inch = 8 feet.

Wallace S. Carson, County Engineer.
Russell J. Datto CHAIRMAN.



Bench Mark:
A U.S.C. & G.S. and State Survey
bound No. 6A 32 on the N.Y., N.H. & H.R.R.
1600 feet east of Weymouth Station,
6.4 feet southeast of Southeast rail
and at Sta. 26+17; 38 feet left from
base line of Commercial St. Elev. = 19.73



CERT. ORDER RELOCATION BK. 3554 P. 475 4-25-57
TK6. BK. 3550 P. 256, PL. BK. 203 PLS. 309-312 INCL.
4-4-57

433-1

Date of Entry ~ April 15, 1957