

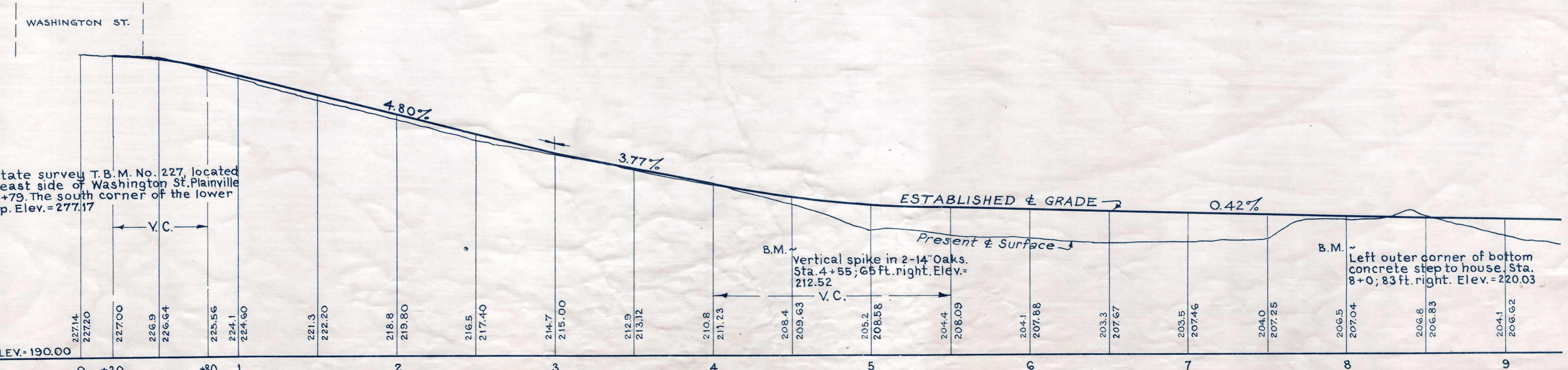
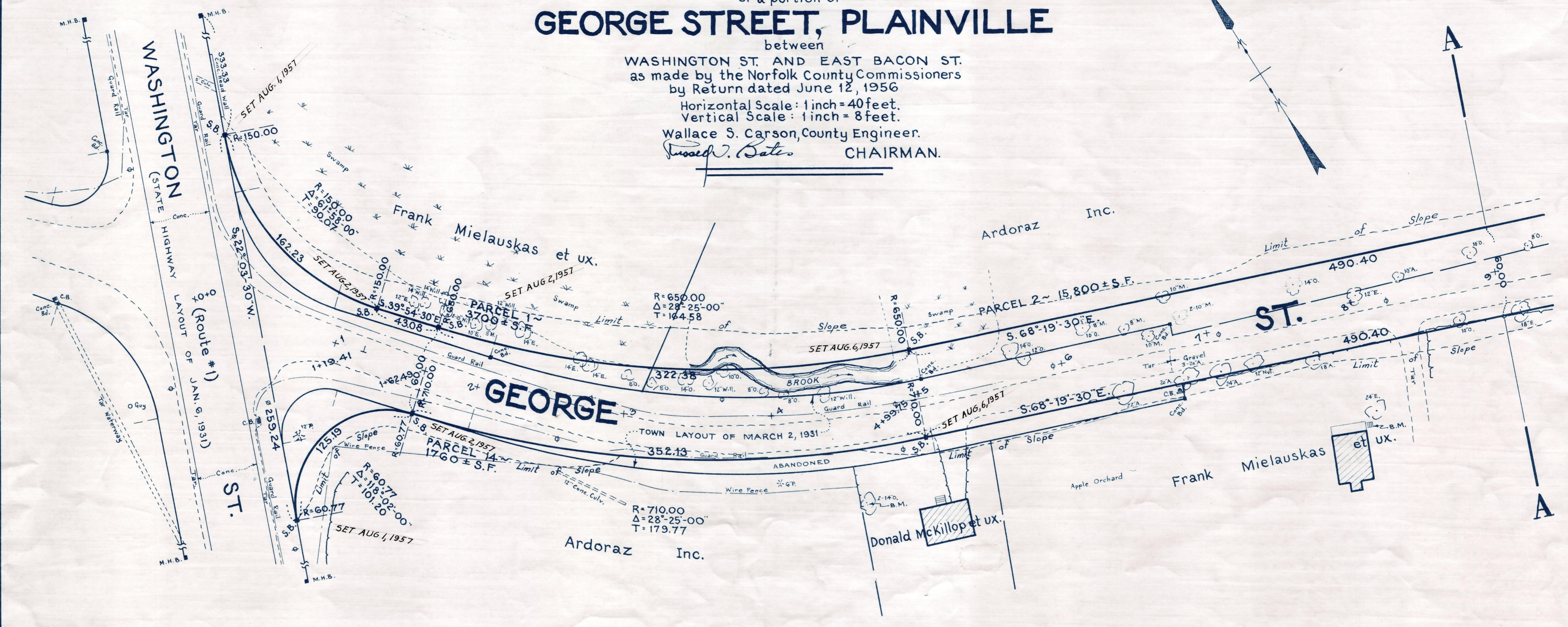
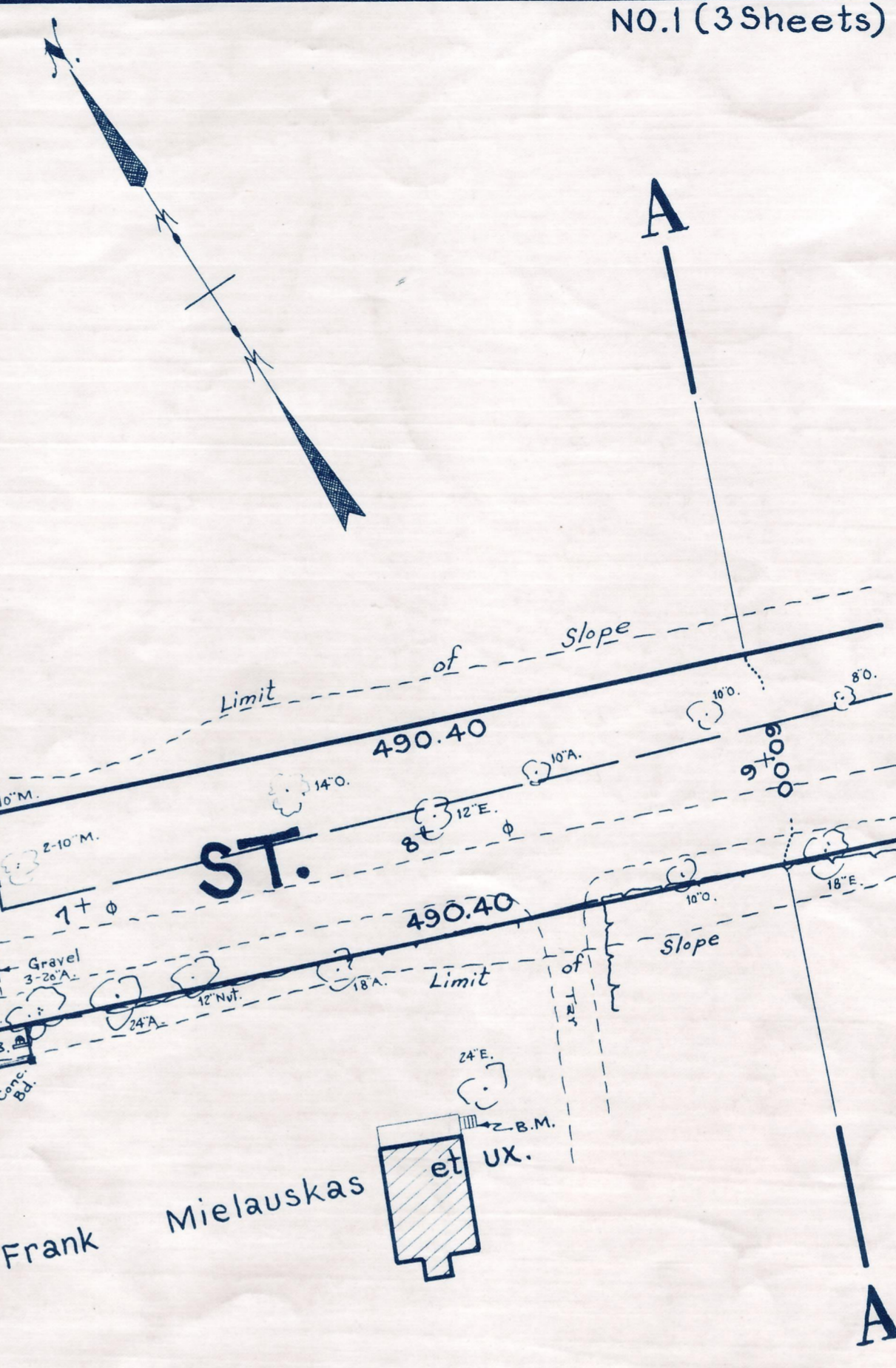
Plan and Profile
showing the Relocation and Widening
of a portion of

GEORGE STREET, PLAINVILLE

between
WASHINGTON ST. AND EAST BACON ST.
as made by the Norfolk County Commissioners
by Return dated June 12, 1956

Horizontal Scale: 1 inch = 40 feet.
Vertical Scale: 1 inch = 8 feet.

Wallace S. Carson, County Engineer.
W. Bates CHAIRMAN.



Bench Mark:
A Mass. State survey T.B.M. No. 227, located
on the northeast side of Washington St. Plainville
at station 48+79. The south corner of the lower
concrete step. Elev. = 277.17

B.M. Vertical spike in 2-14" Oaks.
Sta. 4+55; 65 ft. right. Elev. = 212.52

B.M. Left outer corner of bottom
concrete step to house. Sta.
8+00; 83 ft. right. Elev. = 220.03