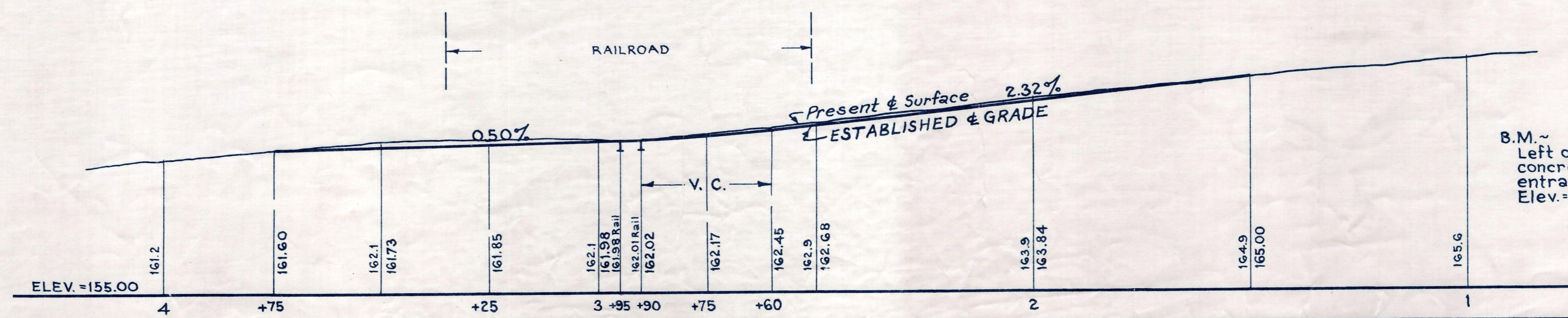
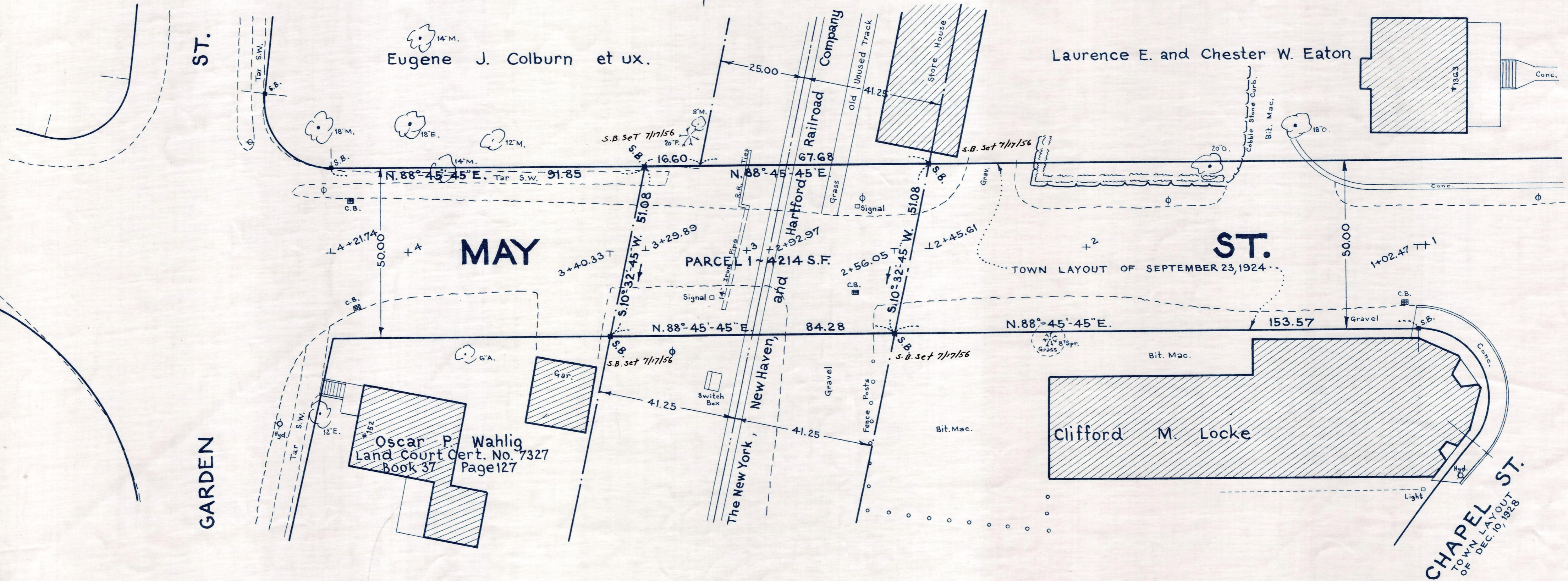


Plan and Profile
of
MAY STREET, NEEDHAM

Laid out as a Public Way
across

The New York, New Haven, and Hartford Railroad Company
as made by the Norfolk County Commissioners
by Return dated May 8, 1956
Horizontal Scale: 1 inch = 20 feet.
Vertical Scale: 1 inch = 4 feet.
Wallace S. Carson, County Engineer.
W. S. Carson CHAIRMAN.



Bench Mark:
A Mass. Dept. of Public Works standard
bench mark No. AB-15. A disk set in the top of
buttress, on the north side of step, at the east
entrance to the town hall. Elev. = 169.17

B.M. ~
Left outer corner of lower
concrete step at front main
entrance to Catholic Church.
Elev. = 167.77

Recorded
9-11-66
3511-158