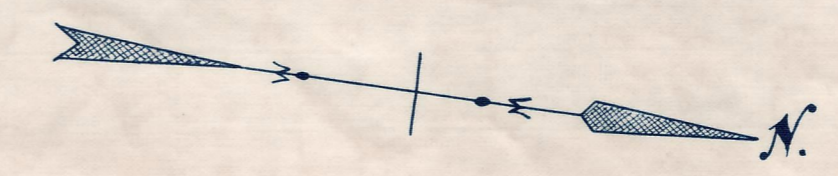
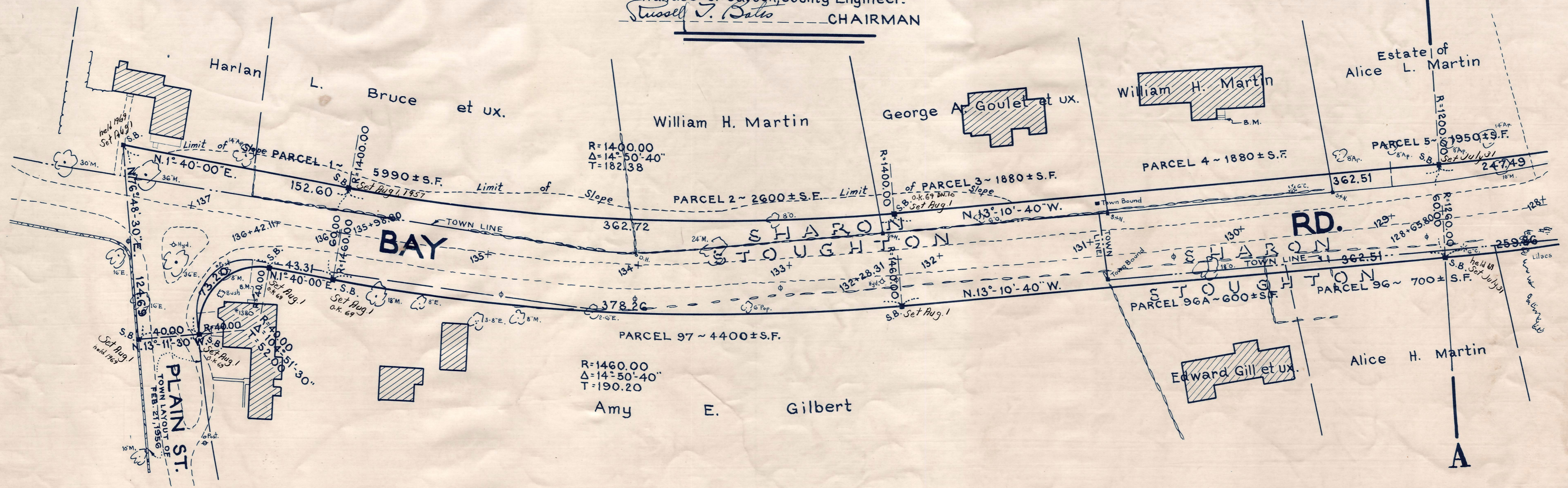


Plan and Profile  
showing the Relocation and Widening  
of a portion of  
**BAY ROAD, SHARON**  
between  
**PLAIN STREET AND NORTH MAIN STREET**  
as made by the Norfolk County Commissioners  
by Return dated July 17, 1956  
Horizontal Scale: 1 inch = 40 feet.  
Vertical Scale: 1 inch = 8 feet.  
Wallace S. Carson, County Engineer.  
*Russell J. Balto* CHAIRMAN



A  
↑  
A



Station	Elevation	Notes
137	220.90	1.67%
	221.18	
	221.53	B.M. - Left outer corner of granite step to house. Sta. 136+48; 52 ft. left. Elev. = 223.50
	222.01	
	222.51	ESTABLISHED & GRADE
	222.85	
	222.74	Present & Surface
	223.68	
	223.12	0.68%
	224.02	
	223.43	B.M. - Right outer corner of lower concrete step to house. Sta. 130+05; 71 ft. right. Elev. = 228.45
	224.36	
	223.84	
	224.70	
	224.4	
	225.04	
	225.14	
	225.38	
	225.68	
	225.72	
	225.95	
	226.06	
	226.20	
	226.40	
	226.54	
	226.74	
	226.86	
	227.08	
	227.27	
	227.42	
	227.76	
	227.76	
	228.04	
	228.10	
	228.34	
	228.44	
	228.60	
	228.78	
	228.96	
	229.12	

CRTF. ORDER RELOCATION BK. 3505 Pg. 23 9.13.56  
TKG. BK. 3494 Pg. 513, PL. BK. 202 PLS. 1026-1040 INCL. 8.8.56  
See Acts & Resolves of 1957, Ch. 279 for T.L. Change

Date of Entry August 23, 1956

Sharon Copy