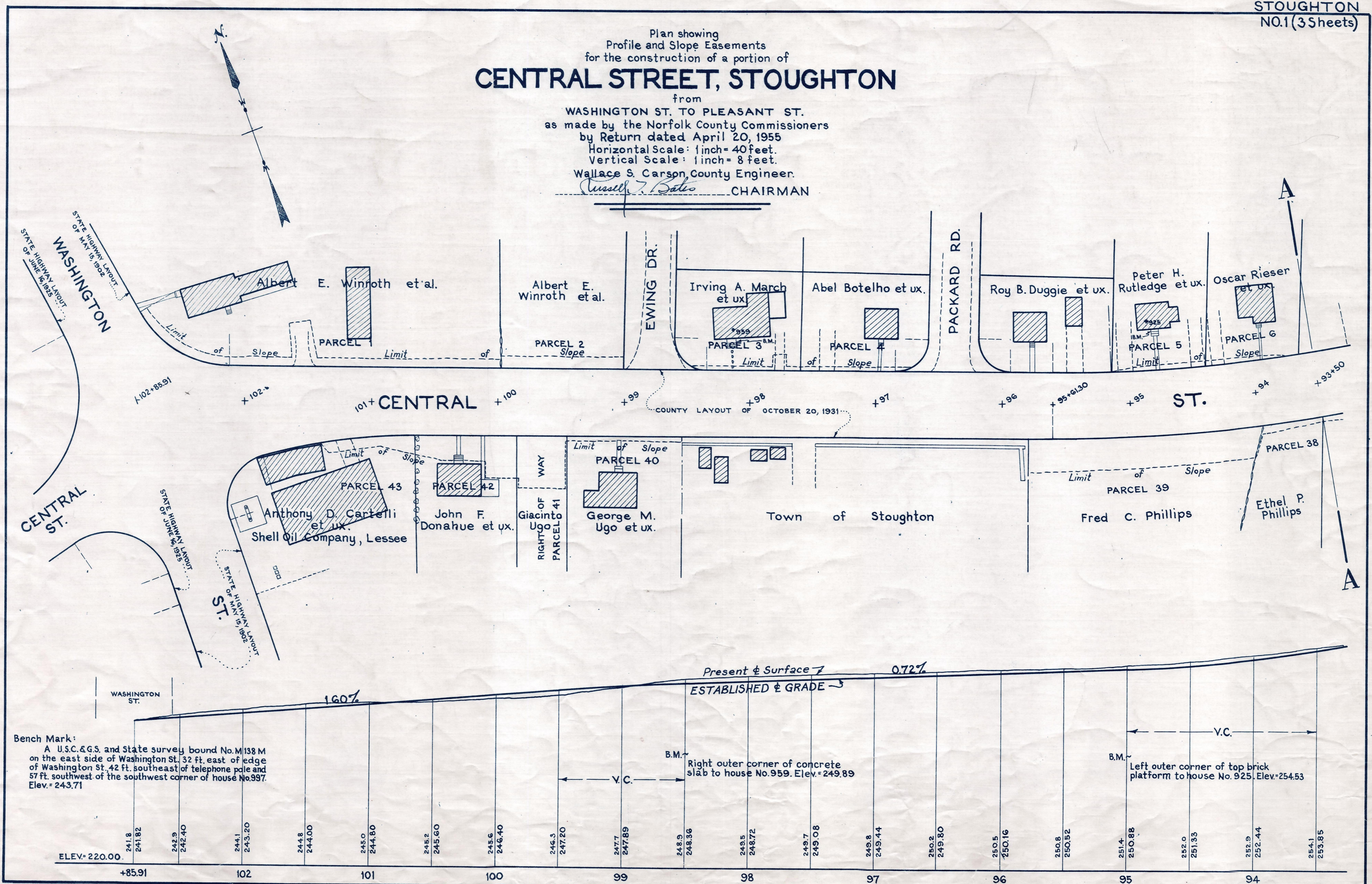


Plan showing  
Profile and Slope Easements  
for the construction of a portion of  
**CENTRAL STREET, STOUGHTON**

from  
WASHINGTON ST. TO PLEASANT ST.  
as made by the Norfolk County Commissioners  
by Return dated April 20, 1955  
Horizontal Scale: 1 inch = 40 feet.  
Vertical Scale: 1 inch = 8 feet.  
Wallace S. Carson, County Engineer.  
*Russell J. Bates* CHAIRMAN



Bench Mark:  
A U.S.C. & G.S. and State survey bound No. M138 M  
on the east side of Washington St. 32 ft. east of edge  
of Washington St. 42 ft. southeast of telephone pole and  
57 ft. southwest of the southwest corner of house No. 997.  
Elev. = 243.71

241.8	241.82	242.9	242.40	244.1	243.20	244.8	244.00	245.0	244.80	245.2	245.60	245.6	246.40	246.3	247.20	247.7	247.89	248.9	248.36	249.5	248.72	249.7	249.08	249.8	249.44	250.2	249.80	250.5	250.16	250.8	250.52	251.4	250.88	252.0	251.33	252.9	252.44	254.1	253.85		
+85.91		102		101		100		99		98		97		96		95		94																							