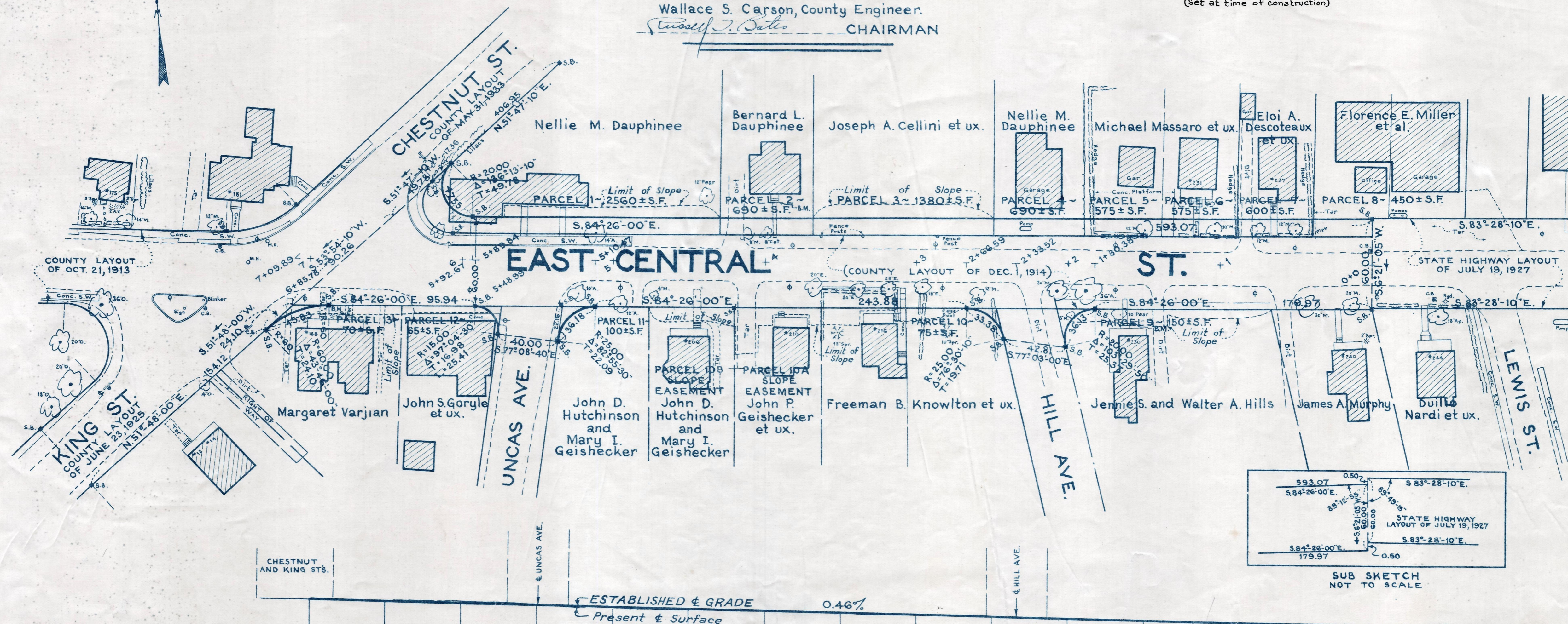


Plan and Profile  
showing the Relocation and Widening  
of a portion of  
**EAST CENTRAL STREET, FRANKLIN**

between  
KING STREET AND LEWIS STREET  
as made by the Norfolk County Commissioners  
by Return dated June 7, 1955  
Horizontal Scale: 1 inch = 40 feet.  
Vertical Scale: 1 inch = 8 feet.  
Wallace S. Carson, County Engineer.

*Russell J. Bates* CHAIRMAN

NOTE:  
S.B.'s O.K. on June 23, 1964.  
(Set at time of construction)



Bench Mark:  
A U.S.C. & Geodetic and State Survey bound No. 17C.K. located at the junction of East Central and Cross Sts. in Franklin, 274 ft. southwest of center line of East Central St., 51.2 ft. north of center line of Cross St., and 102.7 ft. southeast of northeast corner of house No. 140 East Central St. Elev. = 291.25

B.M. ~ Right outer corner of top granite step to house No. 190. Sta. 6+76; 38 ft. left. Elev. = 290.83

B.M. ~ Right outer corner of bottom brick step to house. Sta. 3+91; 41 ft. right. Elev. = 287.83

B.M. ~ Left outer corner of bottom concrete step to house No. 230. Sta. 1+61; 39 ft. left. Elev. = 286.44

ELEV.=260.00	288.2	288.20	288.1	287.99	287.8	287.76	287.5	287.53	287.3	287.30	287.1	287.07	286.9	286.84	286.6	286.61	286.4	286.38	286.3	286.15	285.9	285.92	285.7	285.69	285.5	285.46	285.4	285.23	285.1	285.00		
	7									5																						0