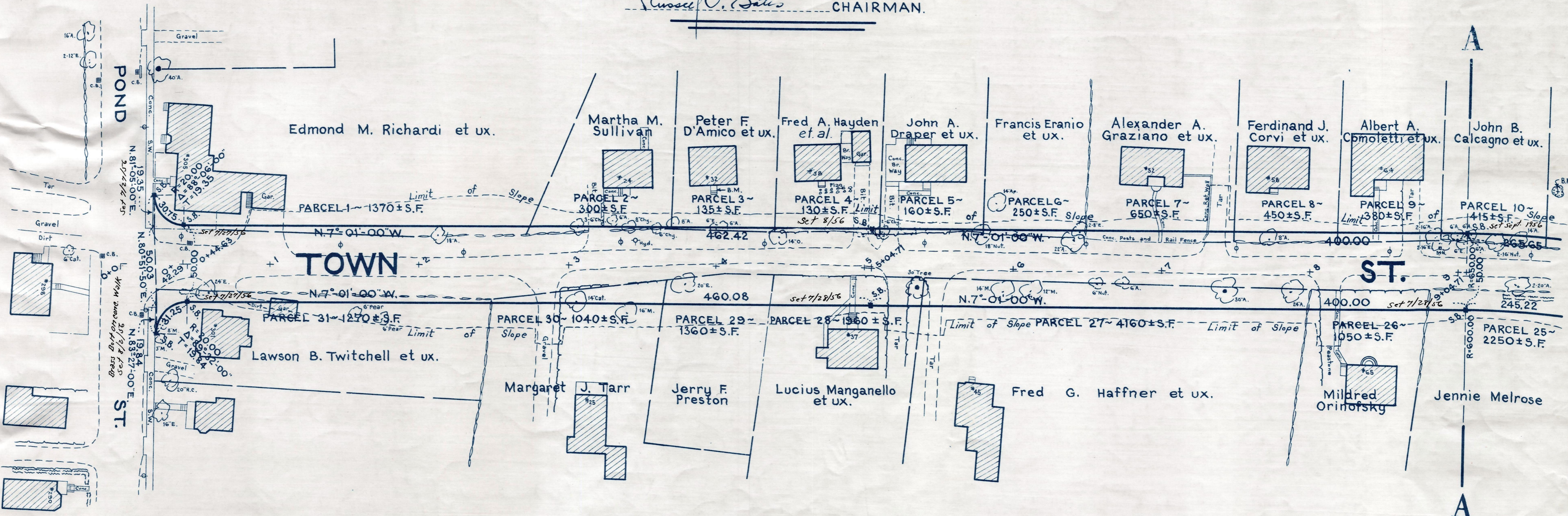
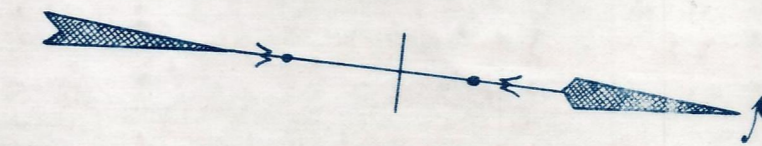


Plan and Profile
showing the Relocation and Widening
of
TOWN STREET, BRAINTREE

between
POND STREET AND GRANITE STREET
as made by the Norfolk County Commissioners
by Return dated June 12, 1956
Horizontal Scale: 1 inch = 40 feet.
Vertical Scale: 1 inch = 8 feet.
Wallace S. Carson, County Engineer.
Wassell V. Bates CHAIRMAN.



Bench Mark:
A U.S.C. & G.S. and State Survey bound
No. M 128 D.G. on the west side of Granite
St. about 85 ft. northwest of the intersection
with West St. and Franklin St.; 42.2 ft. east
of the southeast corner of foundation wall
of 365 West St. and 39.7 ft. north of highway
#128 sign. Elev. = 147.15

