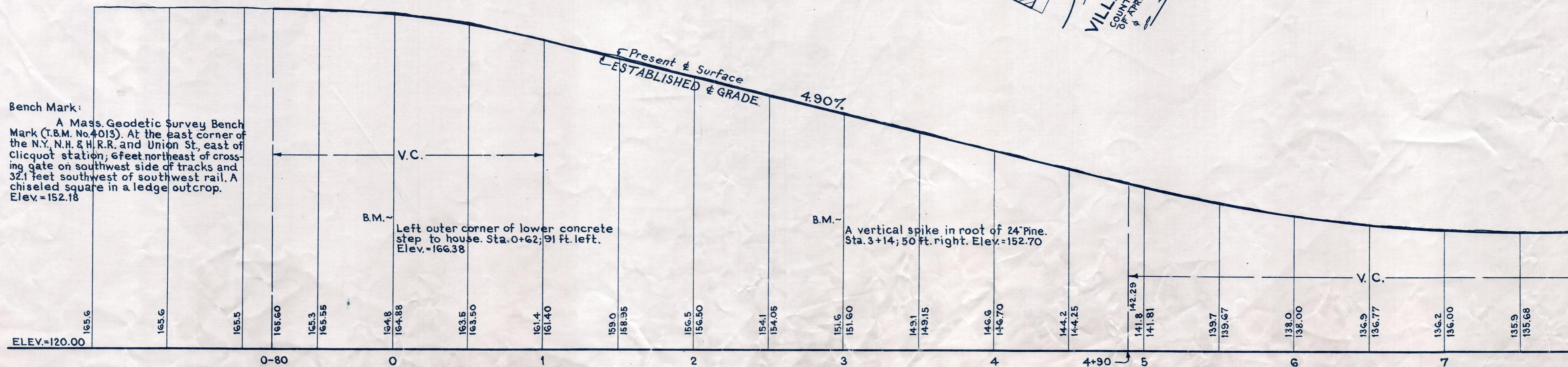
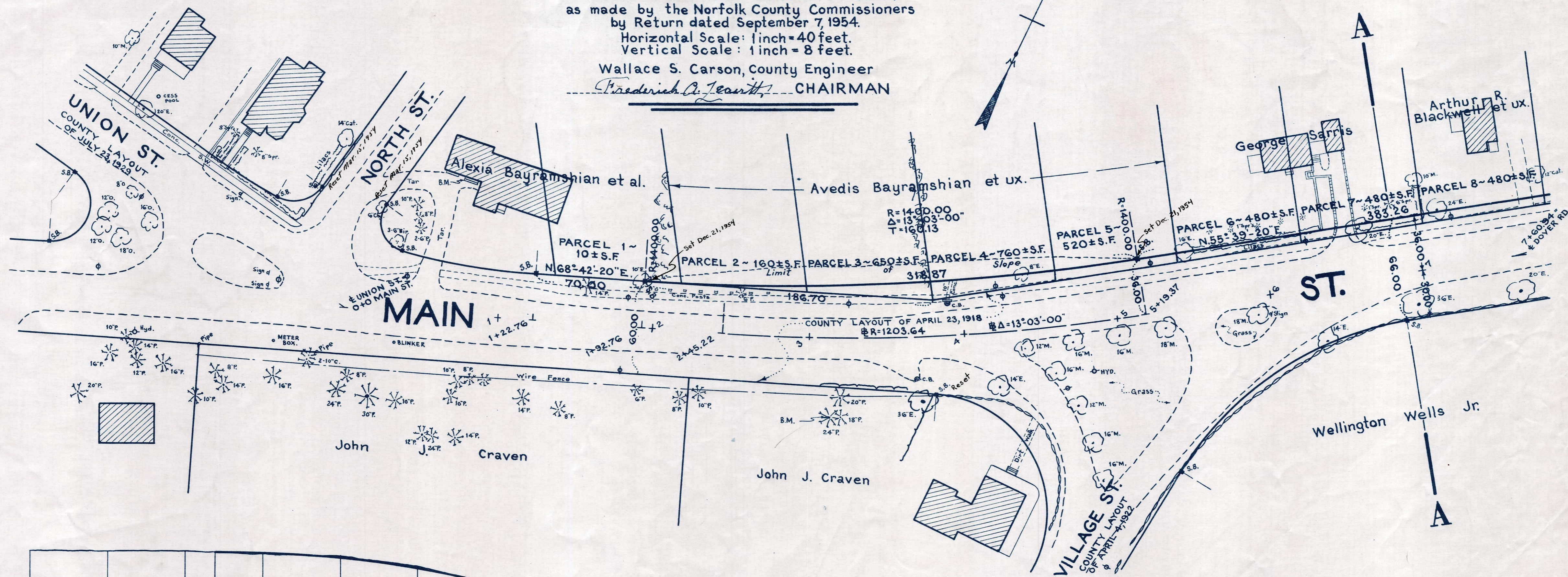


Plan and Profile
showing the Relocation and Widening
of a portion of
MAIN STREET, MILLIS

between
DOVER ROAD AND UNION STREET
as made by the Norfolk County Commissioners
by Return dated September 7, 1954.
Horizontal Scale: 1 inch = 40 feet.
Vertical Scale: 1 inch = 8 feet.
Wallace S. Carson, County Engineer
Frederick A. Leavitt, CHAIRMAN



Bench Mark:

A Mass. Geodetic Survey Bench Mark (I.B.M. No. 4013). At the east corner of the N.Y. N.H. & H.R.R. and Union St., east of Clicquot station, 6 feet northeast of crossing gate on southwest side of tracks and 32.1 feet southwest of southwest rail. A chiseled square in a ledge outcrop. Elev. = 152.18

V.C.

B.M. ~ Left outer corner of lower concrete step to house. Sta. 0+62; 91 ft. left. Elev. = 166.38

B.M. ~ A vertical spike in root of 24" Pine. Sta. 3+14; 50 ft. right. Elev. = 152.70