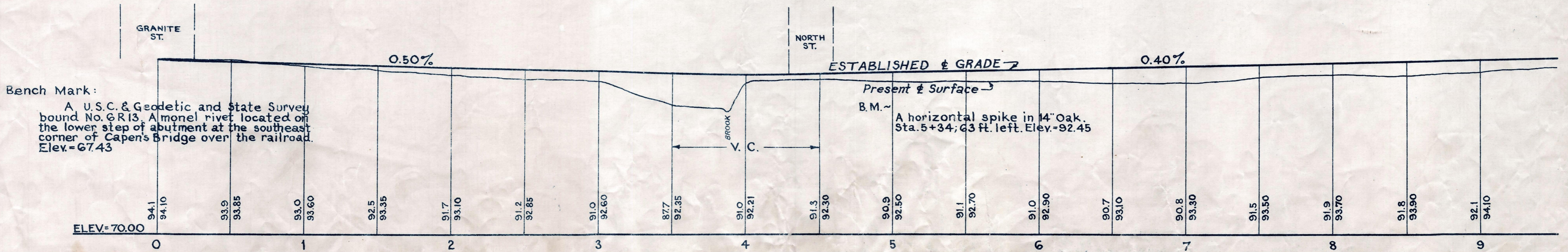
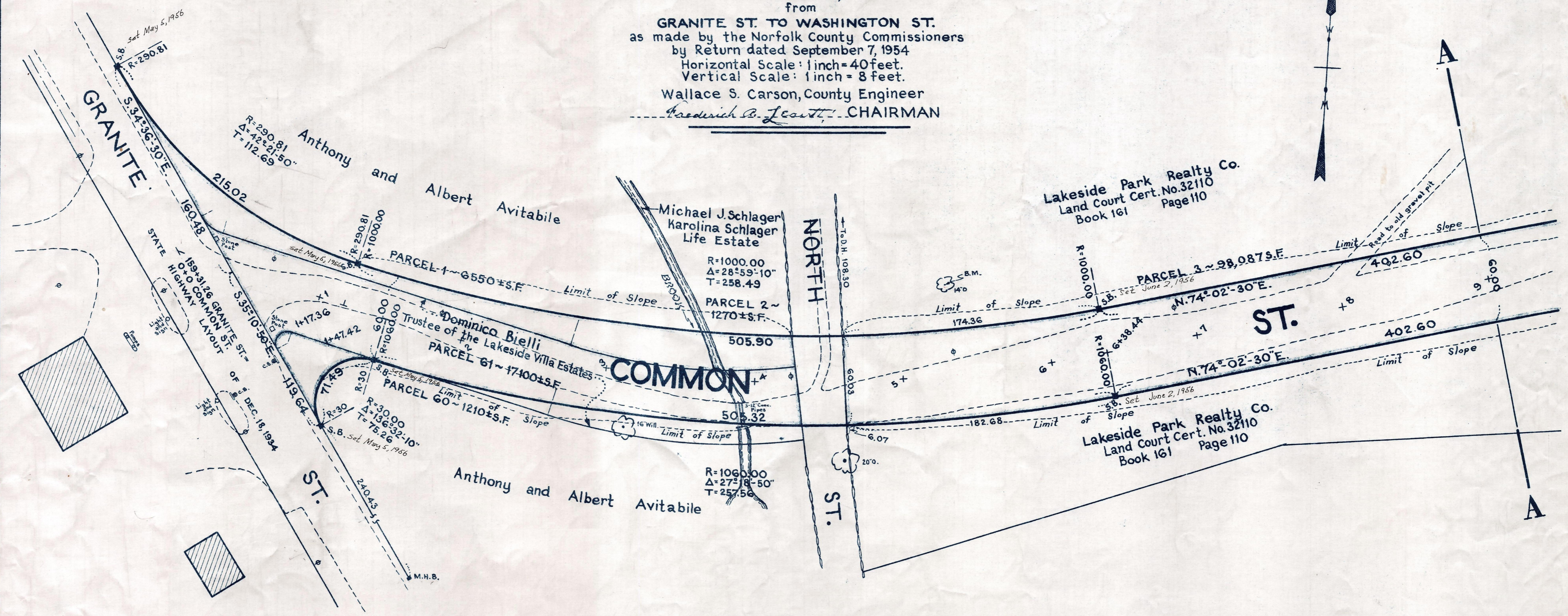
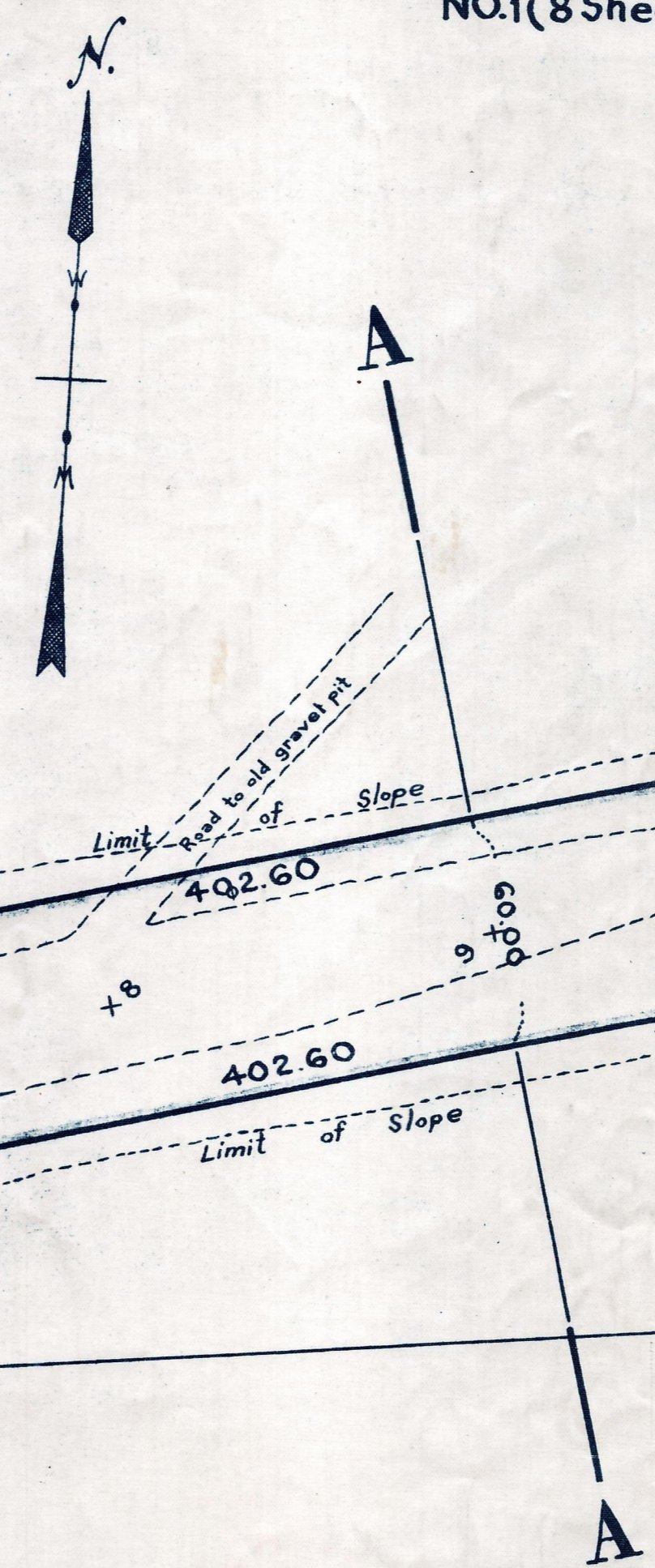


Plan and Profile  
showing the Relocation and Widening  
of  
**COMMON STREET, BRAINTREE**

from  
**GRANITE ST. TO WASHINGTON ST.**  
as made by the Norfolk County Commissioners  
by Return dated September 7, 1954  
Horizontal Scale: 1 inch = 40 feet.  
Vertical Scale: 1 inch = 8 feet.  
Wallace S. Carson, County Engineer  
*Fredrich B. Leavitt*, CHAIRMAN



Bench Mark:  
A U.S.C. & Geodetic and State Survey bound No. 6R13. A monel rivet located on the lower step of abutment at the southeast corner of Capen's Bridge over the railroad. Elev. = 67.43

Decree Rec. Oct. 1, 1954 3304/432-407-1 **FEE**  
 Date of Entry Oct. 11, 1954 (Rec. Oct. 28, 1954 3313/100)  
 Plan Rec. Plan Bk. 190 #1286-1293 of 1954