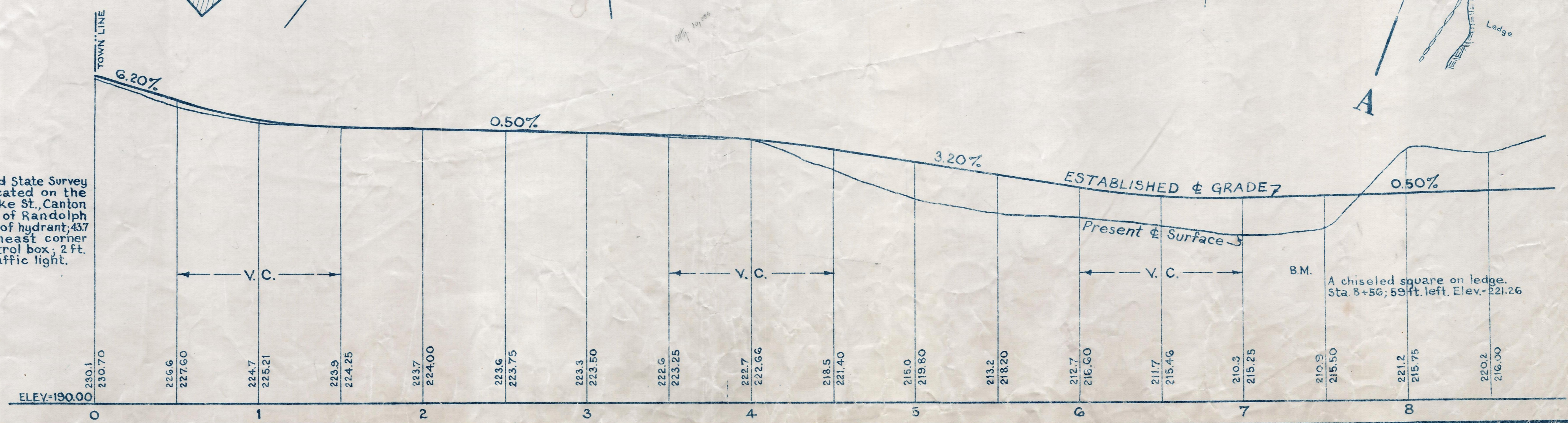
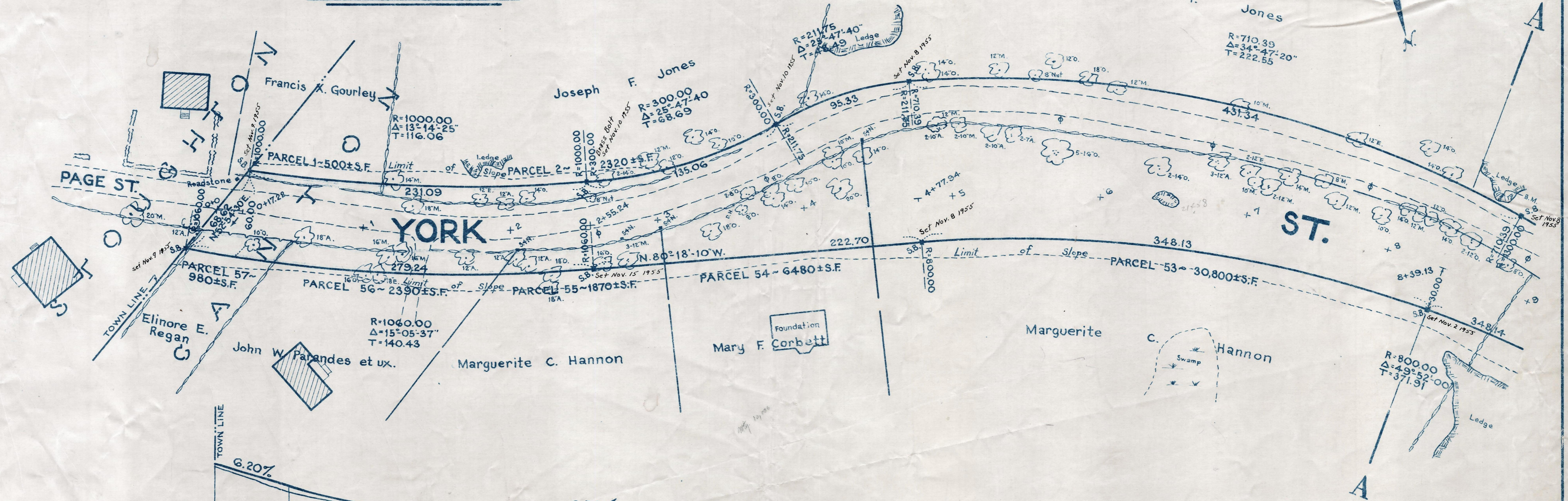


Plan and Profile  
showing the Relocation and Widening  
of  
**YORK STREET, CANTON**

between  
**THE STOUGHTON TOWN LINE AND RANDOLPH ST.**  
as made by the Norfolk County Commissioners  
by Return dated September 21, 1954  
Horizontal Scale: 1 inch = 40 feet.  
Vertical Scale: 1 inch = 8 feet.

Wallace S. Carson, County Engineer.  
Fredrich A. Leavitt, CHAIRMAN.



Bench Mark:  
A U.S.C. & G.S. and State Survey bound No. M 138E located on the west side of Turnpike St., Canton at the intersection of Randolph St.; 68.8 ft. northeast of hydrant; 437 ft. southeast of southeast corner of electromagnetic control box; 2 ft. south of base of traffic light. Elev. = 184.73