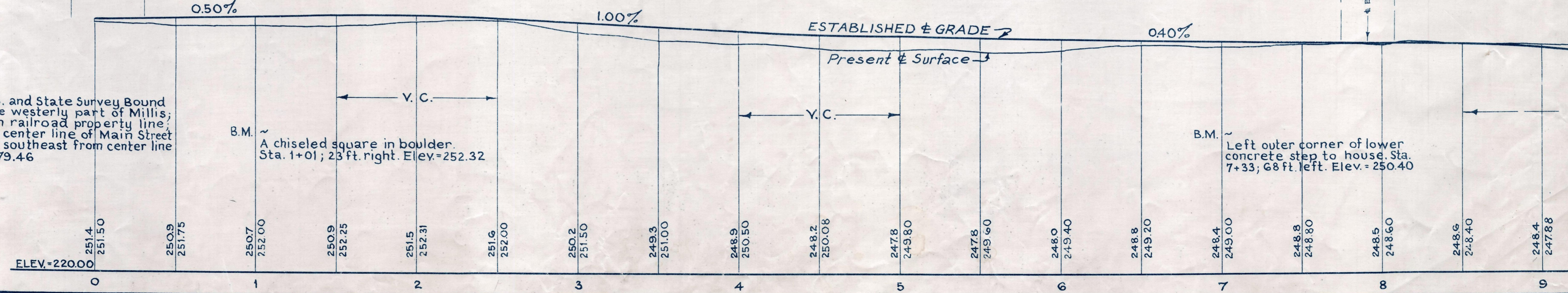
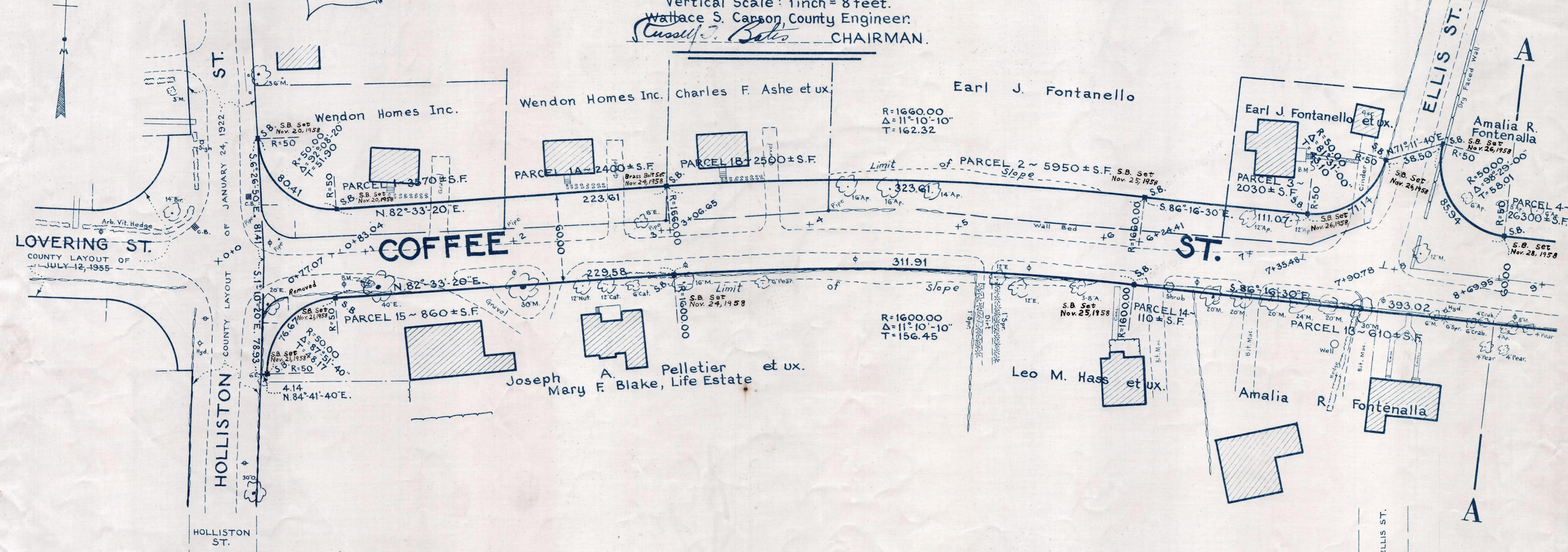
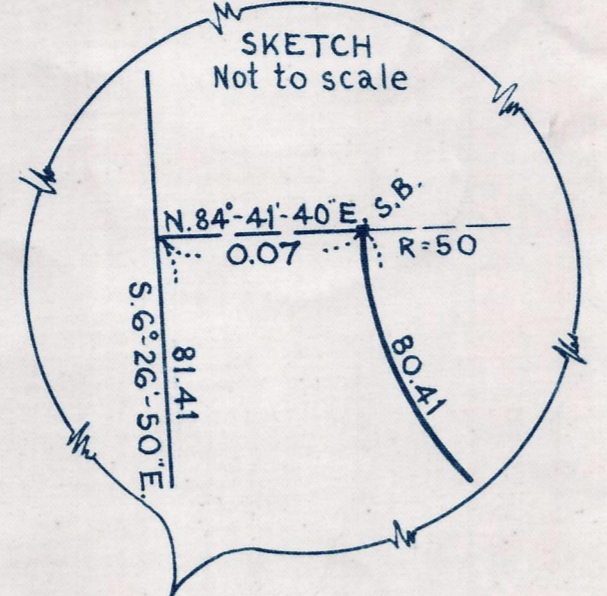


Plan and Profile
showing the Relocation and Widening
of
COFFEE STREET, MEDWAY

between
HOLLISTON ST. AND MAIN ST.
as made by the Norfolk County Commissioners
by Return dated April 2, 1957
Horizontal Scale: 1 inch = 40 feet.
Vertical Scale: 1 inch = 8 feet.
Wallace S. Carson, County Engineer.
Cassell J. Bates CHAIRMAN.



Bench Mark:
A U.S.C. & G.S. and State Survey Bound No. 52G located in the westerly part of Millis; 2 ft. east of fence on railroad property line, 1510 ft. southwest of center line of Main Street crossing and 297 ft. southeast from center line of Main St. Elev. = 179.46

B.M. ~ A chiseled square in boulder. Sta. 1+01; 23 ft. right. Elev. = 252.32

B.M. ~ Left outer corner of lower concrete step to house. Sta. 7+33; 68 ft. left. Elev. = 250.40