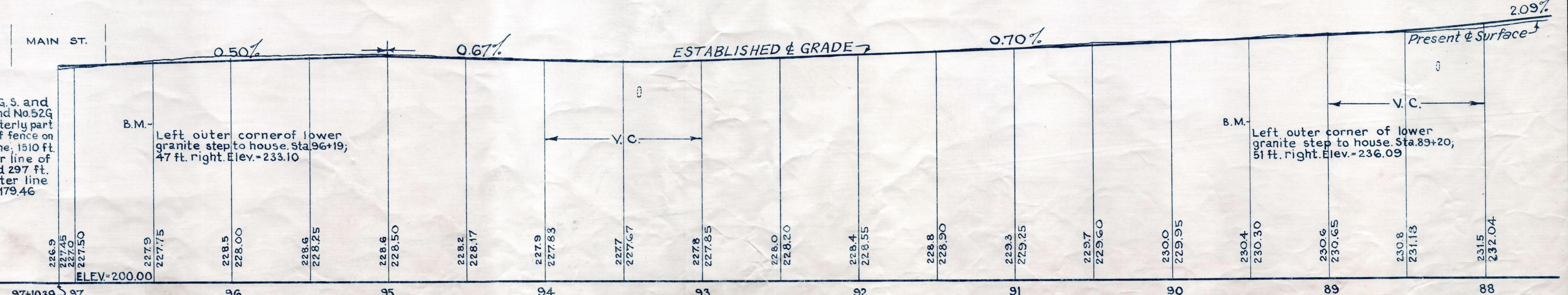
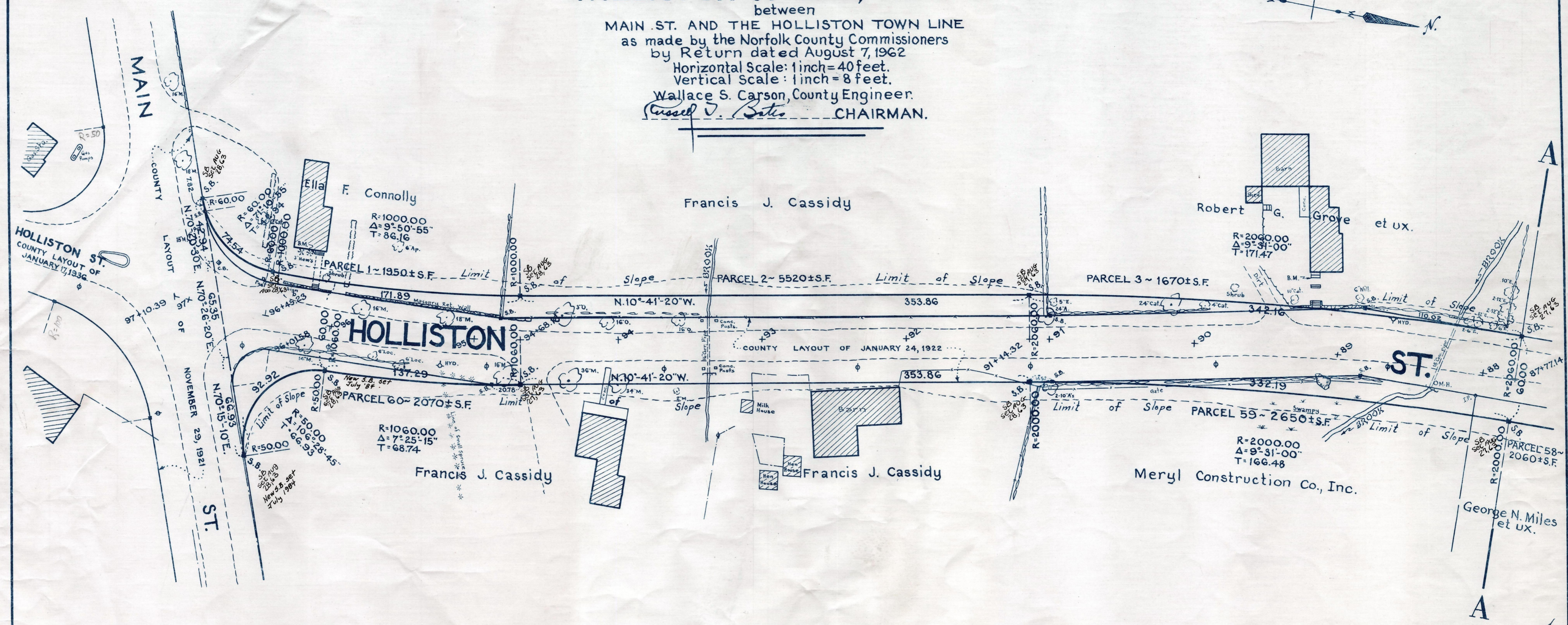
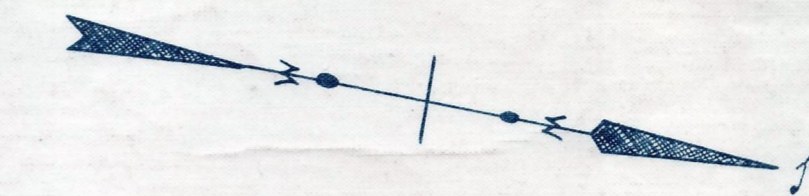


Plan and Profile  
showing the Relocation and Widening  
of a portion of  
**HOLLISTON STREET, MEDWAY**

between  
MAIN ST. AND THE HOLLISTON TOWN LINE  
as made by the Norfolk County Commissioners  
by Return dated August 7, 1962  
Horizontal Scale: 1 inch = 40 feet.  
Vertical Scale: 1 inch = 8 feet.  
Wallace S. Carson, County Engineer.  
*Cassell J. Bates* CHAIRMAN.



Bench Mark:  
A U.S.C. & G.S. and  
State Survey Bound No. 52G  
located in the westerly part  
of Millis; 2 ft. east of fence on  
railroad property line; 1510 ft.  
southwest of center line of  
Main St. crossing and 297 ft.  
southeast from center line  
of Main St. Elev. = 179.46

B.M. -  
Left outer corner of lower  
granite step to house. Sta. 96+19;  
47 ft. right. Elev. = 233.10

B.M. -  
Left outer corner of lower  
granite step to house. Sta. 89+20;  
51 ft. right. Elev. = 236.09