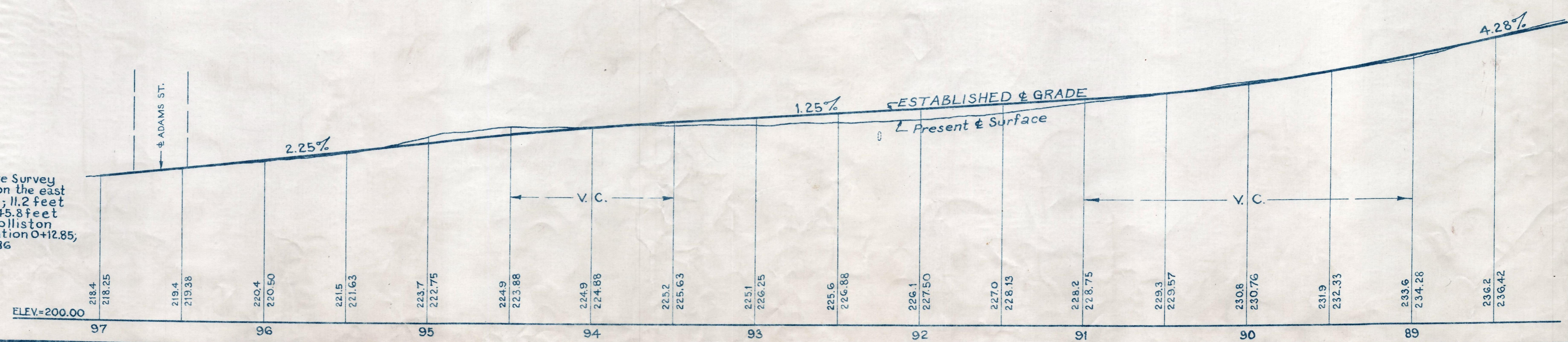
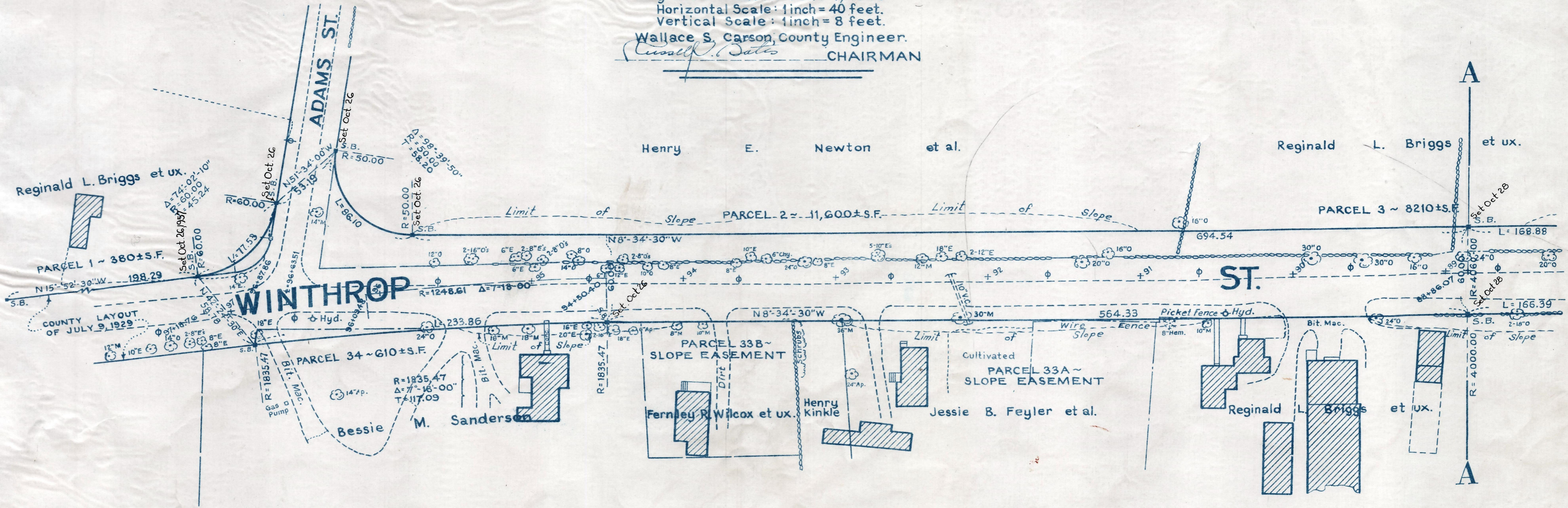
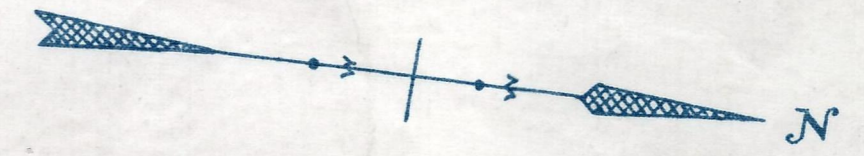


Plan and Profile
showing the Relocation and Widening
of a portion of
WINTHROP STREET. MEDWAY

between
ADAMS ST. AND THE HOLLISTON TOWN LINE
as made by the Norfolk County Commissioners
by Return dated June 7, 1955
Horizontal Scale: 1 inch = 40 feet.
Vertical Scale: 1 inch = 8 feet.
Wallace S. Carson, County Engineer.
Russell Bates CHAIRMAN



Bench Mark:
A U.S.C. & G. and State Survey
Bound No. 77-B located on the east
side of Summer Street, 11.2 feet
west from stone wall, 45.8 feet
south from Medway - Holliston
Town Bound and at Station 0+12.85,
21.18 ft. left. Elev. = 238.86