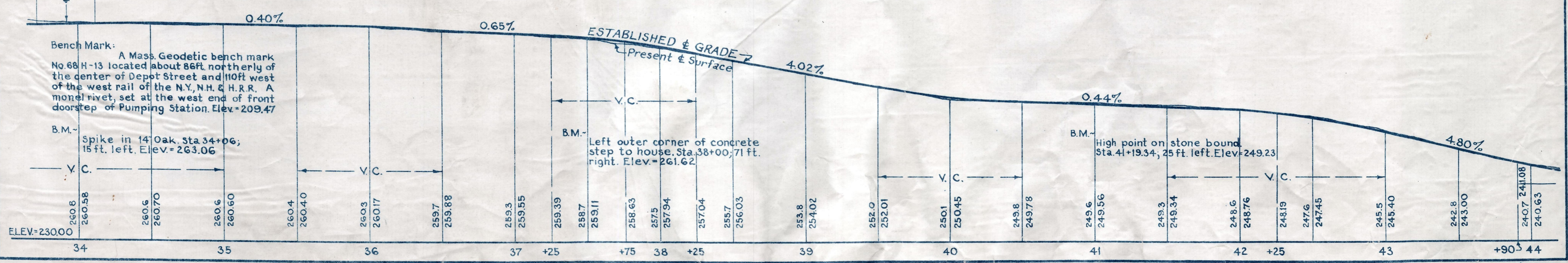
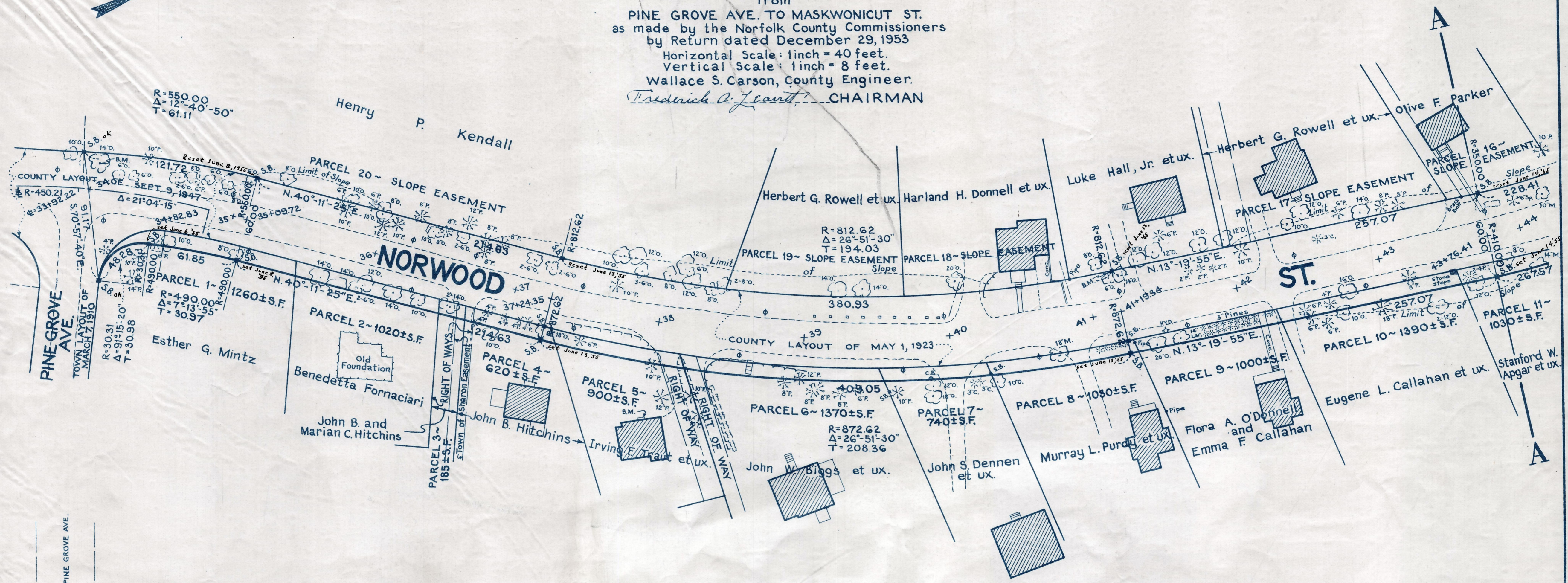
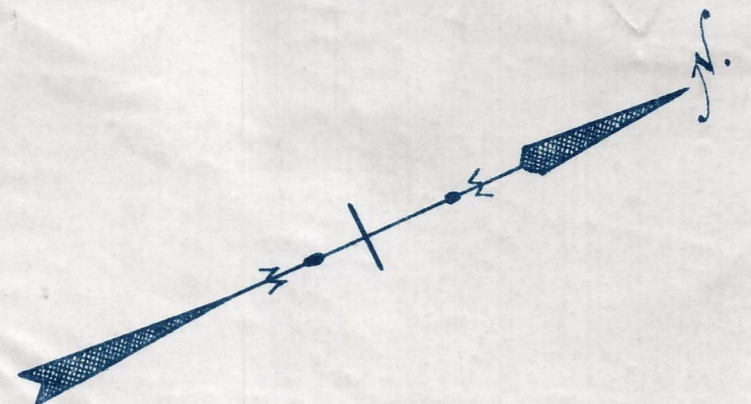


Plan and Profile  
showing the Relocation and Widening  
of a portion of  
**NORWOOD STREET, SHARON**  
from  
PINE GROVE AVE. TO MASKWONICUT ST.  
as made by the Norfolk County Commissioners  
by Return dated December 29, 1953  
Horizontal Scale: 1 inch = 40 feet.  
Vertical Scale: 1 inch = 8 feet.  
Wallace S. Carson, County Engineer.  
*Fredrick A. Leavitt*, CHAIRMAN



CRIF. ORDER RELOCATION BK. 3240 PG. 350  
TK6. BK. 3234 PG. 546, PL. BK. 182 PLS. 88 & 89 REC. JAN. 25, 1954