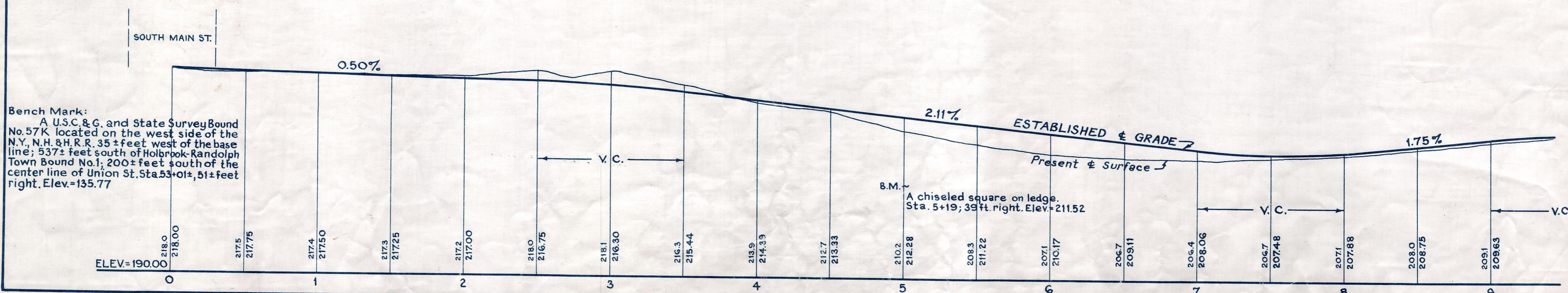
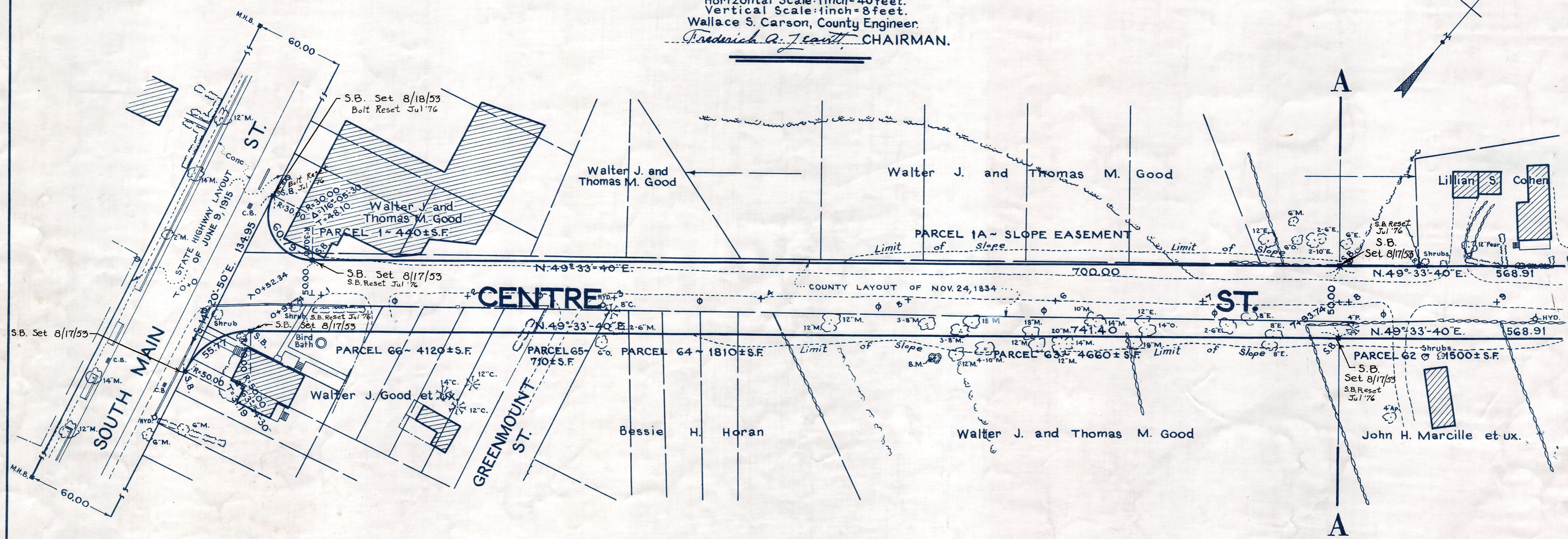


Plan and Profile  
showing the Relocation and Widening  
of  
**CENTRE STREET, RANDOLPH**

between  
**SOUTH MAIN ST. AND UNION ST.**  
as made by the Norfolk County Commissioners  
by Return dated June 9, 1953.  
Horizontal Scale: 1 inch = 40 feet.  
Vertical Scale: 1 inch = 8 feet.  
Wallace S. Carson, County Engineer.  
*Frederick A. J. South*, CHAIRMAN.



Bench Mark:  
A U.S.C. & G. and State Survey Bound  
No. 57K located on the west side of the  
N.Y., N.H. & H.R.R. 35± feet west of the base  
line; 537± feet south of Holbrook-Randolph  
Town Bound No. 1; 200± feet south of the  
center line of Union St. Sta. 53+01±, 51± feet  
right. Elev.=135.77

Entry July 1, 1953.