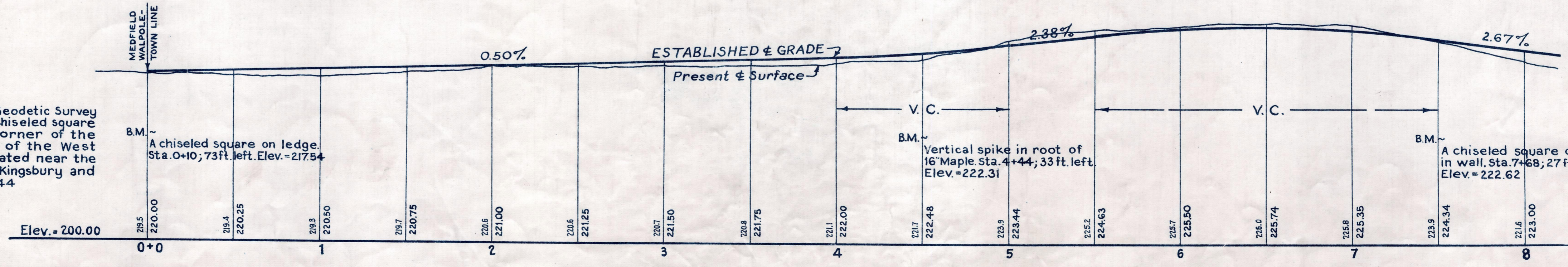
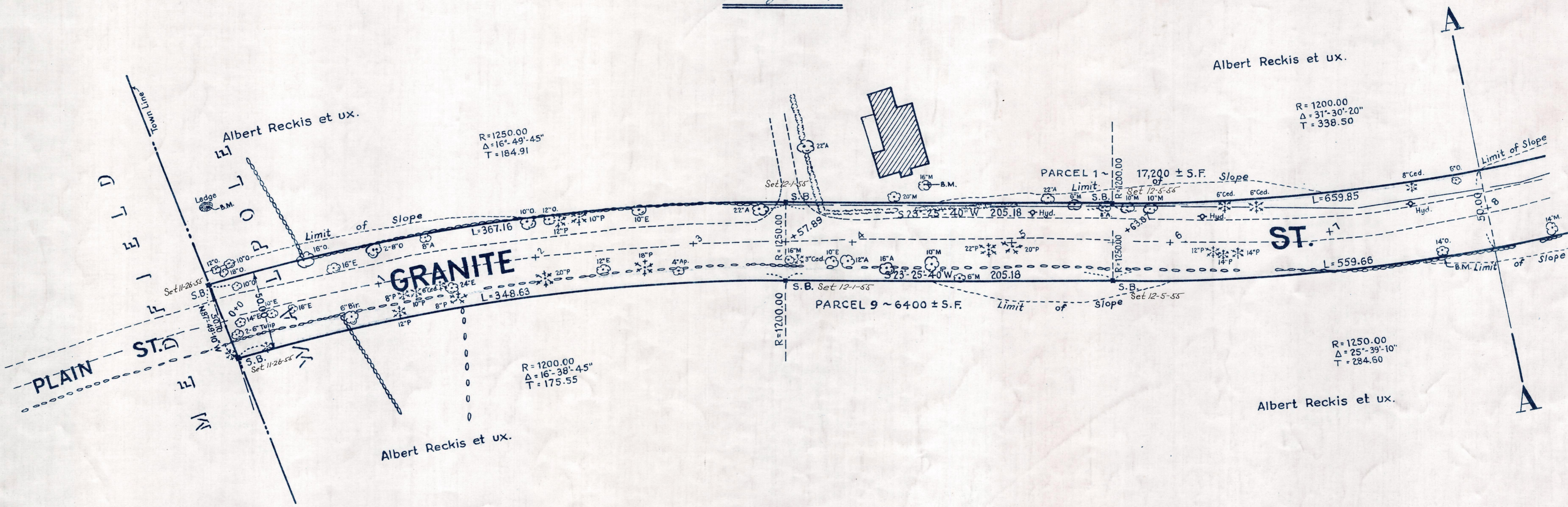
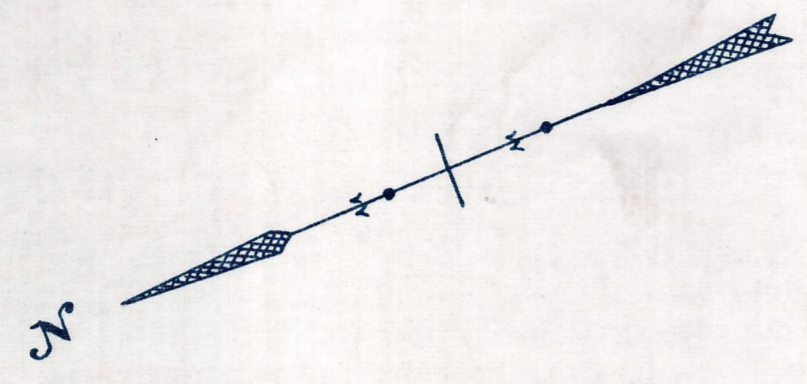


Plan and Profile  
showing the Relocation and Widening  
of  
**GRANITE STREET, WALPOLE**  
from the  
MEDFIELD TOWN LINE TO LINCOLN ROAD  
as made by the Norfolk County Commissioners  
by Return dated August 12, 1952.  
Horizontal Scale: 1 inch = 40 feet.  
Vertical Scale: 1 inch = 8 feet.  
Wallace S. Carson, County Engineer  
*Fredrich A. Leavitt* CHAIRMAN



Bench Mark:  
Massachusetts Geodetic Survey  
Bench Mark No. 68H-35. A chiseled square  
on the southeasterly corner of the  
foundation to standpipe of the West  
Walpole water tank located near the  
junction of Cedar, West Kingsbury and  
Plain Streets. Elev. = 234.44