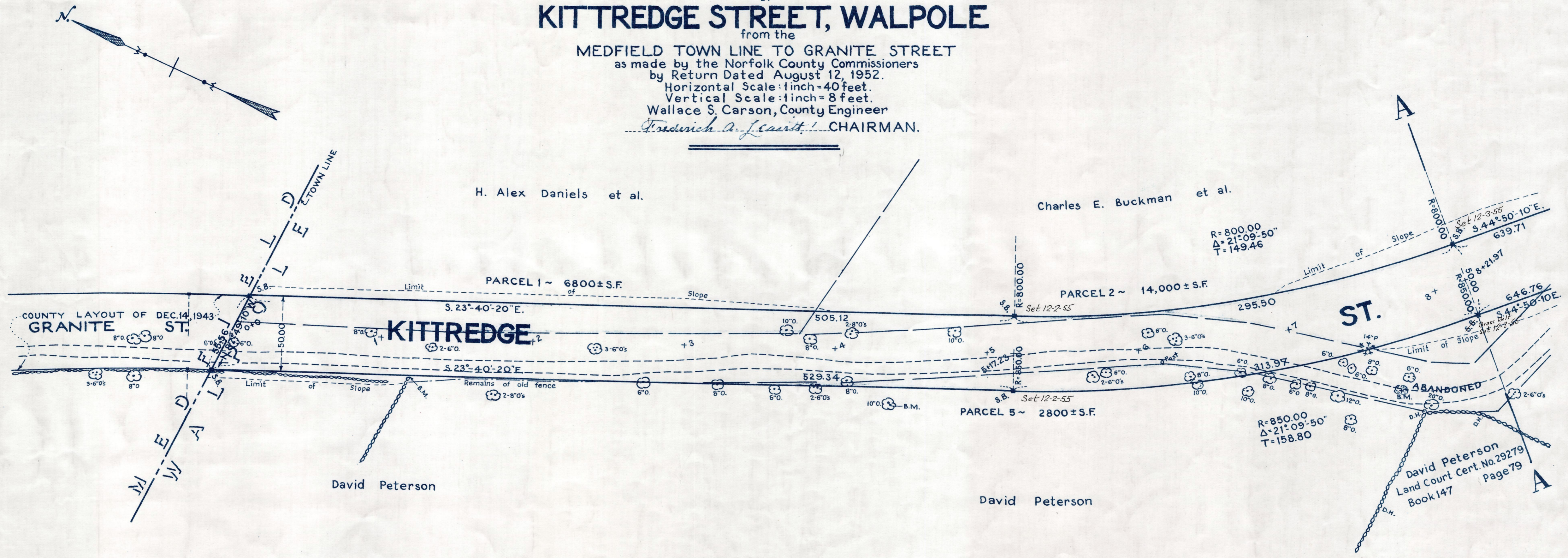


Plan and Profile
showing the Relocation and Widening
of
KITTREDGE STREET, WALPOLE

from the
MEDFIELD TOWN LINE TO GRANITE STREET
as made by the Norfolk County Commissioners
by Return Dated August 12, 1952.
Horizontal Scale: 1 inch = 40 feet.
Vertical Scale: 1 inch = 8 feet.
Wallace S. Carson, County Engineer
Fredrich A. Leavitt, CHAIRMAN.



Bench Mark:
Massachusetts Geodetic Survey
Bench Mark No. 68H-35. A chiseled square
on the southeasterly corner of the
foundation to standpipe of the West
Walpole water tank located near the
junction of Cedar, West, Kingsbury and
Plain Streets. Elev.=234.44

