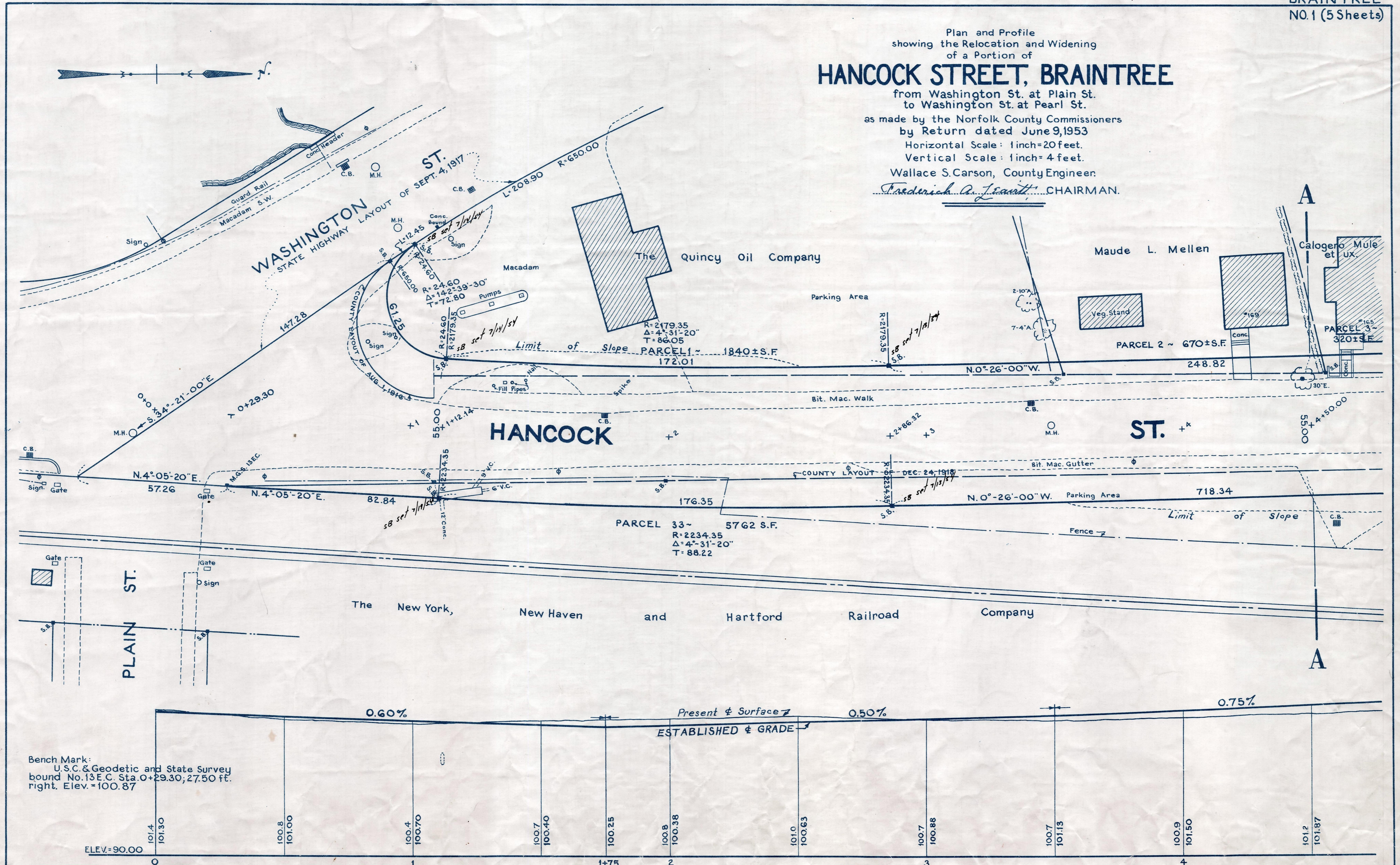


Plan and Profile  
showing the Relocation and Widening  
of a Portion of  
**HANCOCK STREET, BRAINTREE**

from Washington St. at Plain St.  
to Washington St. at Pearl St.  
as made by the Norfolk County Commissioners  
by Return dated June 9, 1953  
Horizontal Scale: 1 inch = 20 feet.  
Vertical Scale: 1 inch = 4 feet.  
Wallace S. Carson, County Engineer.  
*Frederick A. Leavitt*, CHAIRMAN.



Bench Mark:  
U.S.C. & Geodetic and State Survey  
bound No. 13 E.C. Sta. 0+29.30; 27.50 ft.  
right. Elev. = 100.87

FEE.