

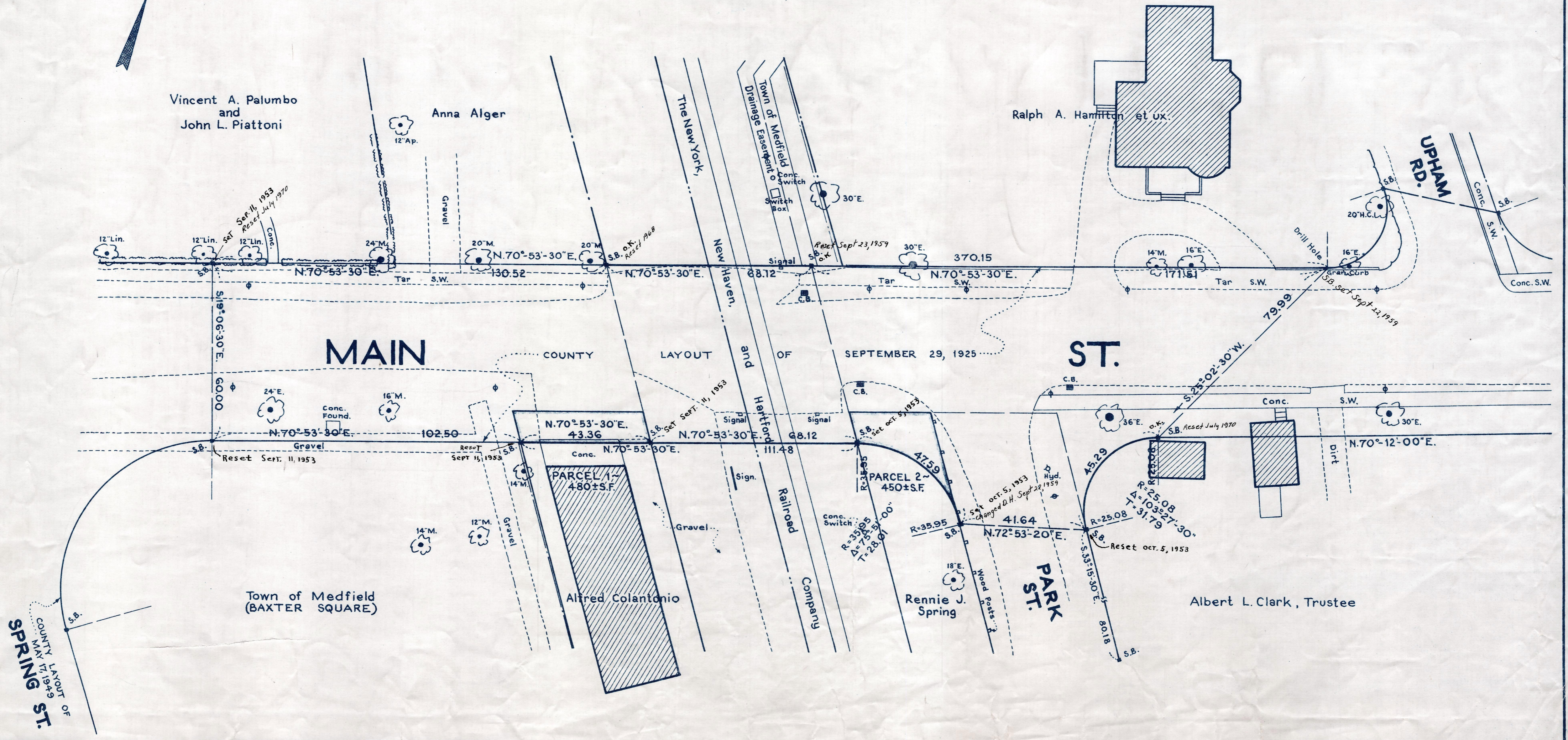
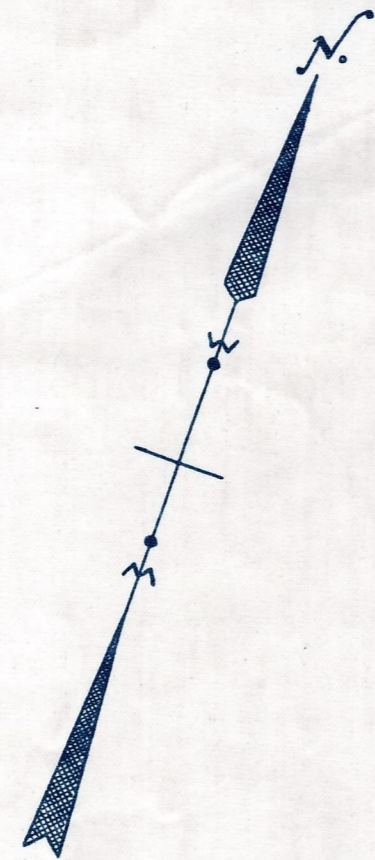
Plan showing the Relocation and Widening  
of a Portion of  
**MAIN STREET, MEDFIELD**  
between  
**SPRING STREET AND UPHAM ROAD**

as made by the Norfolk County Commissioners  
by Return Dated August 19, 1952.

Scale: 1 inch = 20 feet.

Wallace S. Carson, County Engineer.

*Fredrick A. Jewitt* CHAIRMAN.



CRTF. ORDER RELOCATION BK. 3130 PG. 588, NOV. 19, 1952  
TKG. BK. 3109 PG. 188 PL. BK. 171 PL. 1063, REC. Aug. 27, 1952