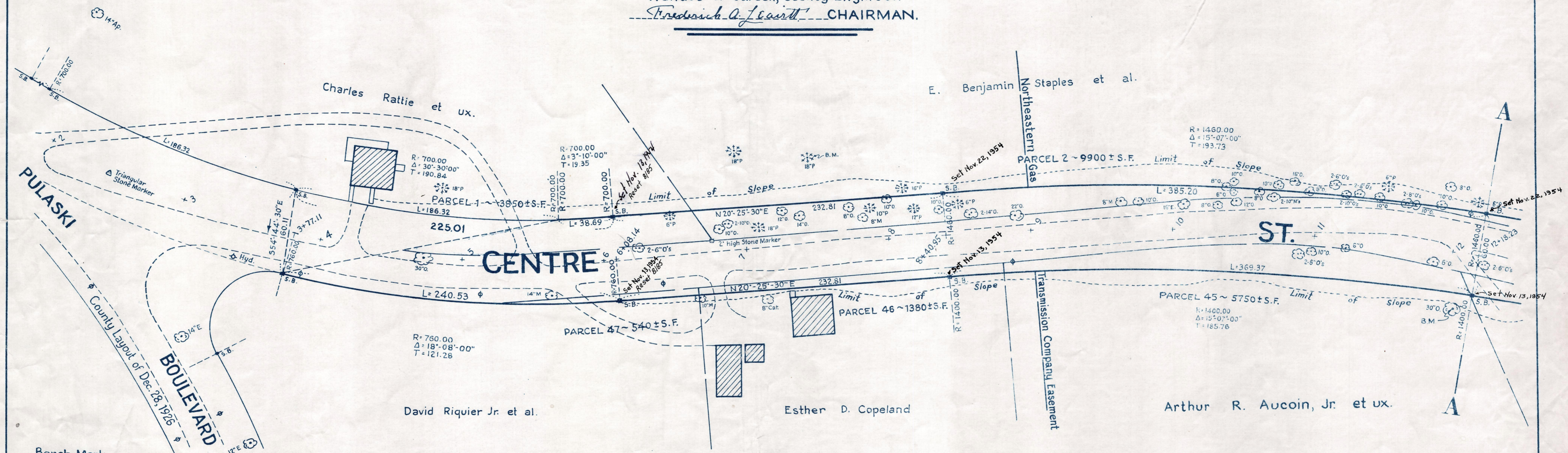
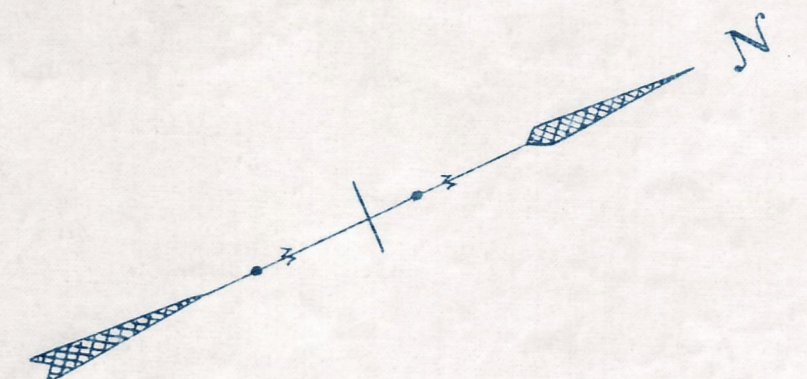


Plan and Profile
showing the Relocation and Widening
of
CENTRE STREET, BELLINGHAM

between
PULASKI BOULEVARD AND SOUTH MAIN ST.
as made by the Norfolk County Commissioners
by Return dated December 1, 1953.
Horizontal Scale: 1 inch = 40 feet.
Vertical Scale: 1 inch = 8 feet.
Wallace S. Carson, County Engineer.
Frederick A. Leavitt CHAIRMAN.



Bench Mark:
A Massachusetts State Survey
T. B. M. No. 3077, located 225 ft. southwest
of the intersection of Centre Street and
South Main Street. A monel rivet in easterly
end of concrete head wall on northerly
side of South Main Street. Elev. = 337.68

