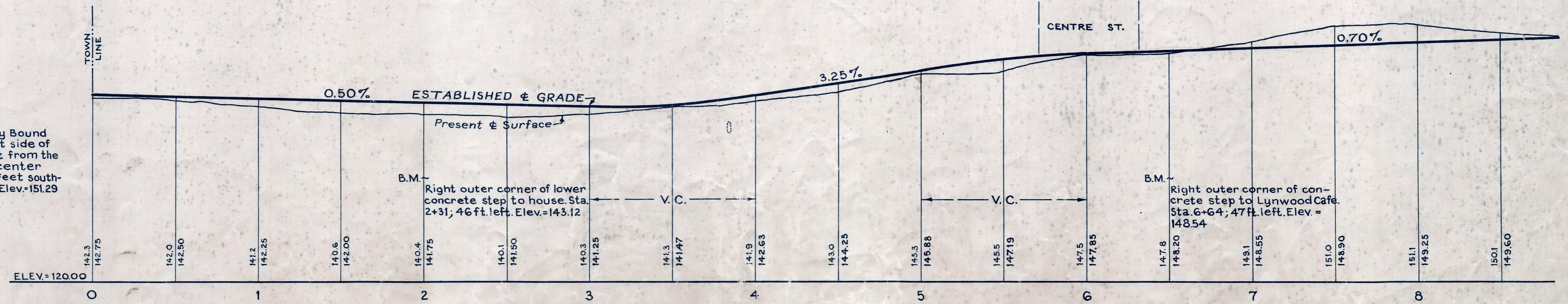
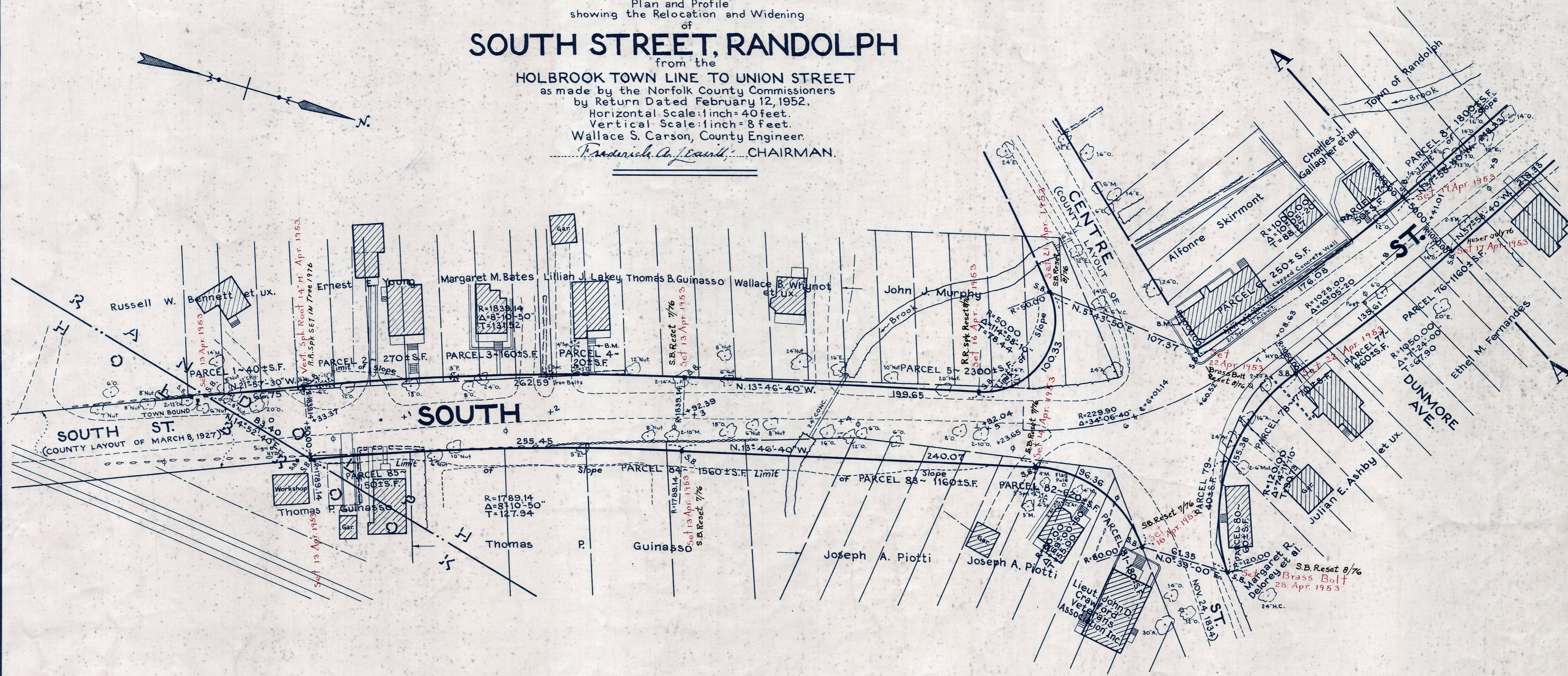
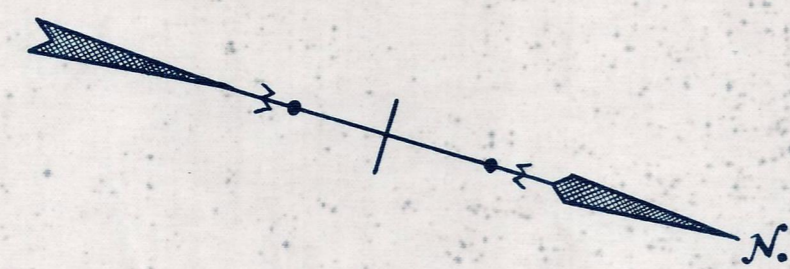


Plan and Profile
showing the Relocation and Widening
of
SOUTH STREET, RANDOLPH

from the
HOLBROOK TOWN LINE TO UNION STREET
as made by the Norfolk County Commissioners
by Return Dated February 12, 1952.
Horizontal Scale: 1 inch = 40 feet.
Vertical Scale: 1 inch = 8 feet.
Wallace S. Carson, County Engineer.
F. Frederick, Jr., Chairman.



Bench Mark -
A U.S.C. & G. and State Survey Bound
No. 57N located on the west side of
the N.Y., N.H. & H.R.R. 31.8 feet from the
west rail, 415 south of the center
line of South St. and 118.5 feet south-
west of semaphore No. 69. Elev. 151.29