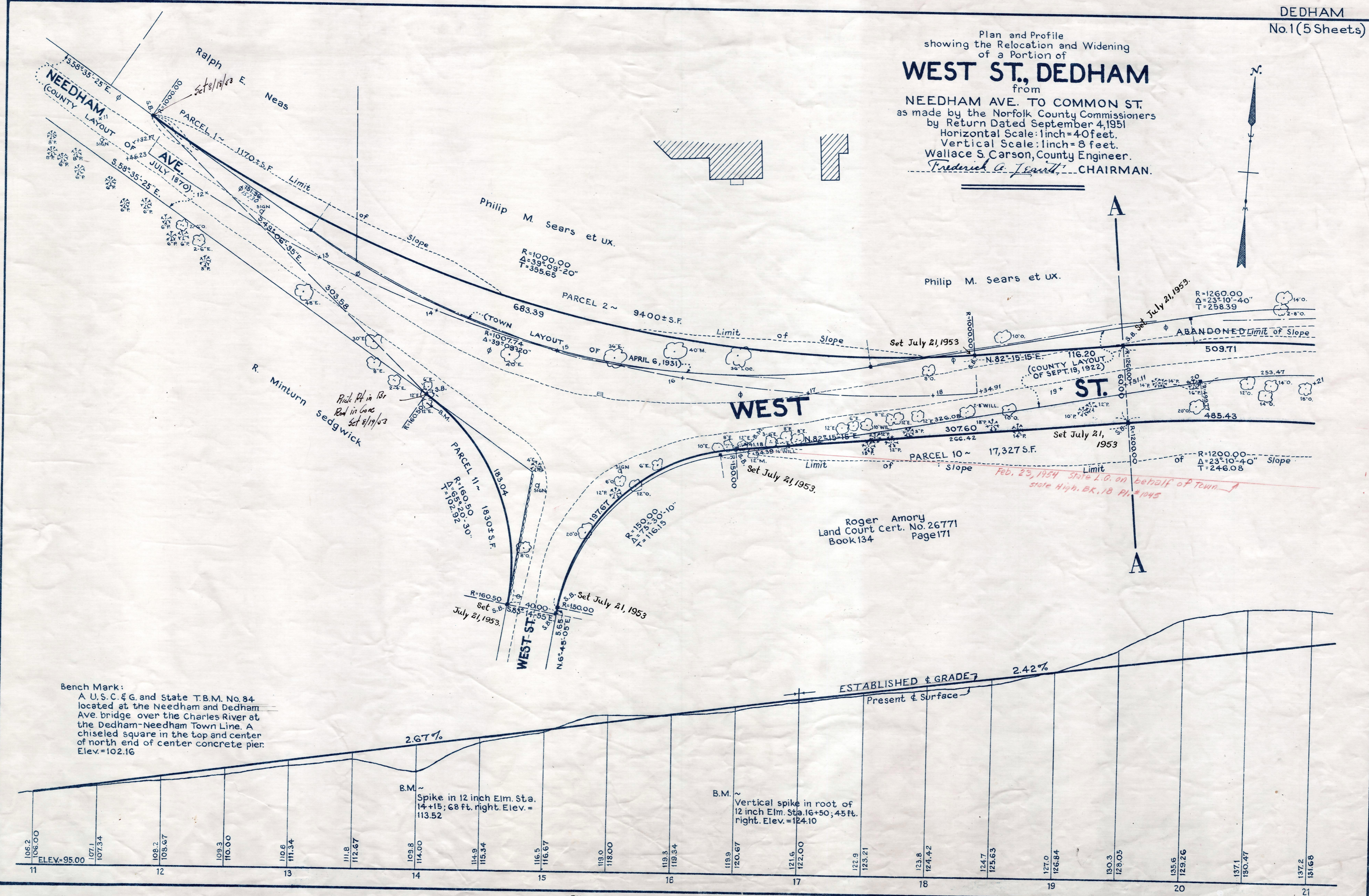
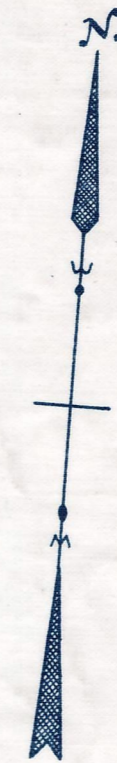


Plan and Profile  
showing the Relocation and Widening  
of a Portion of  
**WEST ST., DEDHAM**  
from  
NEEDHAM AVE. TO COMMON ST.  
as made by the Norfolk County Commissioners  
by Return Dated September 4, 1951  
Horizontal Scale: 1 inch = 40 feet.  
Vertical Scale: 1 inch = 8 feet.  
Wallace S. Carson, County Engineer.  
*Frederick A. Jewett*, CHAIRMAN.



Bench Mark:  
A U.S.C. & G. and State T.B.M. No. 84  
located at the Needham and Dedham  
Ave. bridge over the Charles River at  
the Dedham-Needham Town Line. A  
chiseled square in the top and center  
of north end of center concrete pier.  
Elev. = 102.16

CRTF. ORDER RELOCATION BK 3080 PG 432 MAY 1, 1952  
TKG. BK 3034 PG 40; PL BK 167, PLS 1148 TO 1152 INCL. REC. SEPT. 28, 1951

Date of Entry April 17, 1952