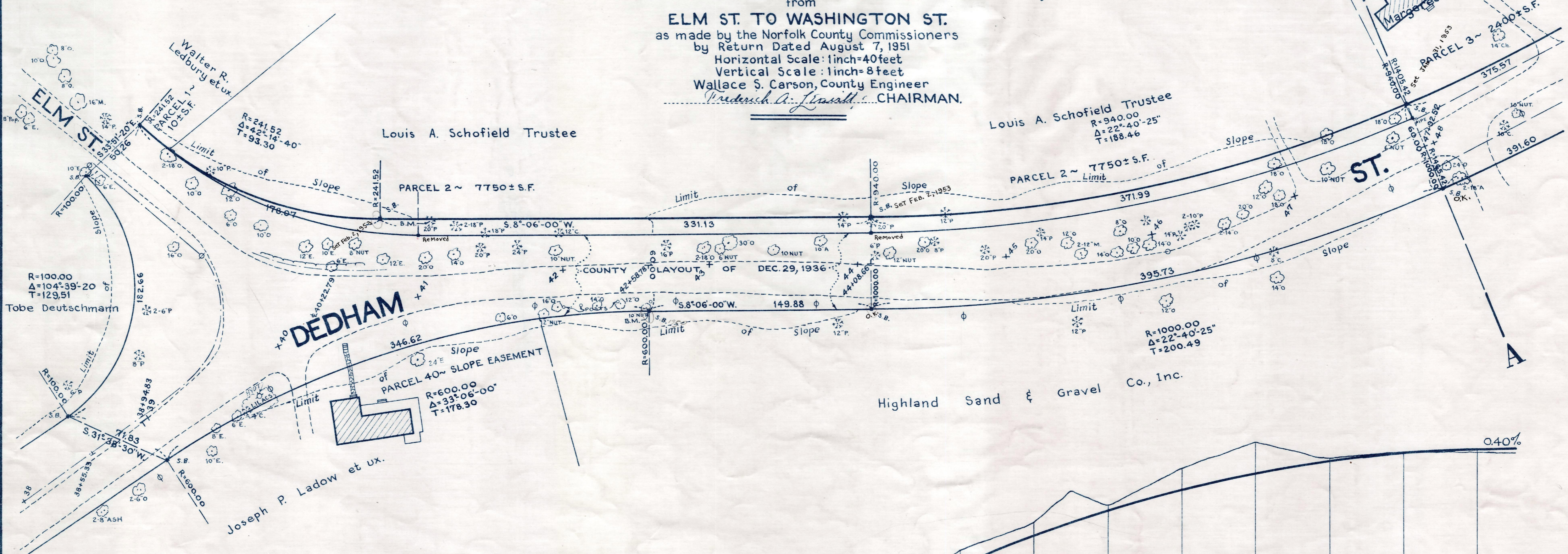
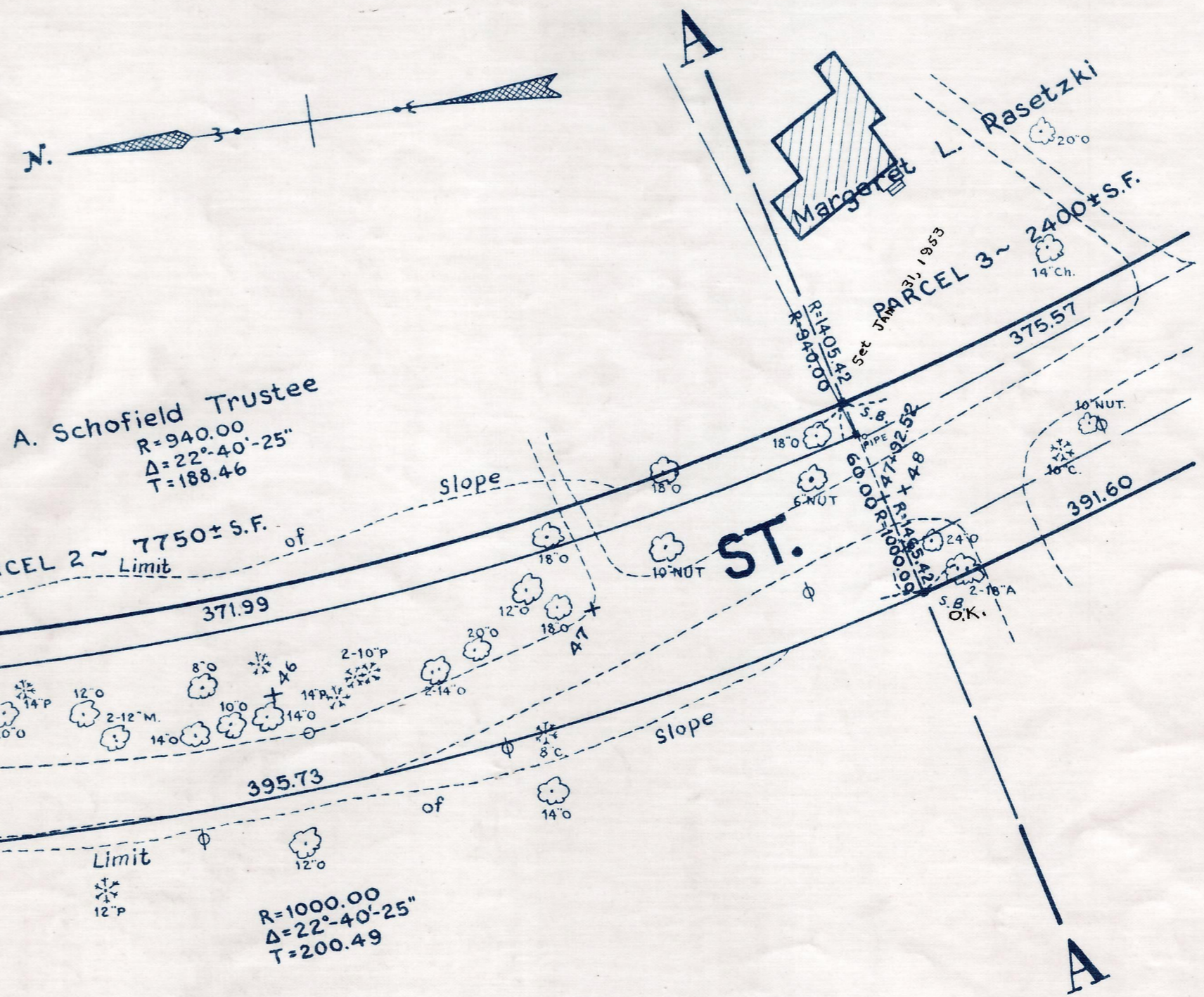


Plan and Profile
showing the Relocation and Widening
of a Portion of
DEDHAM ST., CANTON
from
ELM ST. TO WASHINGTON ST.
as made by the Norfolk County Commissioners
by Return Dated August 7, 1951
Horizontal Scale: 1 inch=40 feet
Vertical Scale: 1 inch=8 feet
Wallace S. Carson, County Engineer
Frederick A. Smith CHAIRMAN.



Bench Mark:
A U.S. Coast and Geodetic Survey
bound No.(R) located on the N.Y.,
N.H., & H.R.R. at bridge No.12.77
over the Neponset River on the
southeast end of the southwest
abutment; 332.5 feet north of
milepost B-12 and 8 feet south-
east of the southeast rail. Elev.=
48.37

