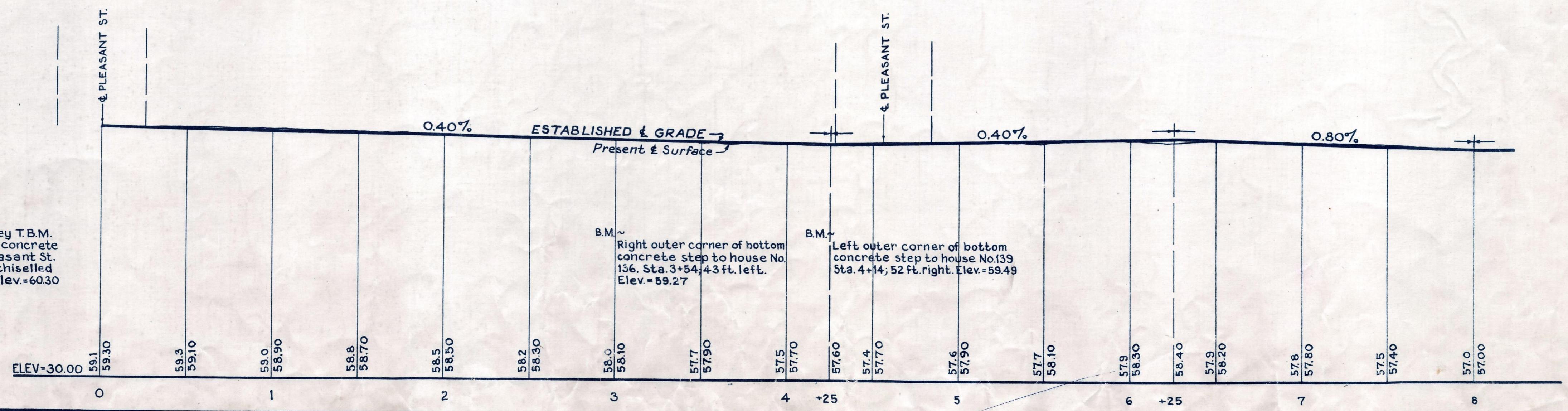
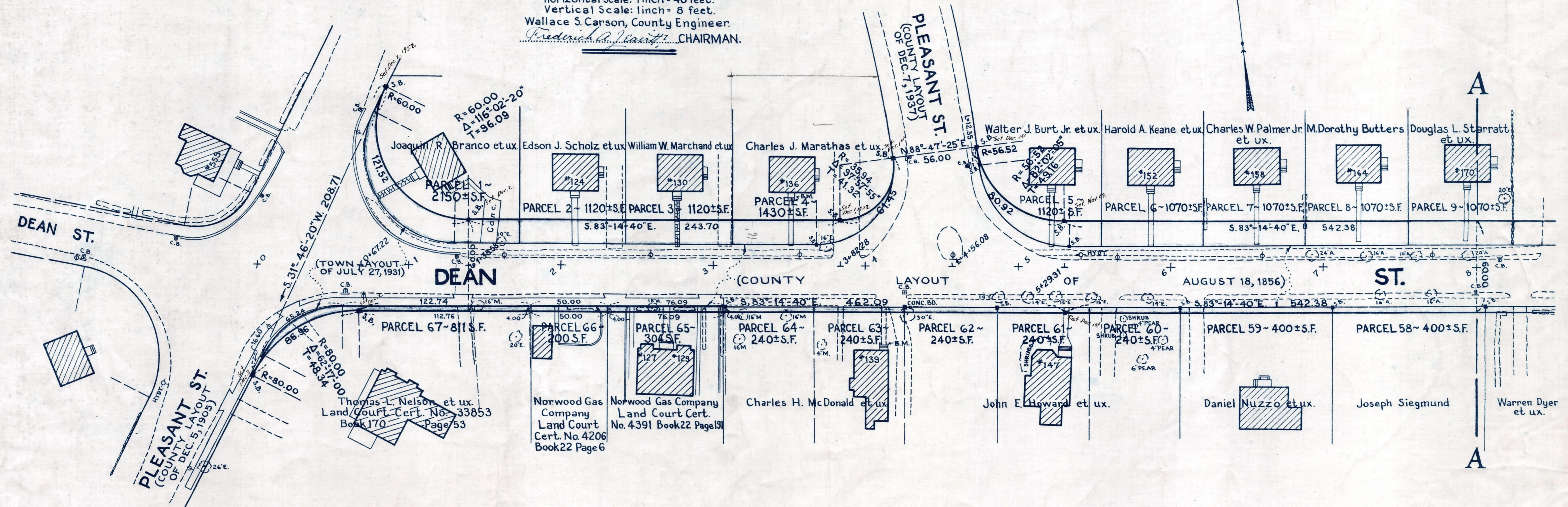
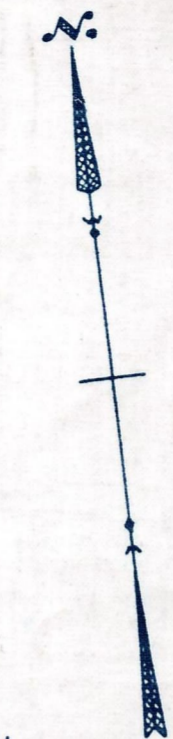


Plan and Profile  
showing the Relocation and Widening  
of a Portion of  
**DEAN STREET, NORWOOD**  
between  
**PLEASANT STREET AND NEPONSET STREET**  
as made by the Norfolk County Commissioners  
by Return dated June 5, 1951  
Horizontal Scale: 1 inch = 40 feet.  
Vertical Scale: 1 inch = 8 feet.  
Wallace S. Carson, County Engineer.  
*Fredrick A. ...* CHAIRMAN.



Bench Mark:  
Mass. Geodetic Survey T.B.M.  
No. 23. On the northeast end of concrete  
fence, on southeast side of Pleasant St.  
bridge over Neponset River. A chiselled  
square in center of end post. Elev. = 60.30