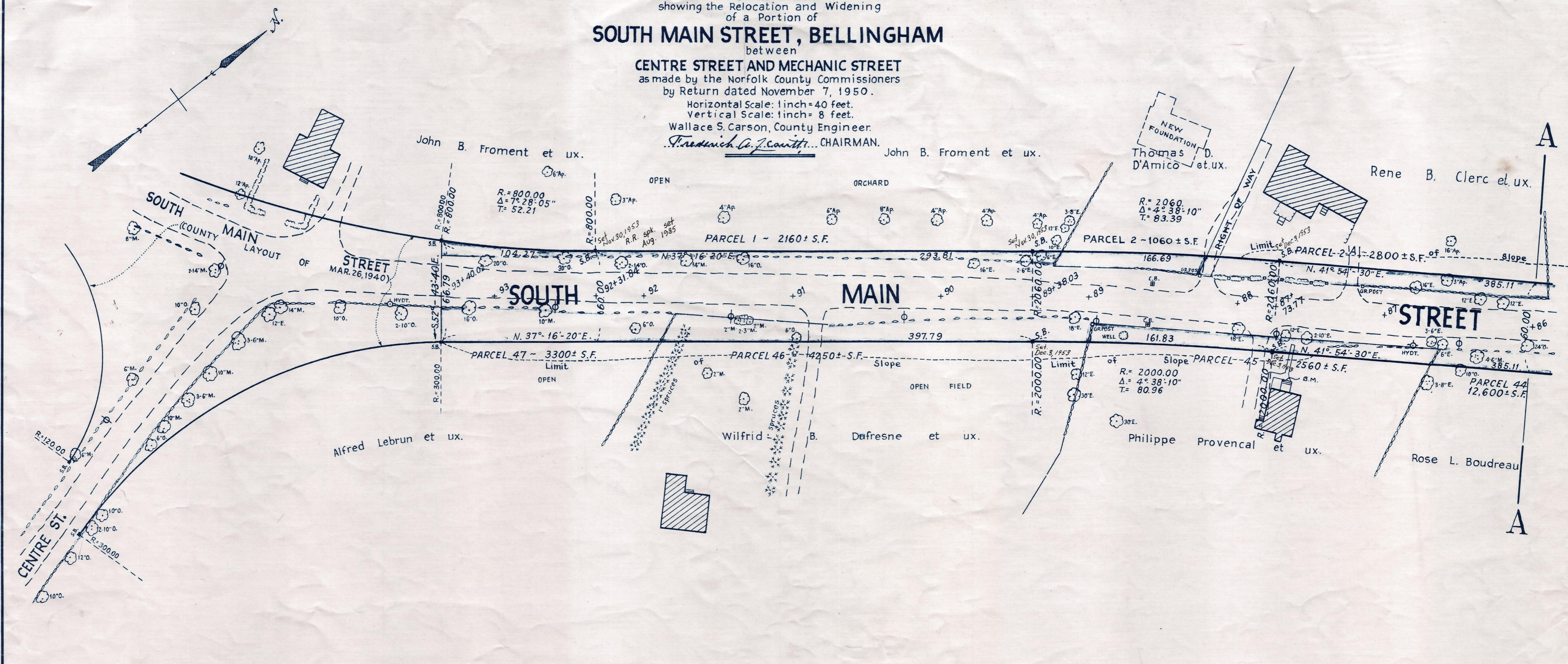


Plan and Profile
showing the Relocation and Widening
of a Portion of
SOUTH MAIN STREET, BELLINGHAM
between

CENTRE STREET AND MECHANIC STREET
as made by the Norfolk County Commissioners
by Return dated November 7, 1950.

Horizontal Scale: 1 inch = 40 feet.
Vertical Scale: 1 inch = 8 feet.
Wallace S. Carson, County Engineer.
Frederick A. J. Condit, CHAIRMAN.



Bench Mark:
U.S.C. & Geodetic Survey and State Survey
T.B.M. No. 3077, located 225 ft. southwest of
the intersection of Centre Street. A metal
rivet in easterly end of concrete head
wall on northerly side of South Main
Street. Elev. = 337.68

