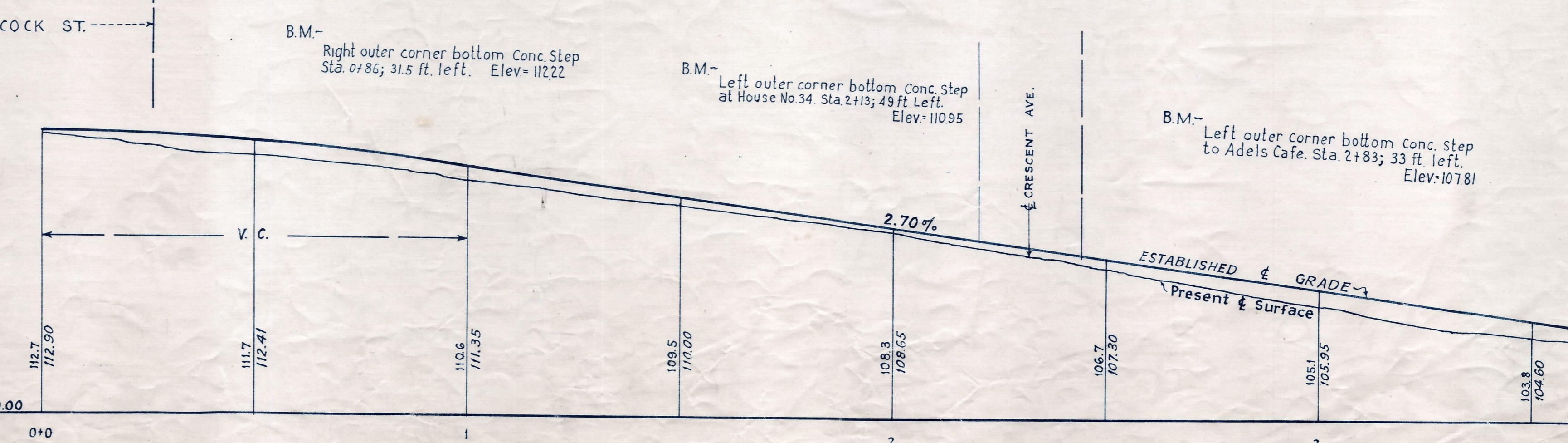
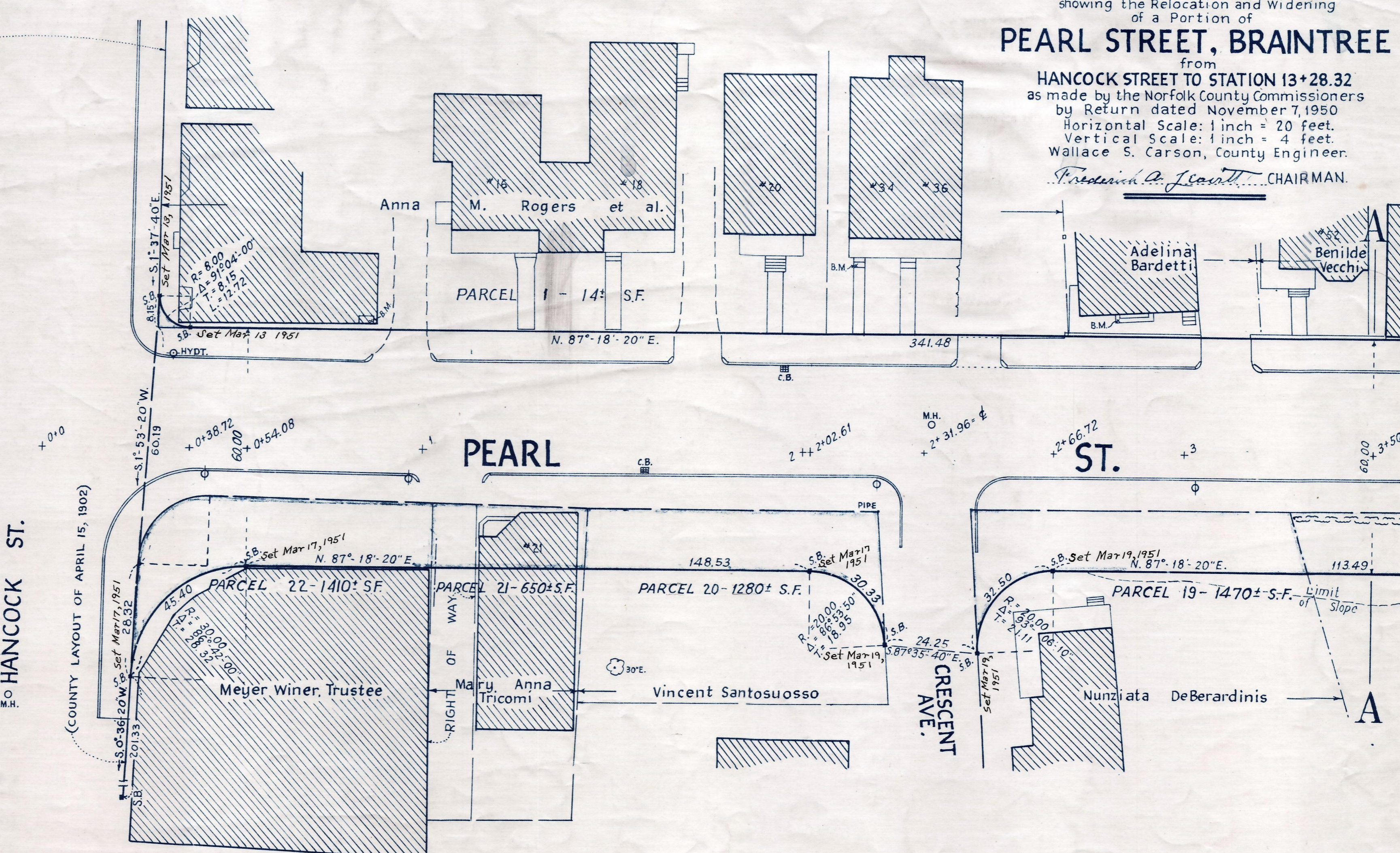
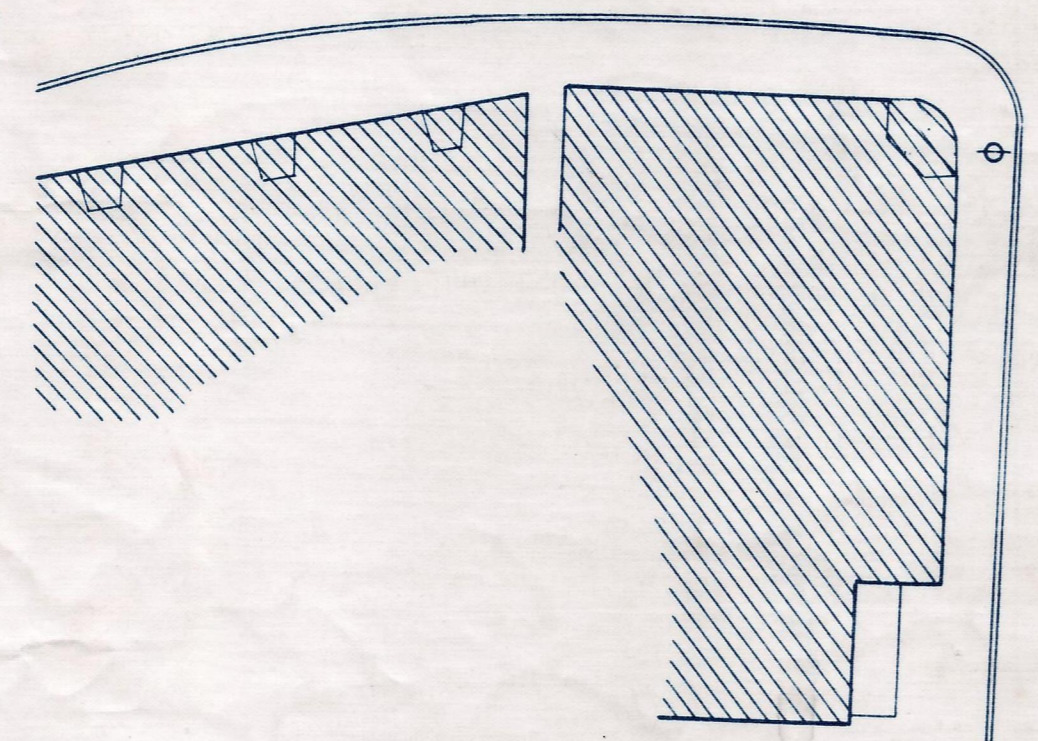
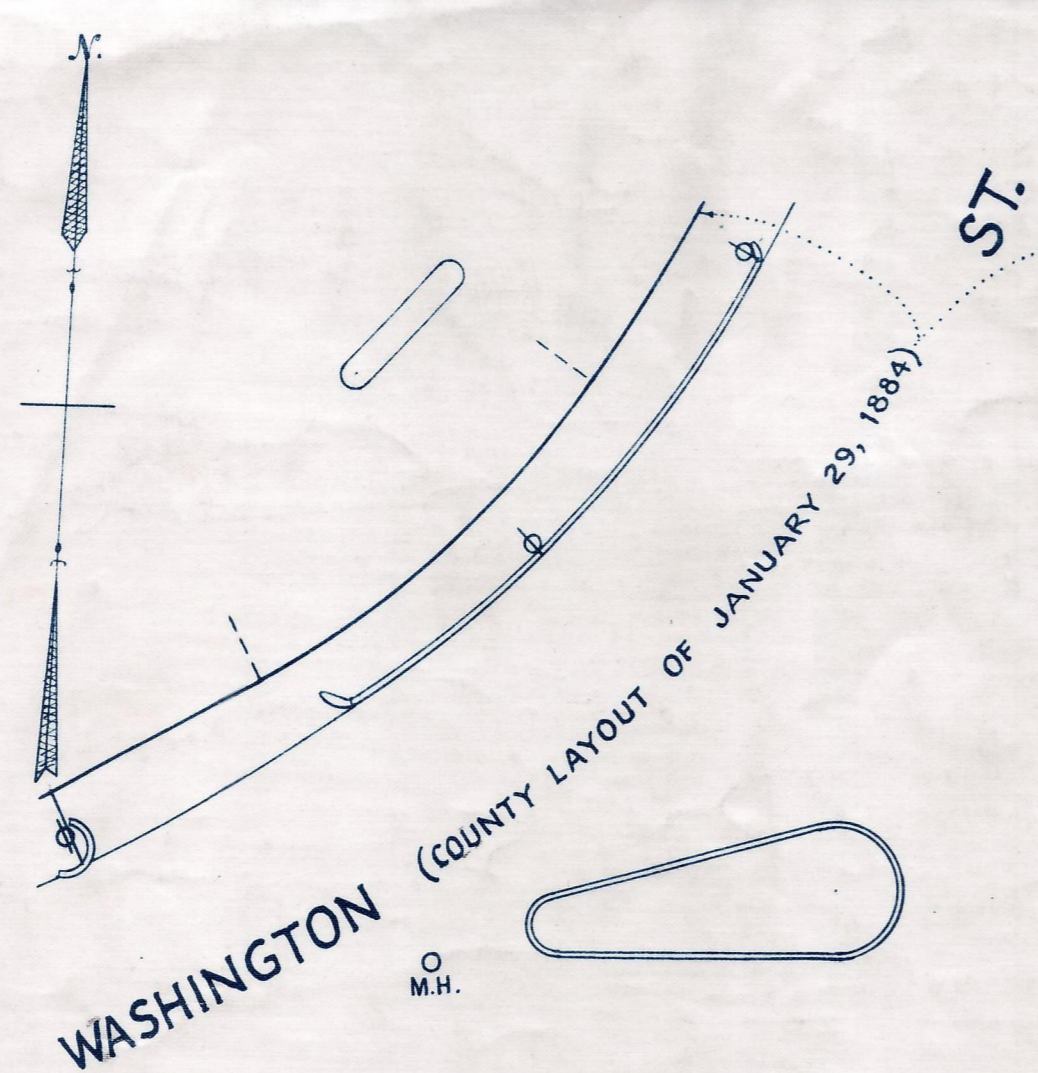


Plan and Profile
showing the Relocation and Widening
of a Portion of
PEARL STREET, BRAINTREE
from
HANCOCK STREET TO STATION 13+28.32
as made by the Norfolk County Commissioners
by Return dated November 7, 1950
Horizontal Scale: 1 inch = 20 feet.
Vertical Scale: 1 inch = 4 feet.
Wallace S. Carson, County Engineer.
Fredrick A. Leavitt CHAIRMAN.



Bench Mark~
USCGS and State Survey Bound No J 13
Located in South Braintree in the south
Step Buttress of the Northwest side entrance
to St. Francis of Assisi Catholic Church along
Washington St. about 3 feet above Pavement
level. Elev. = 119.81

B.M.~
Right outer corner bottom Conc. Step
Sta. 0+86; 31.5 ft. left. Elev. = 112.22

B.M.~
Left outer corner bottom Conc. Step
at House No 34. Sta. 2+13; 49 ft. Left.
Elev. = 110.95

B.M.~
Left outer corner bottom Conc. Step
to Adels Cafe. Sta. 2+83; 33 ft. left.
Elev. = 107.81

CRIF. ORDER RELOCATION BK. 2971 PG. 149 DEC. 20. 1950
TKG. BK. 2965 PG. 170; PL. BK. 160 PLS. 1431, 1432 & 1433 REC. NOV. 27, 1950