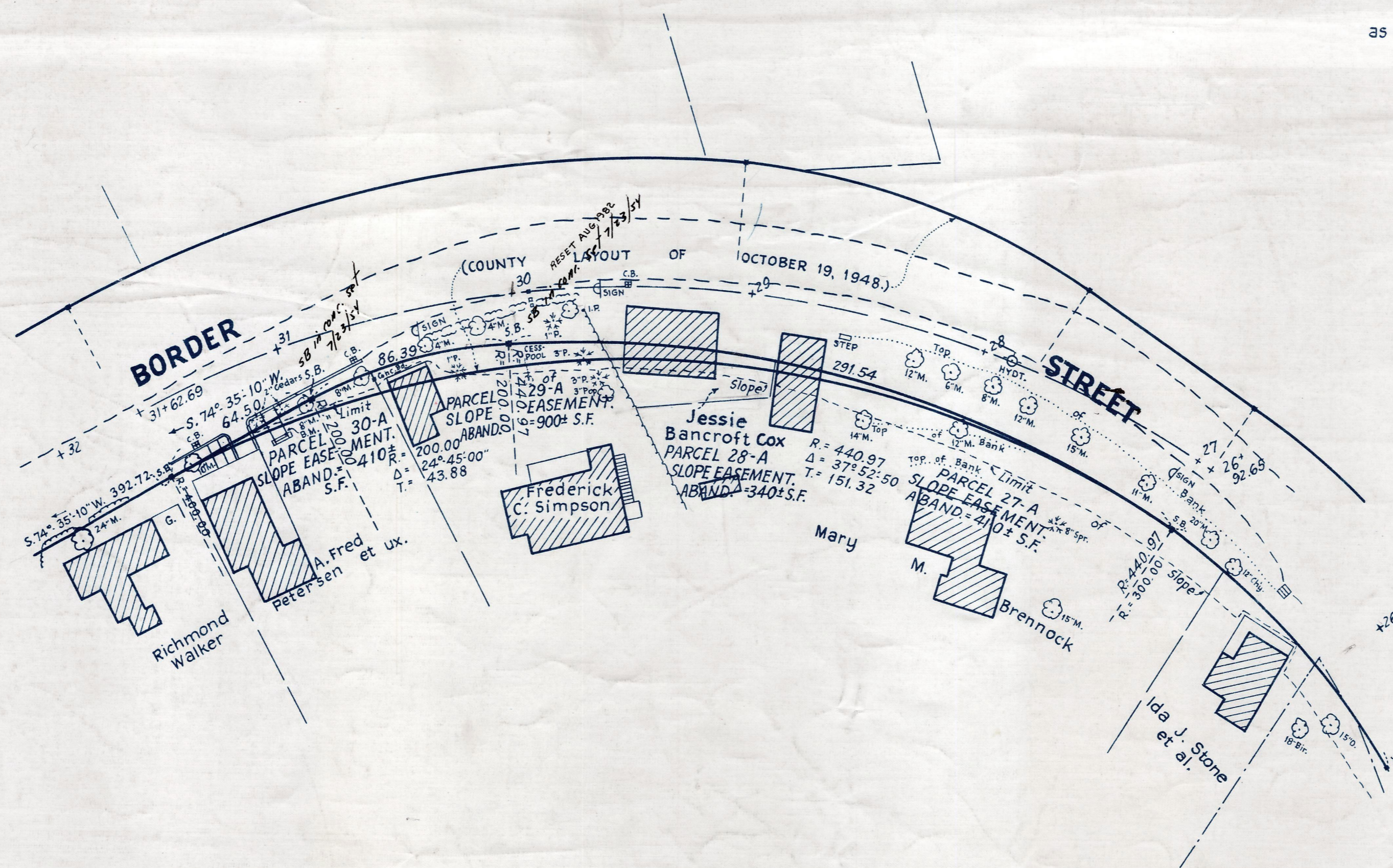
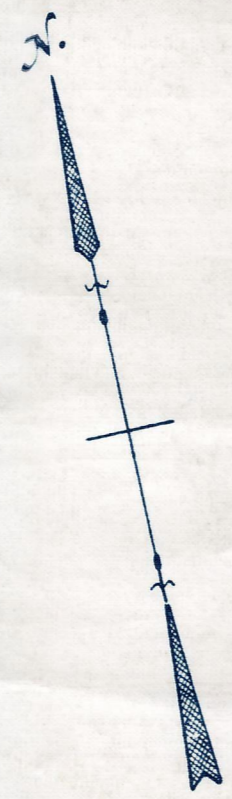
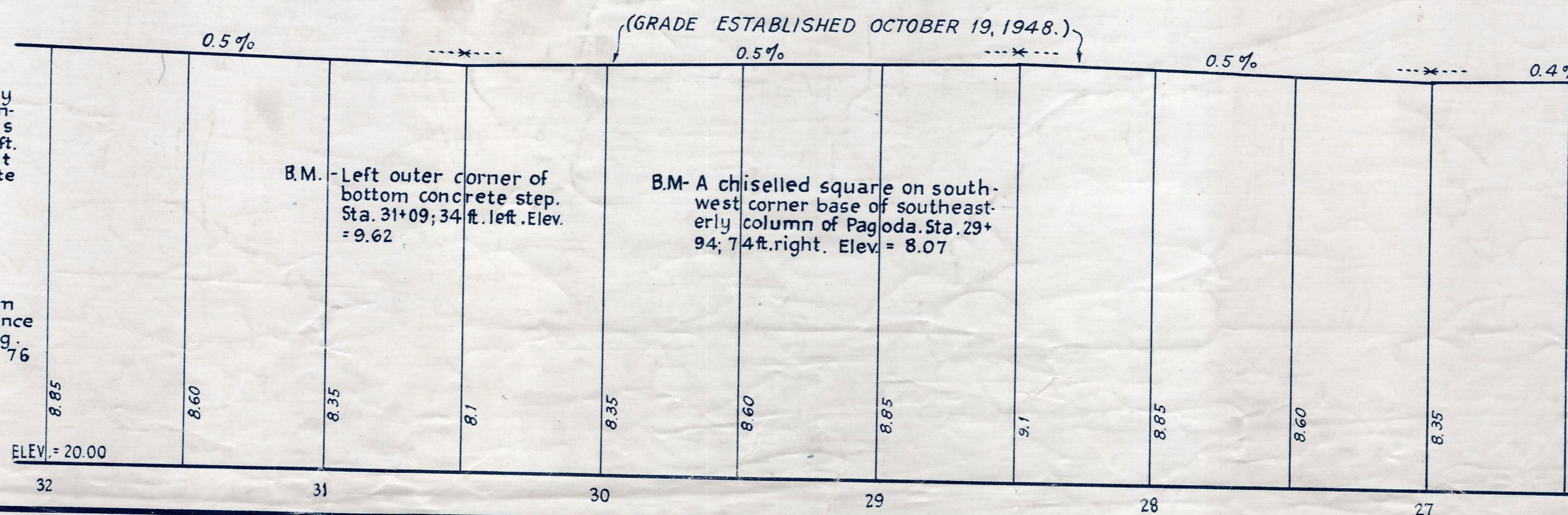


Plan showing the Relocation  
of a Portion of  
**BORDER STREET, COHASSET**  
on the southerly side  
between  
STATION 26+92.65 AND STATION 31+62.69  
as made by the Norfolk County Commissioners  
by Return dated August 22, 1950.  
Horizontal Scale: 1 inch = 40 feet.  
Vertical Scale: 1 inch = 8 feet.  
Wallace S. Carson, County Engineer.  
*Frederick A. Leavitt*, CHAIRMAN



Bench Mark:--  
U.S.C. & Geodetic Survey and State Survey  
T.B.M. No. 3079. Located in the south-  
east angle of the N.Y. N.H. & H.R.R. Trails  
south of the Pleasant St. crossing; 138 ft.  
southeast of a switch stand; 48 ft. east  
of the east rail. An Iron Bolt in concrete  
block. Elev. = 13.24

B.M. - Right outer corner of bottom  
concrete step to front entrance  
of American Legion Building,  
Sta. 37+19; 58 ft. left. Elev. = 9.76



B.M. - Left outer corner of  
bottom concrete step.  
Sta. 31+09; 34 ft. left. Elev. = 9.62

B.M. - A chiselled square on south-  
west corner base of southeast-  
erly column of Pagoda. Sta. 29+  
94; 7.4 ft. right. Elev. = 8.07

COMPLETE