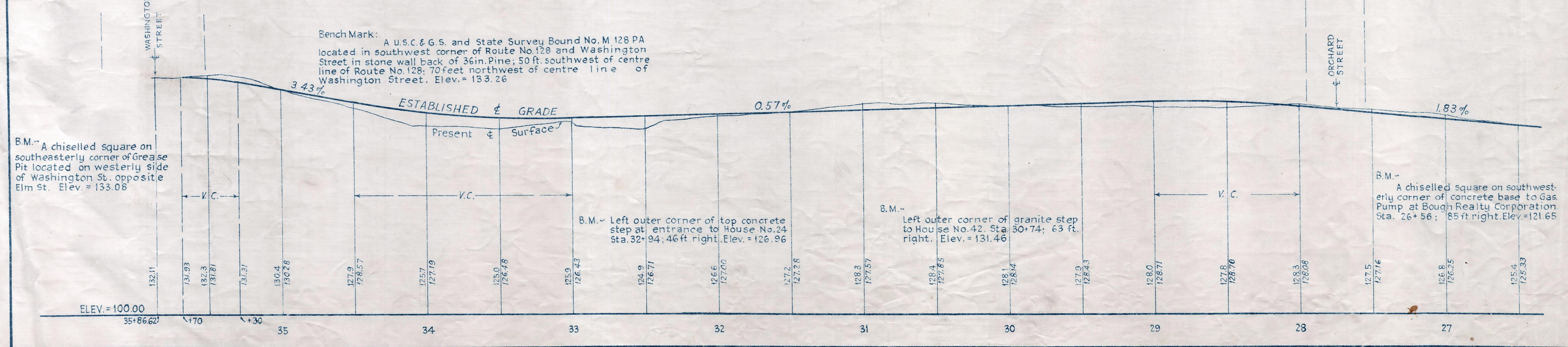
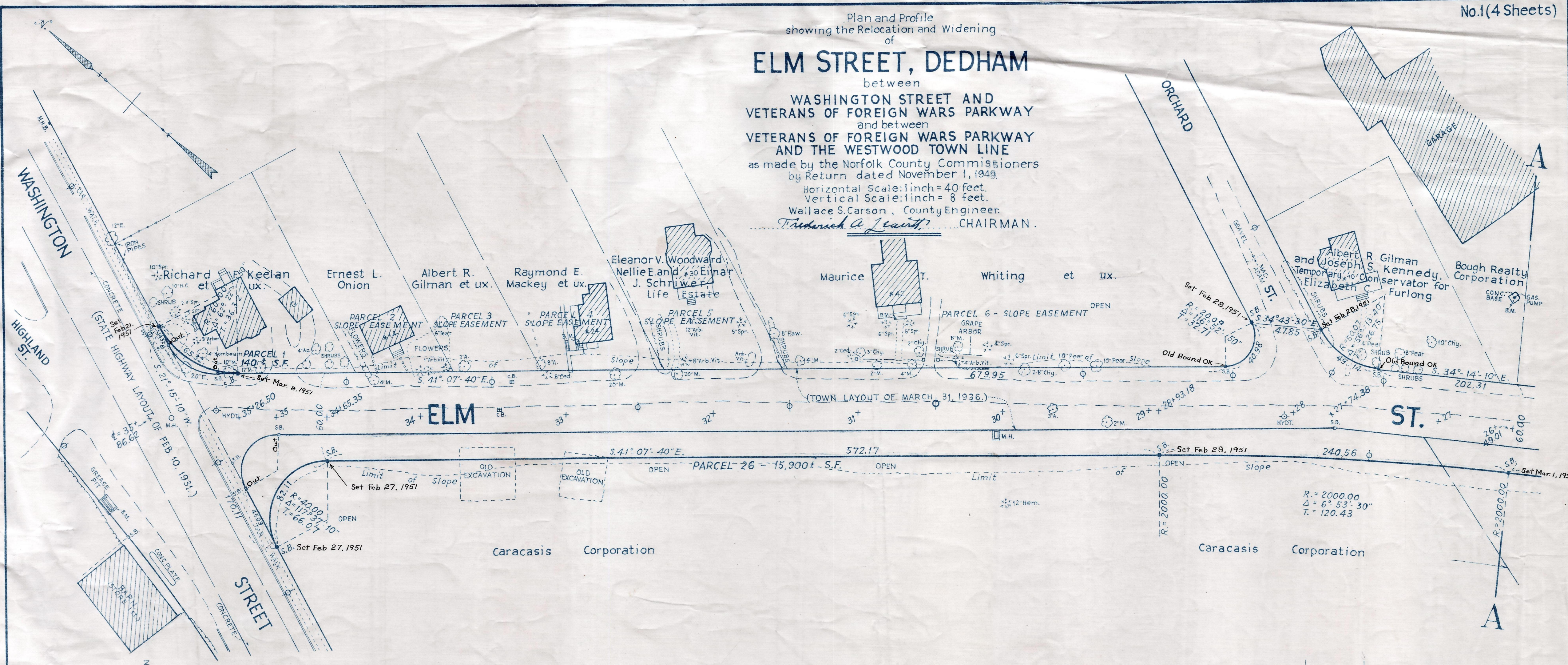


Plan and Profile  
showing the Relocation and Widening  
of  
**ELM STREET, DEDHAM**  
between  
WASHINGTON STREET AND  
VETERANS OF FOREIGN WARS PARKWAY  
and between  
VETERANS OF FOREIGN WARS PARKWAY  
AND THE WESTWOOD TOWN LINE  
as made by the Norfolk County Commissioners  
by Return dated November 1, 1949.  
Horizontal Scale: 1 inch = 40 feet.  
Vertical Scale: 1 inch = 8 feet.  
Wallace S. Carson, County Engineer.  
*Fredrick A. Leavitt*, CHAIRMAN.



CRF. ORDER RELOCATION BK. 2891 PG. 418 FEB. 16, 1950  
TKG. BK. 2871 PG. 287; PL. BK. 154, PLS. 1181 TO 1184 INCL. REC. NOV. 17, 1949

Date of Entry Feb. 8, 1950.